



[Go to Product page](#)

Datasheet for ABIN7157298  
**anti-KLHL38 antibody (AA 1-200)**

2 Images

Overview

Quantity:	100 µg
Target:	KLHL38
Binding Specificity:	AA 1-200
Reactivity:	Human
Host:	Rabbit
Clonality:	Polyclonal
Conjugate:	This KLHL38 antibody is un-conjugated
Application:	ELISA, Immunohistochemistry (IHC)

Product Details

Immunogen:	Recombinant Human Kelch-like protein 38 protein (1-200AA)
Isotype:	IgG
Cross-Reactivity:	Human
Purification:	>95%, Protein G purified

Target Details

Target:	KLHL38
Alternative Name:	KLHL38 ( <a href="#">KLHL38 Products</a> )
Background:	Background: Cul3-RING ubiquitin ligase complex, protein ubiquitination Aliases: KLHL38 antibody, C8orfK36Kelch-like protein 38 antibody

## Target Details

---

UniProt: [Q2WGJ6](#)

## Application Details

---

Application Notes: Recommended dilution: IHC:1:20-1:200,

Restrictions: For Research Use only

## Handling

---

Format: Liquid

Buffer: Preservative: 0.03 % Proclin 300  
Constituents: 50 % Glycerol, 0.01M PBS, PH 7.4

Preservative: ProClin

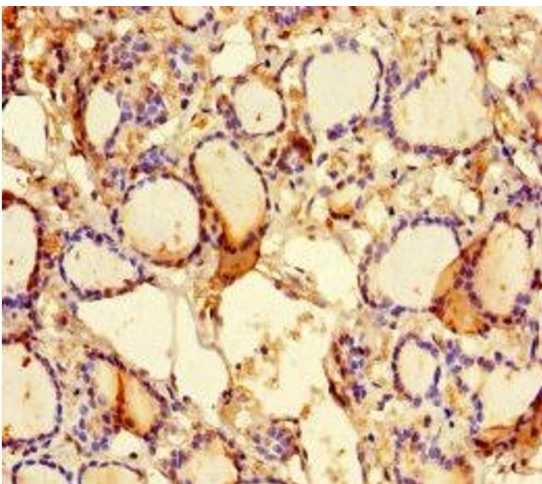
Precaution of Use: This product contains ProClin: a POISONOUS AND HAZARDOUS SUBSTANCE which should be handled by trained staff only.

Storage: -20 °C,-80 °C

Storage Comment: Upon receipt, store at -20°C or -80°C. Avoid repeated freeze.

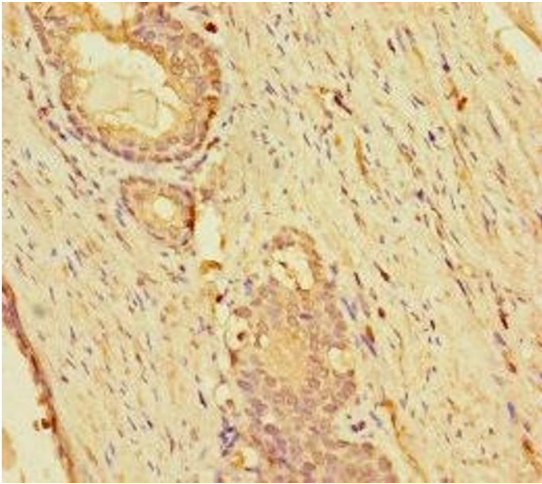
## Images

---



### Immunohistochemistry

**Image 1.** Immunohistochemistry of paraffin-embedded human thyroid tissue using ABIN7157298 at dilution of 1:100



### Immunohistochemistry

**Image 2.** Immunohistochemistry of paraffin-embedded human prostate cancer using ABIN7157298 at dilution of 1:100