

Datasheet for ABIN7157356  
**anti-KRTAP8-1 antibody (AA 1-63)**[Go to Product page](#)

## 1 Image

## Overview

Quantity:	100 µg
Target:	KRTAP8-1
Binding Specificity:	AA 1-63
Reactivity:	Human
Host:	Rabbit
Clonality:	Polyclonal
Conjugate:	This KRTAP8-1 antibody is un-conjugated
Application:	ELISA, Immunohistochemistry (IHC)

## Product Details

Immunogen:	Recombinant Human Keratin-associated protein 8-1 protein (1-63AA)
Isotype:	IgG
Cross-Reactivity:	Human
Purification:	>95%, Protein G purified

## Target Details

Target:	KRTAP8-1
Alternative Name:	KRTAP8-1 ( <a href="#">KRTAP8-1 Products</a> )
Background:	Background: In the hair cortex, hair keratin intermediate filaments are embedded in an interfilamentous matrix, consisting of hair keratin-associated proteins (KRTAP), which are

## Target Details

essential for the formation of a rigid and resistant hair shaft through their extensive disulfide bond cross-linking with abundant cysteine residues of hair keratins. The matrix proteins include the high-sulfur and high-glycine-tyrosine keratins.

Aliases: KRTAP8-1 antibody, KAP8.1 antibody, KRTAP8.1Keratin-associated protein 8-1 antibody, High glycine-tyrosine keratin-associated protein 8.1 antibody

UniProt: [Q8IUC2](#)

## Application Details

Application Notes: Recommended dilution: IHC:1:20-1:200,

Restrictions: For Research Use only

## Handling

Format: Liquid

Buffer: Preservative: 0.03 % Proclin 300  
Constituents: 50 % Glycerol, 0.01M PBS, PH 7.4

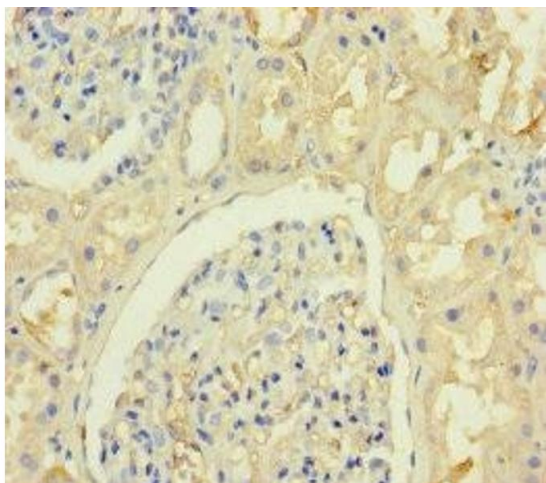
Preservative: ProClin

Precaution of Use: This product contains ProClin: a POISONOUS AND HAZARDOUS SUBSTANCE which should be handled by trained staff only.

Storage: -20 °C,-80 °C

Storage Comment: Upon receipt, store at -20°C or -80°C. Avoid repeated freeze.

## Images



### Immunohistochemistry

**Image 1.** Immunohistochemistry of paraffin-embedded human kidney tissue using ABIN7157356 at dilution of 1:100