



[Go to Product page](#)

Datasheet for ABIN7157376
anti-KRT12 antibody (AA 1-178)

1 Image

Overview

Quantity:	100 µL
Target:	KRT12
Binding Specificity:	AA 1-178
Reactivity:	Human
Host:	Rabbit
Clonality:	Polyclonal
Conjugate:	This KRT12 antibody is un-conjugated
Application:	ELISA, Immunofluorescence (IF)

Product Details

Immunogen:	Recombinant Human Keratin, type I cytoskeletal 12 protein (1-178AA)
Isotype:	IgG
Cross-Reactivity:	Human
Purification:	>95%, Protein G purified

Target Details

Target:	KRT12
Alternative Name:	KRT12 (KRT12 Products)
Background:	Background: May play a unique role in maintaining the normal corneal epithelial function. Together with KRT3, essential for the maintenance of corneal epithelium integrity (By

Target Details

similarity).

Aliases: CK-12 antibody, Cytokeratin-12 antibody, K12 antibody, K1C12_HUMAN antibody, Keratin 12 antibody, Keratin antibody, Keratin, type I cytoskeletal 12 antibody, Keratin-12 antibody, KRT12 antibody, type I cytoskeletal 12 antibody

UniProt: [Q99456](#)

Application Details

Application Notes: Recommended dilution: IF:1:50-1:200,

Restrictions: For Research Use only

Handling

Format: Liquid

Buffer: Preservative: 0.03 % Proclin 300
Constituents: 50 % Glycerol, 0.01M PBS, pH 7.4

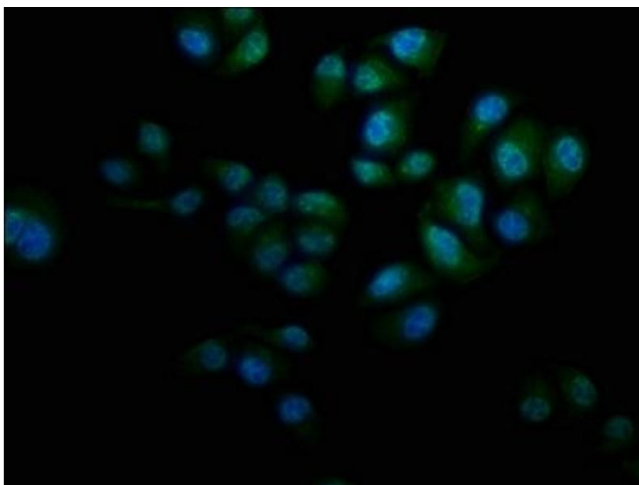
Preservative: ProClin

Precaution of Use: This product contains ProClin: a POISONOUS AND HAZARDOUS SUBSTANCE which should be handled by trained staff only.

Storage: -20 °C,-80 °C

Storage Comment: Upon receipt, store at -20°C or -80°C. Avoid repeated freeze.

Images



Immunofluorescence

Image 1. Immunofluorescence staining of HeLa cells with ABIN7157376 at 1:133, counter-stained with DAPI. The cells were fixed in 4 % formaldehyde, permeabilized using 0.2 % Triton X-100 and blocked in 10 % normal Goat Serum. The cells were then incubated with the antibody overnight at 4 °C. The secondary antibody was Alexa Fluor 488-conjugated AffiniPure Goat Anti-Rabbit IgG(H+L).