

Datasheet for ABIN7157388
anti-KRT16 antibody (AA 265-333)[Go to Product page](#)

4 Images

Overview

Quantity:	100 µg
Target:	KRT16
Binding Specificity:	AA 265-333
Reactivity:	Human
Host:	Rabbit
Clonality:	Polyclonal
Conjugate:	This KRT16 antibody is un-conjugated
Application:	Western Blotting (WB), Immunohistochemistry (IHC), ELISA, Immunofluorescence (IF)

Product Details

Immunogen:	Recombinant Human Keratin, type I cytoskeletal 16 protein (265-333AA)
Isotype:	IgG
Cross-Reactivity:	Human
Purification:	>95%, Protein G purified

Target Details

Target:	KRT16
Alternative Name:	KRT16 (KRT16 Products)
Background:	Background: Epidermis-specific type I keratin that plays a key role in skin. Acts as a regulator of innate immunity in response to skin barrier breach: required for some inflammatory checkpoint

Target Details

for the skin barrier maintenance.

Aliases: CK 16 antibody, CK-16 antibody, CK16 antibody, Cytokeratin 16 antibody, Cytokeratin-16 antibody, Cytokeratin16 antibody, FNEPPK antibody, Focal non epidermolytic palmoplantar keratoderma antibody, K 16 antibody, K16 antibody, K1C16_HUMAN antibody, K1CP antibody, Keratin 1 type I antibody, Keratin 16 antibody, Keratin antibody, Keratin type I cytoskeletal 16 antibody, Keratin-16 antibody, Keratin16 antibody, KRT 16 antibody, Krt16 antibody, KRT16A antibody, NEPPK antibody, PC1 antibody, type I cytoskeletal 16 antibody

UniProt: [P08779](#)

Application Details

Application Notes: Recommended dilution: WB:1:500-1:5000, IHC:1:200-1:500, IF:1:50-1:200,

Restrictions: For Research Use only

Handling

Format: Liquid

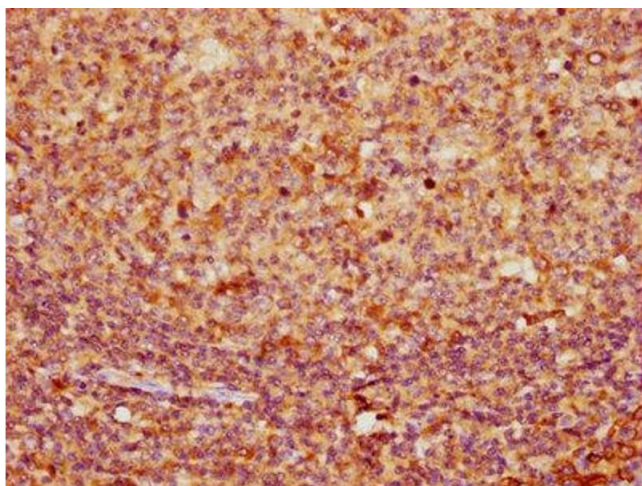
Buffer: Preservative: 0.03 % Proclin 300
Constituents: 50 % Glycerol, 0.01M PBS, pH 7.4

Preservative: ProClin

Precaution of Use: This product contains ProClin: a POISONOUS AND HAZARDOUS SUBSTANCE which should be handled by trained staff only.

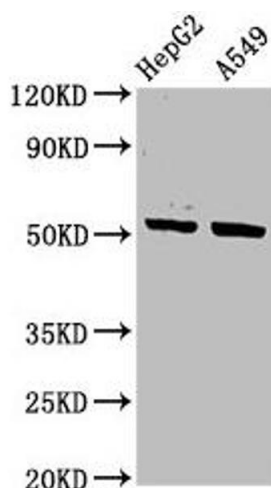
Storage: -20 °C, -80 °C

Storage Comment: Upon receipt, store at -20°C or -80°C. Avoid repeated freeze.



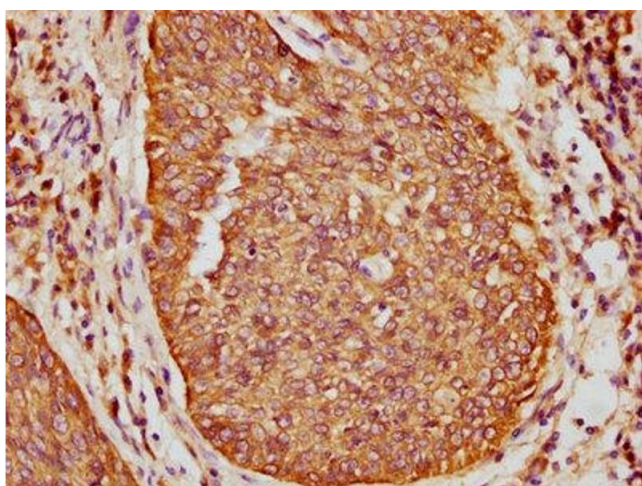
Immunohistochemistry

Image 1. IHC image of ABIN7157388 diluted at 1:400 and staining in paraffin-embedded human tonsil tissue performed on a Leica Bond™ system. After dewaxing and hydration, antigen retrieval was mediated by high pressure in a citrate buffer (pH 6.0). Section was blocked with 10 % normal goat serum 30 min at RT. Then primary antibody (1 % BSA) was incubated at 4 °C overnight. The primary is detected by a biotinylated secondary antibody and visualized using an HRP conjugated SP system.



Western Blotting

Image 2. Western Blot Positive WB detected in: HepG2 whole cell lysate, A549 whole cell lysate All lanes: KRT16 antibody at 3.4 µg/mL Secondary Goat polyclonal to rabbit IgG at 1/50000 dilution Predicted band size: 52 kDa Observed band size: 52 kDa



Immunohistochemistry

Image 3. IHC image of ABIN7157388 diluted at 1:400 and staining in paraffin-embedded human cervical cancer performed on a Leica Bond™ system. After dewaxing and hydration, antigen retrieval was mediated by high pressure in a citrate buffer (pH 6.0). Section was blocked with 10 % normal goat serum 30 min at RT. Then primary antibody (1 % BSA) was incubated at 4 °C overnight. The primary is detected by a biotinylated secondary antibody and visualized using an HRP conjugated SP system.

Please check the [product details page](#) for more images. Overall 4 images are available for ABIN7157388.