



Datasheet for ABIN7157400  
**anti-Keratin 2 antibody (AA 207-424)**



[Go to Product page](#)

3 Images

Overview

Quantity:	100 µL
Target:	Keratin 2 (KRT2)
Binding Specificity:	AA 207-424
Reactivity:	Human
Host:	Rabbit
Clonality:	Polyclonal
Conjugate:	This Keratin 2 antibody is un-conjugated
Application:	Western Blotting (WB), Immunohistochemistry (IHC), ELISA, Immunofluorescence (IF)

Product Details

Immunogen:	Recombinant Human Keratin, type I cytoskeletal 20 protein (207-424AA)
Isotype:	IgG
Cross-Reactivity:	Human
Purification:	>95%, Protein G purified

Target Details

Target:	Keratin 2 (KRT2)
Alternative Name:	KRT2 ( <a href="#">KRT2 Products</a> )
Background:	Background: Plays a significant role in maintaining keratin filament organization in intestinal epithelia. When phosphorylated, plays a role in the secretion of mucin in the small intestine (By

## Target Details

---

similarity).

Aliases: CD20 antibody, CK 20 antibody, CK-20 antibody, CK20 antibody, Cytokeratin-20 antibody, Cytokeratin20 antibody, K1C20\_HUMAN antibody, K20 antibody, KA20 antibody, Keratin 20 antibody, keratin 20, type I antibody, keratin 21, rat, homolog of antibody, Keratin antibody, Keratin type I cytoskeletal 20 antibody, Keratin-20 antibody, Keratin20 antibody, KRT 20 antibody, KRT 21 antibody, KRT20 antibody, KRT21 antibody, MGC35423 antibody, OTTHUMP00000164518 antibody, Protein IT antibody, type I cytoskeletal 20 antibody

UniProt: [P35900](#)

## Application Details

---

Application Notes: Recommended dilution: WB:1:1000-1:5000, IHC:1:200-1:500, IF:1:50-1:200,

Restrictions: For Research Use only

## Handling

---

Format: Liquid

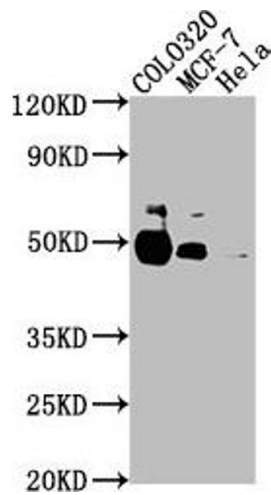
Buffer: Preservative: 0.03 % Proclin 300  
Constituents: 50 % Glycerol, 0.01M PBS, pH 7.4

Preservative: ProClin

Precaution of Use: This product contains ProClin: a POISONOUS AND HAZARDOUS SUBSTANCE which should be handled by trained staff only.

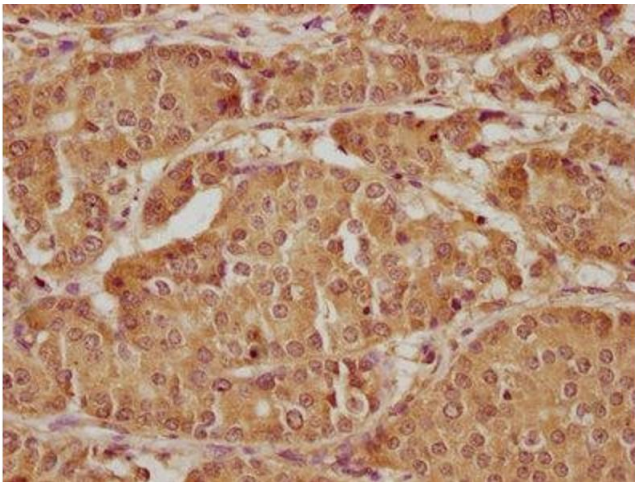
Storage: -20 °C,-80 °C

Storage Comment: Upon receipt, store at -20°C or -80°C. Avoid repeated freeze.



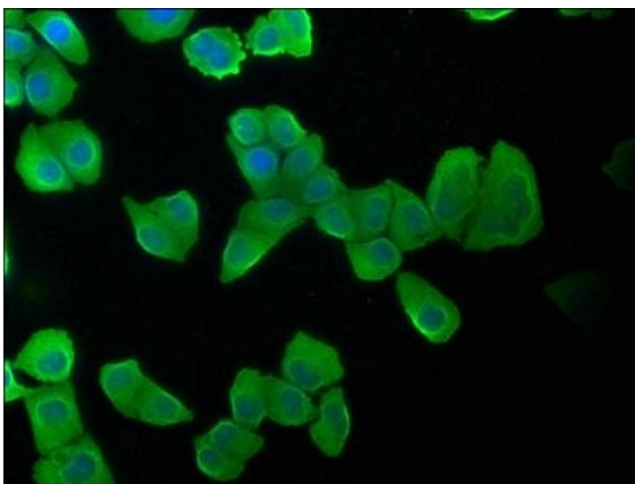
### Western Blotting

**Image 1.** Western Blot Positive WB detected in: COLO320 whole cell lysate, MCF-7 whole cell lysate, HeLa whole cell lysate All lanes: KRT20 antibody at 1:2000 Secondary Goat polyclonal to rabbit IgG at 1/50000 dilution Predicted band size: 49 kDa Observed band size: 49 kDa



### Immunohistochemistry

**Image 2.** IHC image of ABIN7157400 diluted at 1:300 and staining in paraffin-embedded human gastric cancer performed on a Leica Bond™ system. After dewaxing and hydration, antigen retrieval was mediated by high pressure in a citrate buffer (pH 6.0). Section was blocked with 10 % normal goat serum 30 min at RT. Then primary antibody (1 % BSA) was incubated at 4 °C overnight. The primary is detected by a biotinylated secondary antibody and visualized using an HRP conjugated SP system.



### Immunofluorescence

**Image 3.** Immunofluorescence staining of HeLa cells with ABIN7157400 at 1:100, counter-stained with DAPI. The cells were fixed in 4 % formaldehyde, permeabilized using 0.2 % Triton X-100 and blocked in 10 % normal Goat Serum. The cells were then incubated with the antibody overnight at 4 °C. The secondary antibody was Alexa Fluor 488-conjugated AffiniPure Goat Anti-Rabbit IgG(H+L).