



[Go to Product page](#)

Datasheet for ABIN7157412

anti-Cytokeratin 1 antibody (AA 267-438)

3 Images

Overview

Quantity:	100 µg
Target:	Cytokeratin 1 (KRT1)
Binding Specificity:	AA 267-438
Reactivity:	Human
Host:	Rabbit
Clonality:	Polyclonal
Conjugate:	This Cytokeratin 1 antibody is un-conjugated
Application:	Immunohistochemistry (IHC), ELISA, Immunofluorescence (IF)

Product Details

Immunogen:	Recombinant Human Keratin, type II cytoskeletal 1 protein (267-438AA)
Isotype:	IgG
Cross-Reactivity:	Human
Purification:	>95%, Protein G purified

Target Details

Target:	Cytokeratin 1 (KRT1)
Alternative Name:	KRT1 (KRT1 Products)
Background:	Background: May regulate the activity of kinases such as PKC and SRC via binding to integrin beta-1 (ITB1) and the receptor of activated protein C kinase 1 (RACK1). In complex with C1QBP

Target Details

is a high affinity receptor for kininogen-1/HMWK.

Aliases: 67 kDa cytokeratin antibody, CK-1 antibody, CK1 antibody, Cytokeratin-1 antibody, Cytokeratin1 antibody, EHK antibody, EHK1 antibody, Epidermolytic hyperkeratosis 1 antibody, EPPK antibody, Hair alpha protein antibody, K1 antibody, K2C1_HUMAN antibody, Keratin antibody, Keratin type II cytoskeletal 1 antibody, Keratin-1 antibody, Keratin1 antibody, KRT 1 antibody, Krt1 antibody, KRT1A antibody, NEPPK antibody, type II cytoskeletal 1 antibody, Type II keratin Kb1 antibody, Type-II keratin Kb1 antibody

UniProt: [P04264](#)

Application Details

Application Notes: Recommended dilution: IHC:1:200-1:500, IF:1:50-1:200,

Restrictions: For Research Use only

Handling

Format: Liquid

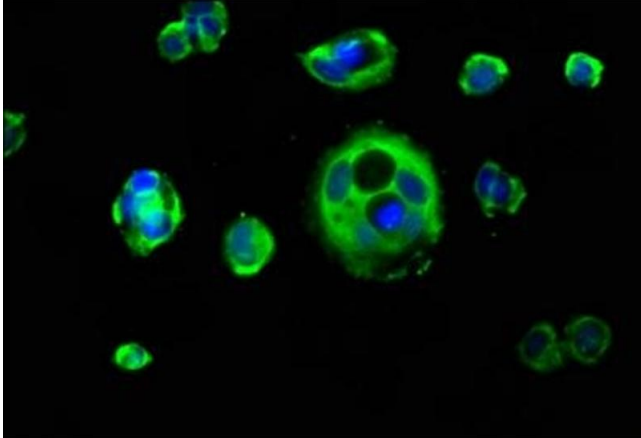
Buffer: Preservative: 0.03 % Proclin 300
Constituents: 50 % Glycerol, 0.01M PBS, pH 7.4

Preservative: ProClin

Precaution of Use: This product contains ProClin: a POISONOUS AND HAZARDOUS SUBSTANCE which should be handled by trained staff only.

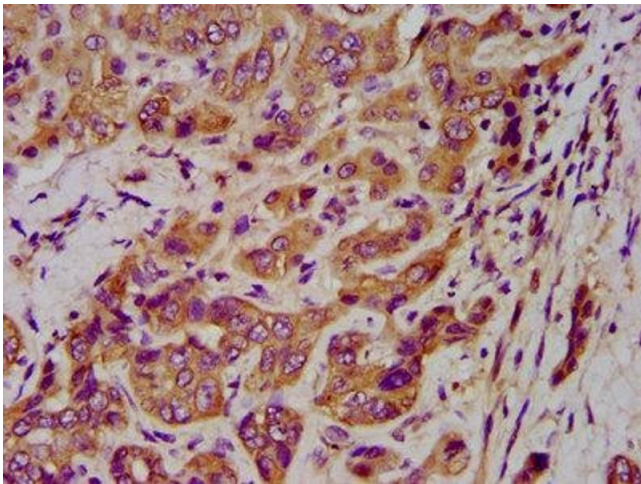
Storage: -20 °C,-80 °C

Storage Comment: Upon receipt, store at -20°C or -80°C. Avoid repeated freeze.



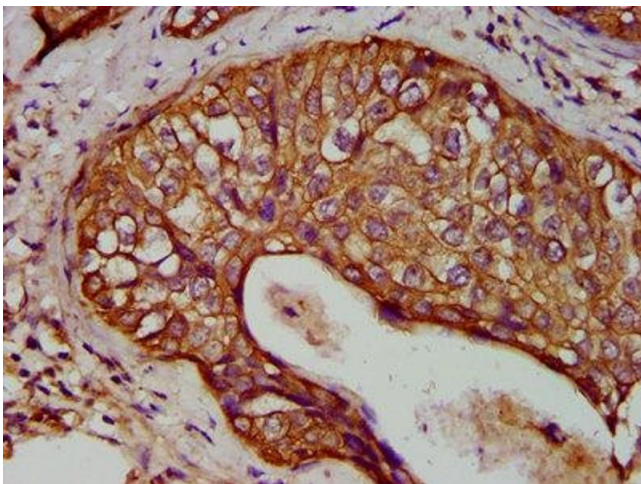
Immunofluorescence

Image 1. Immunofluorescence staining of MCF-7 cells with ABIN7157412 at 1:133, counter-stained with DAPI. The cells were fixed in 4% formaldehyde, permeabilized using 0.2% Triton X-100 and blocked in 10% normal Goat Serum. The cells were then incubated with the antibody overnight at 4°C. The secondary antibody was Alexa Fluor 488-conjugated AffiniPure Goat Anti-Rabbit IgG(H+L).



Immunohistochemistry

Image 2. IHC image of ABIN7157412 diluted at 1:400 and staining in paraffin-embedded human liver cancer performed on a Leica Bond™ system. After dewaxing and hydration, antigen retrieval was mediated by high pressure in a citrate buffer (pH 6.0). Section was blocked with 10% normal goat serum 30min at RT. Then primary antibody (1% BSA) was incubated at 4°C overnight. The primary is detected by a biotinylated secondary antibody and visualized using an HRP conjugated SP system.



Immunohistochemistry

Image 3. IHC image of ABIN7157412 diluted at 1:400 and staining in paraffin-embedded human cervical cancer performed on a Leica Bond™ system. After dewaxing and hydration, antigen retrieval was mediated by high pressure in a citrate buffer (pH 6.0). Section was blocked with 10% normal goat serum 30min at RT. Then primary antibody (1% BSA) was incubated at 4°C overnight. The primary is detected by a biotinylated secondary antibody and visualized using an HRP conjugated SP system.