

Datasheet for ABIN7157420
anti-Cytokeratin 2 antibody (AA 173-283)[Go to Product page](#)

3 Images

Overview

| | |
|----------------------|---|
| Quantity: | 100 µg |
| Target: | Cytokeratin 2 (KRT76) |
| Binding Specificity: | AA 173-283 |
| Reactivity: | Human |
| Host: | Rabbit |
| Clonality: | Polyclonal |
| Conjugate: | This Cytokeratin 2 antibody is un-conjugated |
| Application: | Western Blotting (WB), Immunohistochemistry (IHC), Immunofluorescence (IF), ELISA |

Product Details

| | |
|-------------------|--|
| Immunogen: | Recombinant Human Keratin, type II cytoskeletal 2 oral protein (173-283AA) |
| Isotype: | IgG |
| Cross-Reactivity: | Human |
| Purification: | >95%, Protein G purified |

Target Details

| | |
|-------------------|--|
| Target: | Cytokeratin 2 (KRT76) |
| Alternative Name: | KRT76 (KRT76 Products) |
| Background: | Background: Probably contributes to terminal cornification. Aliases: CK 2P antibody, CK-2P antibody, CK2P antibody, Cytokeratin 2P antibody, Cytokeratin- |

Target Details

2P antibody, Cytokeratin2 antibody, Cytokeratin2P antibody, HUMCYT 2A antibody, HUMCYT2A antibody, K22O_HUMAN antibody, K2P antibody, K76 antibody, KB9 antibody, Keratin 2p antibody, Keratin 76 antibody, Keratin 76, type II antibody, Keratin antibody, Keratin type II cytoskeletal 2 oral antibody, Keratin-76 antibody, Keratin2p antibody, Keratin76 antibody, KRT 2B antibody, KRT 2P antibody, KRT 76 antibody, KRT2B antibody, KRT2P antibody, KRT76 antibody, type II cytoskeletal 2 oral antibody, Type-II keratin Kb9 antibody

UniProt: [Q01546](#)

Application Details

Application Notes: Recommended dilution: WB:1:500-1:5000, IHC:1:200-1:500, IF:1:50-1:200,

Restrictions: For Research Use only

Handling

Format: Liquid

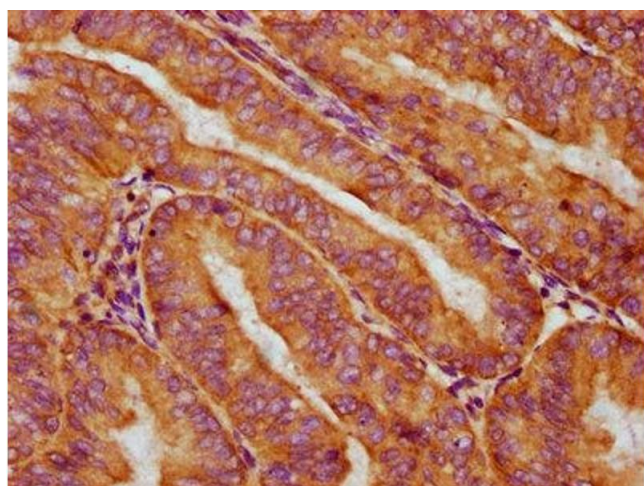
Buffer: Preservative: 0.03 % Proclin 300
Constituents: 50 % Glycerol, 0.01M PBS, pH 7.4

Preservative: ProClin

Precaution of Use: This product contains ProClin: a POISONOUS AND HAZARDOUS SUBSTANCE which should be handled by trained staff only.

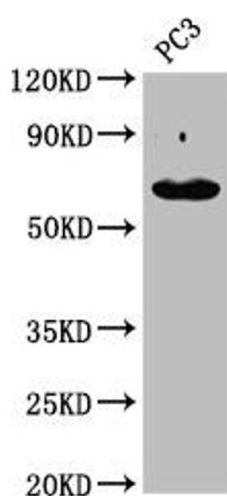
Storage: -20 °C, -80 °C

Storage Comment: Upon receipt, store at -20°C or -80°C. Avoid repeated freeze.



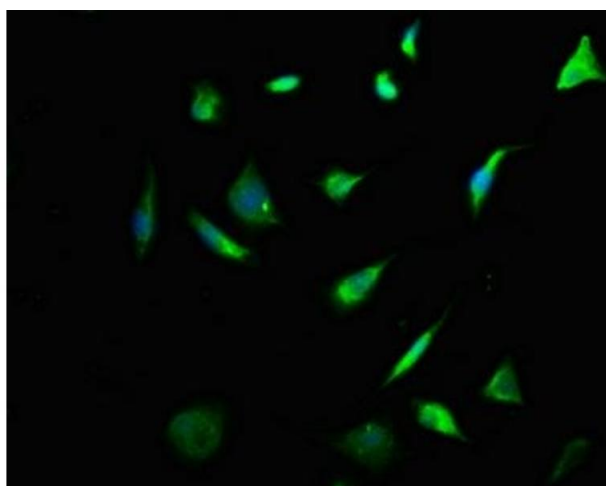
Immunohistochemistry

Image 1. IHC image of ABIN7157420 diluted at 1:400 and staining in paraffin-embedded human endometrial cancer performed on a Leica Bond™ system. After dewaxing and hydration, antigen retrieval was mediated by high pressure in a citrate buffer (pH 6.0). Section was blocked with 10% normal goat serum 30min at RT. Then primary antibody (1% BSA) was incubated at 4°C overnight. The primary is detected by a biotinylated secondary antibody and visualized using an HRP conjugated SP system.



Western Blotting

Image 2. Western Blot Positive WB detected in: PC-3 whole cell lysate All lanes: KRT76 antibody at 4.9 µg/mL Secondary Goat polyclonal to rabbit IgG at 1/50000 dilution Predicted band size: 66 kDa Observed band size: 66 kDa



Immunofluorescence

Image 3. Immunofluorescence staining of SH-SY5Y cells with ABIN7157420 at 1:133, counter-stained with DAPI. The cells were fixed in 4% formaldehyde, permeabilized using 0.2% Triton X-100 and blocked in 10% normal Goat Serum. The cells were then incubated with the antibody overnight at 4°C. The secondary antibody was Alexa Fluor 488-conjugated AffiniPure Goat Anti-Rabbit IgG(H+L).