



Datasheet for ABIN7157440
anti-KRT6A antibody (AA 305-564)



[Go to Product page](#)

2 Images

Overview

Quantity:	100 µL
Target:	KRT6A
Binding Specificity:	AA 305-564
Reactivity:	Human
Host:	Rabbit
Clonality:	Polyclonal
Conjugate:	This KRT6A antibody is un-conjugated
Application:	Western Blotting (WB), ELISA, Immunohistochemistry (IHC)

Product Details

Immunogen:	Recombinant Human Keratin, type II cytoskeletal 6A protein (305-564AA)
Isotype:	IgG
Cross-Reactivity:	Human, Mouse
Purification:	Antigen Affinity Purified

Target Details

Target:	KRT6A
Alternative Name:	KRT6A (KRT6A Products)
Background:	Background: Epidermis-specific type I keratin involved in wound healing. Involved in the activation of follicular keratinocytes after wounding, while it does not play a major role in

Target Details

keratinocyte proliferation or migration. Participates in the regulation of epithelial migration by inhibiting the activity of SRC during wound repair.

Aliases: CK-6A antibody, CK-6D antibody, CK6A antibody, CK6C antibody, CK6D antibody, Cytokeratin-6A antibody, Cytokeratin-6D antibody, K2C6A_HUMAN antibody, K6A antibody, K6C antibody, K6D antibody, keratin 6A antibody, Keratin antibody, Keratin, type II cytoskeletal 6A antibody, Keratin-6A antibody, Krt6a antibody, KRT6C antibody, KRT6D antibody, type II cytoskeletal 6A antibody, Type-II keratin Kb6 antibody

UniProt: [P02538](#)

Application Details

Application Notes: Recommended dilution: WB:1:1000-1:5000, IHC:1:20-1:200,

Restrictions: For Research Use only

Handling

Format: Liquid

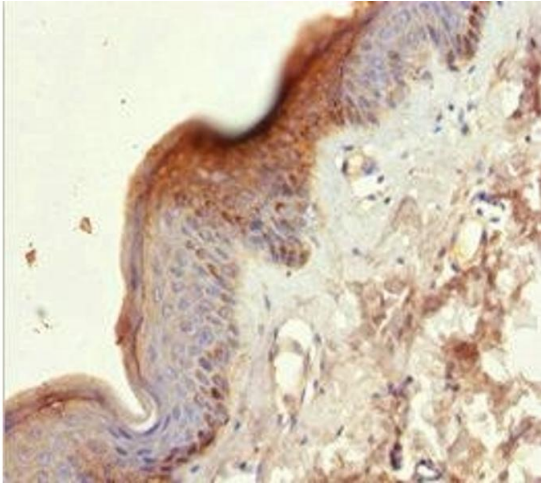
Buffer: PBS with 0.02 % sodium azide, 50 % glycerol, pH 7.3.

Preservative: Sodium azide

Precaution of Use: This product contains Sodium azide: a POISONOUS AND HAZARDOUS SUBSTANCE which should be handled by trained staff only.

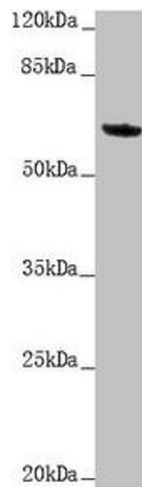
Storage: -20 °C,-80 °C

Storage Comment: Upon receipt, store at -20°C or -80°C. Avoid repeated freeze.



Immunohistochemistry

Image 1. Immunohistochemistry of paraffin-embedded human skin tissue using ABIN7157440 at dilution of 1:100



Western Blotting

Image 2. Western blot All lanes: KRT6A antibody at 5.06 μ g/mL + Mouse lung tissue Secondary Goat polyclonal to rabbit IgG at 1/10000 dilution Predicted band size: 60 kDa
Observed band size: 60 kDa