

Datasheet for ABIN7157495
anti-KIR2DL1 antibody (AA 162-267)[Go to Product page](#)

2 Images

Overview

Quantity:	100 µg
Target:	KIR2DL1
Binding Specificity:	AA 162-267
Reactivity:	Human
Host:	Rabbit
Clonality:	Polyclonal
Conjugate:	This KIR2DL1 antibody is un-conjugated
Application:	ELISA, Immunohistochemistry (IHC), Immunofluorescence (IF)

Product Details

Immunogen:	Recombinant Human Killer cell immunoglobulin-like receptor 2DL1 protein (162-267AA)
Isotype:	IgG
Cross-Reactivity:	Human
Purification:	>95%, Protein G purified

Target Details

Target:	KIR2DL1
Alternative Name:	KIR2DL1 (KIR2DL1 Products)
Background:	Background: Receptor on natural killer (NK) cells for HLA-C alleles. Inhibits the activity of NK cells thus preventing cell lysis.

Target Details

Aliases: KIR2DL1 antibody, CD158A antibody, NKAT1 Killer cell immunoglobulin-like receptor 2DL1 antibody, CD158 antigen-like family member A antibody, MHC class I NK cell receptor antibody, Natural killer-associated transcript 1 antibody, NKAT-1 antibody, p58 natural killer cell receptor clones CL-42/47.11 antibody, p58 NK receptor CL-42/47.11 antibody, p58.1 MHC class-I-specific NK receptor antibody, CD antigen CD158a antibody

UniProt: [P43626](#)

Application Details

Application Notes: Recommended dilution: IHC:1:200-1:500, IF:1:50-1:200,

Restrictions: For Research Use only

Handling

Format: Liquid

Buffer: Preservative: 0.03 % Proclin 300
Constituents: 50 % Glycerol, 0.01M PBS, pH 7.4

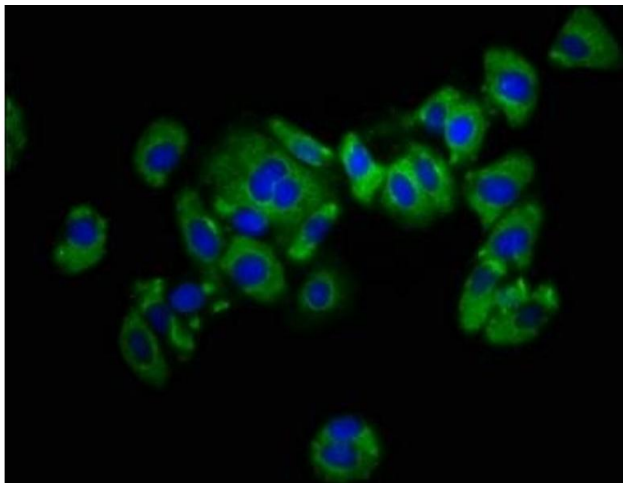
Preservative: ProClin

Precaution of Use: This product contains ProClin: a POISONOUS AND HAZARDOUS SUBSTANCE which should be handled by trained staff only.

Storage: -20 °C, -80 °C

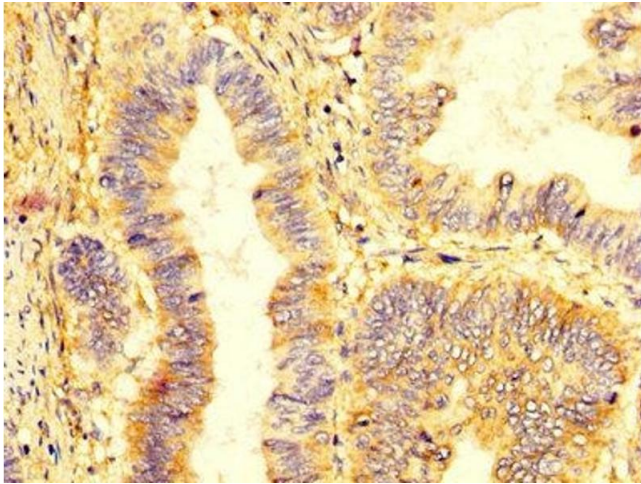
Storage Comment: Upon receipt, store at -20°C or -80°C. Avoid repeated freeze.

Images



Immunofluorescence

Image 1. Immunofluorescence staining of HepG2 cells with ABIN7157495 at 1:133, counter-stained with DAPI. The cells were fixed in 4% formaldehyde, permeabilized using 0.2% Triton X-100 and blocked in 10% normal Goat Serum. The cells were then incubated with the antibody overnight at 4°C. The secondary antibody was Alexa Fluor 488-conjugated AffiniPure Goat Anti-Rabbit IgG(H+L).



Immunohistochemistry

Image 2. IHC image of ABIN7157495 diluted at 1:400 and staining in paraffin-embedded human colon cancer performed on a Leica Bond™ system. After dewaxing and hydration, antigen retrieval was mediated by high pressure in a citrate buffer (pH 6.0). Section was blocked with 10% normal goat serum 30min at RT. Then primary antibody (1% BSA) was incubated at 4°C overnight. The primary is detected by a biotinylated secondary antibody and visualized using an HRP conjugated SP system.