

Datasheet for ABIN7157538
anti-KLRG1 antibody (AA 60-195)[Go to Product page](#)

2 Images

Overview

Quantity:	100 µg
Target:	KLRG1
Binding Specificity:	AA 60-195
Reactivity:	Human
Host:	Rabbit
Clonality:	Polyclonal
Conjugate:	This KLRG1 antibody is un-conjugated
Application:	ELISA, Immunohistochemistry (IHC)

Product Details

Immunogen:	Recombinant Human Killer cell lectin-like receptor subfamily G member 1 protein (60-195AA)
Isotype:	IgG
Cross-Reactivity:	Human
Purification:	>95%, Protein G purified

Target Details

Target:	KLRG1
Alternative Name:	KLRG1 (KLRG1 Products)
Background:	Background: Plays an inhibitory role on natural killer (NK) cells and T-cell functions upon binding to their non-MHC ligands. May mediate missing self recognition by binding to a highly

Target Details

conserved site on classical cadherins, enabling it to monitor expression of E-cadherin/CDH1, N-cadherin/CDH2 and R-cadherin/CDH4 on target cells.

Aliases: 2F1 Ag antibody, 2F1 antibody, C type lectin domain family 15 member A antibody, C-type lectin domain family 15 member A antibody, CLEC15A antibody, ITIM containing receptor MAFA L antibody, ITIM-containing receptor MAFA-L antibody, Killer cell lectin like receptor G1 antibody, Killer cell lectin like receptor subfamily G member 1 antibody, Killer cell lectin-like receptor subfamily G member 1 antibody, KLRG 1 antibody, KLRG1 antibody, KLRG1 protein antibody, KLRG1_HUMAN antibody, MAFA 2F1 antibody, MAFA antibody, MAFA L antibody, MAFA like antibody, MAFA like receptor antibody, MAFA-like receptor antibody, MAFAL antibody, Mast cell function associated antigen (ITIM containing) antibody, Mast cell function associated antigen antibody, Mast cell function-associated antigen 2F1 antibody, Mast cell function-associated antigen antibody, Mast cell function-associated antigen, rat, homolog of antibody, MGC13600 antibody

UniProt: [Q96E93](#)

Application Details

Application Notes: Recommended dilution: IHC:1:20-1:200,

Restrictions: For Research Use only

Handling

Format: Liquid

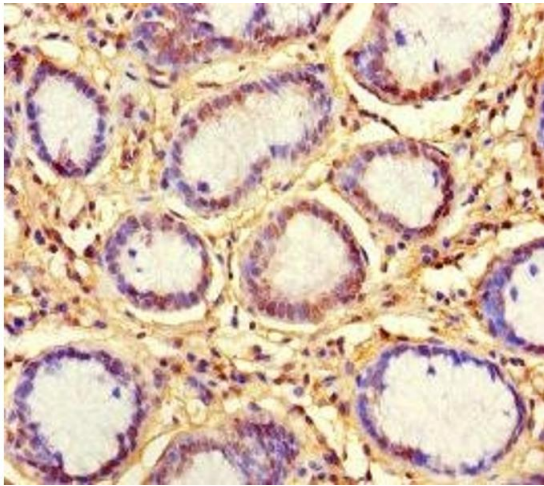
Buffer: Preservative: 0.03 % Proclin 300
Constituents: 50 % Glycerol, 0.01M PBS, PH 7.4

Preservative: ProClin

Precaution of Use: This product contains ProClin: a POISONOUS AND HAZARDOUS SUBSTANCE which should be handled by trained staff only.

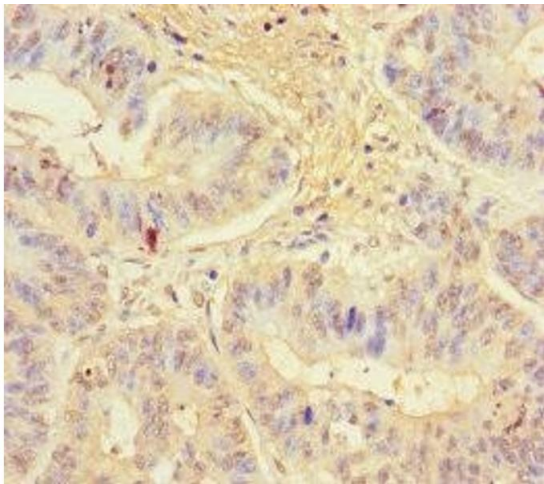
Storage: -20 °C,-80 °C

Storage Comment: Upon receipt, store at -20°C or -80°C. Avoid repeated freeze.



Immunohistochemistry

Image 1. Immunohistochemistry of paraffin-embedded human gastric cancer using ABIN7157538 at dilution of 1:100



Immunohistochemistry

Image 2. Immunohistochemistry of paraffin-embedded human colon cancer using ABIN7157538 at dilution of 1:100