

Datasheet for ABIN7157546  
**anti-KIRREL3 antibody (AA 200-343)**[Go to Product page](#)

## 1 Image

## Overview

Quantity:	100 µg
Target:	KIRREL3
Binding Specificity:	AA 200-343
Reactivity:	Human
Host:	Rabbit
Clonality:	Polyclonal
Conjugate:	This KIRREL3 antibody is un-conjugated
Application:	ELISA, Immunofluorescence (IF)

## Product Details

Immunogen:	Recombinant Human Kin of IRRE-like protein 3 protein (200-343AA)
Isotype:	IgG
Cross-Reactivity:	Human
Purification:	>95%, Protein G purified

## Target Details

Target:	KIRREL3
Alternative Name:	KIRREL3 ( <a href="#">KIRREL3 Products</a> )
Background:	Background: Synaptic adhesion molecule required for the formation of target-specific synapses. Required for formation of target-specific synapses at hippocampal mossy fiber

## Target Details

synapses. Required for formation of mossy fiber filopodia, the synaptic structures connecting dentate granule and GABA neurons. Probably acts as a homophilic adhesion molecule that promotes trans-cellular interactions and stabilize mossy fiber filopodia contact and subsequent synapse formation. Required for the coalescence of vomeronasal sensory neuron axons. May be involved in the hematopoietic supportive capacity of stroma cells, the secreted extracellular domain is directly responsible for supporting hematopoietic stem cells.

Aliases: KIRREL3 antibody, KIAA1867 antibody, NEPH2 antibody, UNQ5923/PRO4502/PRO19814Kin of IRRE-like protein 3 antibody, Kin of irregular chiasm-like protein 3 antibody, Nephrin-like protein 2) [Cleaved into: Processed kin of IRRE-like protein 3] antibody

UniProt: [Q8IZU9](#)

## Application Details

Application Notes: Recommended dilution: IF:1:50-1:200,

Restrictions: For Research Use only

## Handling

Format: Liquid

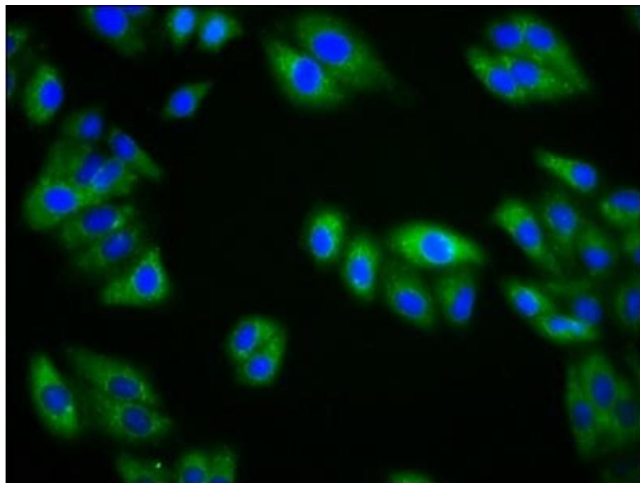
Buffer: Preservative: 0.03 % Proclin 300  
Constituents: 50 % Glycerol, 0.01M PBS, pH 7.4

Preservative: ProClin

Precaution of Use: This product contains ProClin: a POISONOUS AND HAZARDOUS SUBSTANCE which should be handled by trained staff only.

Storage: -20 °C,-80 °C

Storage Comment: Upon receipt, store at -20°C or -80°C. Avoid repeated freeze.



#### Immunofluorescence

**Image 1.** Immunofluorescence staining of HepG2 cells with ABIN7157546 at 1:133, counter-stained with DAPI. The cells were fixed in 4% formaldehyde, permeabilized using 0.2% Triton X-100 and blocked in 10% normal Goat Serum. The cells were then incubated with the antibody overnight at 4°C. The secondary antibody was Alexa Fluor 488-conjugated AffiniPure Goat Anti-Rabbit IgG(H+L).