

Datasheet for ABIN7157562
anti-KTN1 antibody (AA 978-1116)[Go to Product page](#)

4 Images

Overview

| | |
|----------------------|--|
| Quantity: | 100 µg |
| Target: | KTN1 |
| Binding Specificity: | AA 978-1116 |
| Reactivity: | Human |
| Host: | Rabbit |
| Clonality: | Polyclonal |
| Conjugate: | This KTN1 antibody is un-conjugated |
| Application: | Western Blotting (WB), Immunohistochemistry (IHC), ELISA, Immunoprecipitation (IP) |

Product Details

| | |
|-------------------|---|
| Immunogen: | Recombinant Human Kinectin protein (978-1116AA) |
| Isotype: | IgG |
| Cross-Reactivity: | Human |
| Purification: | >95%, Protein G purified |

Target Details

| | |
|-------------------|---|
| Target: | KTN1 |
| Alternative Name: | KTN1 (KTN1 Products) |
| Background: | Background: Receptor for kinesin thus involved in kinesin-driven vesicle motility. Accumulates in integrin-based adhesion complexes (IAC) upon integrin aggregation by fibronectin. |

Target Details

Aliases: CG-1 antigen antibody, CG1 antibody, CG1 antigen antibody, KIAA0004 antibody, Kinectin antibody, Kinesin receptor antibody, Ktn1 antibody, KTN1_HUMAN antibody, MU-RMS-40.19 antibody

UniProt: [Q86UP2](#)

Application Details

Application Notes: Recommended dilution: WB:1:500-1:5000, IHC:1:200-1:500, IP:1:200-1:2000,

Restrictions: For Research Use only

Handling

Format: Liquid

Buffer: Preservative: 0.03 % Proclin 300
Constituents: 50 % Glycerol, 0.01M PBS, pH 7.4

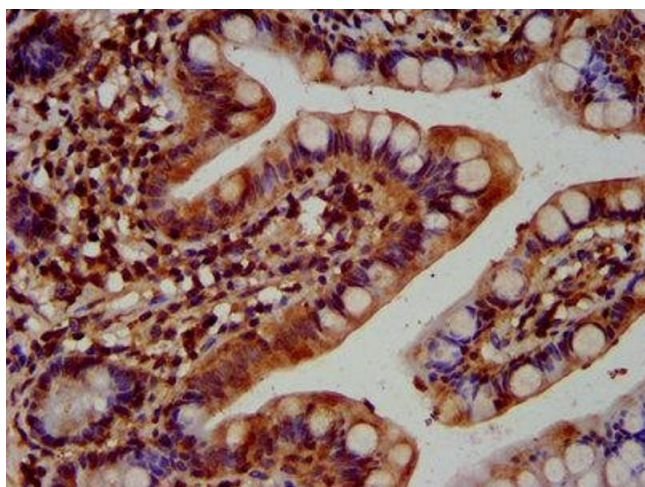
Preservative: ProClin

Precaution of Use: This product contains ProClin: a POISONOUS AND HAZARDOUS SUBSTANCE which should be handled by trained staff only.

Storage: -20 °C,-80 °C

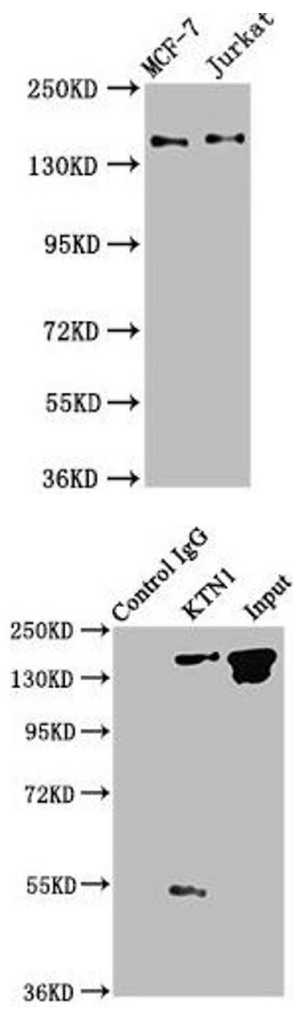
Storage Comment: Upon receipt, store at -20°C or -80°C. Avoid repeated freeze.

Images



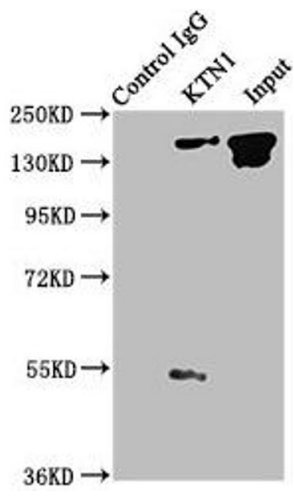
Immunohistochemistry

Image 1. IHC image of ABIN7157562 diluted at 1:400 and staining in paraffin-embedded human small intestine tissue performed on a Leica Bond™ system. After dewaxing and hydration, antigen retrieval was mediated by high pressure in a citrate buffer (pH 6.0). Section was blocked with 10 % normal goat serum 30 min at RT. Then primary antibody (1 % BSA) was incubated at 4 °C overnight. The primary is detected by a biotinylated secondary antibody and visualized using an HRP conjugated SP system.



Western Blotting

Image 2. Western Blot Positive WB detected in: MCF-7 whole cell lysate, Jurkat whole cell lysate All lanes: KTN1 antibody at 3.4 µg/mL Secondary Goat polyclonal to rabbit IgG at 1/50000 dilution Predicted band size: 157, 150, 151, 153 kDa Observed band size: 157 kDa



Western Blotting

Image 3. Immunoprecipitating KTN1 in A549 whole cell lysate Lane 1: Rabbit control IgG instead of ABIN7157562 in A549 whole cell lysate. For western blotting, a HRP-conjugated Protein G antibody was used as the secondary antibody (1/2000) Lane 2: ABIN7157562 (6 µg) + A549 whole cell lysate (1 mg) Lane 3: A549 whole cell lysate (20 µg)

Please check the [product details page](#) for more images. Overall 4 images are available for ABIN7157562.