



[Go to Product page](#)

Datasheet for ABIN7157575
anti-KIFAP3 antibody (AA 660-792)

3 Images

Overview

Quantity:	100 µg
Target:	KIFAP3
Binding Specificity:	AA 660-792
Reactivity:	Human
Host:	Rabbit
Clonality:	Polyclonal
Conjugate:	This KIFAP3 antibody is un-conjugated
Application:	ELISA, Immunohistochemistry (IHC), Immunofluorescence (IF)

Product Details

Immunogen:	Recombinant Human Kinesin-associated protein 3 protein (660-792AA)
Isotype:	IgG
Cross-Reactivity:	Human
Purification:	>95%, Protein G purified

Target Details

Target:	KIFAP3
Alternative Name:	KIFAP3 (KIFAP3 Products)
Background:	Background: Involved in tethering the chromosomes to the spindle pole and in chromosome movement. Binds to the tail domain of the KIF3A/KIF3B heterodimer to form a heterotrimeric

Target Details

KIF3 complex and may regulate the membrane binding of this complex (By similarity).

Aliases: FLJ22818 antibody, KAP 3 antibody, KAP-3 antibody, KAP3 antibody, KIF3AP antibody, KIFA3_HUMAN antibody, Kifap3 antibody, Kinesin associated protein 3 antibody, Kinesin-associated protein 3 antibody, SMAP antibody, Smg GDS antibody, Smg GDS associated protein antibody, Smg GDS-associated protein antibody

UniProt: [Q92845](#)

Pathways: [Hedgehog Signaling](#), [Sensory Perception of Sound](#)

Application Details

Application Notes: Recommended dilution: IHC:1:200-1:500, IF:1:50-1:200,

Restrictions: For Research Use only

Handling

Format: Liquid

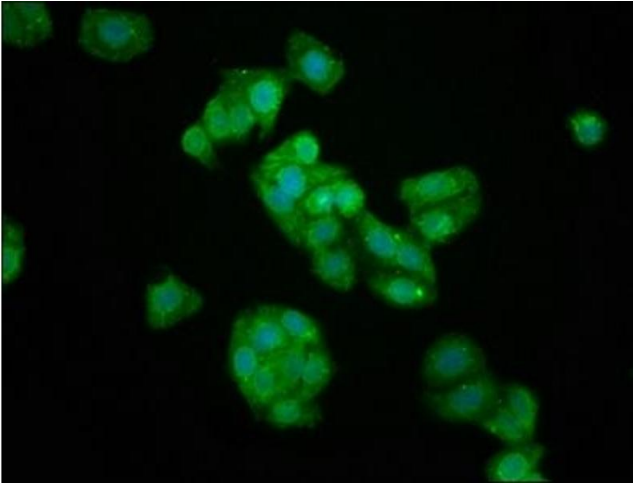
Buffer: Preservative: 0.03 % Proclin 300
Constituents: 50 % Glycerol, 0.01M PBS, pH 7.4

Preservative: ProClin

Precaution of Use: This product contains ProClin: a POISONOUS AND HAZARDOUS SUBSTANCE which should be handled by trained staff only.

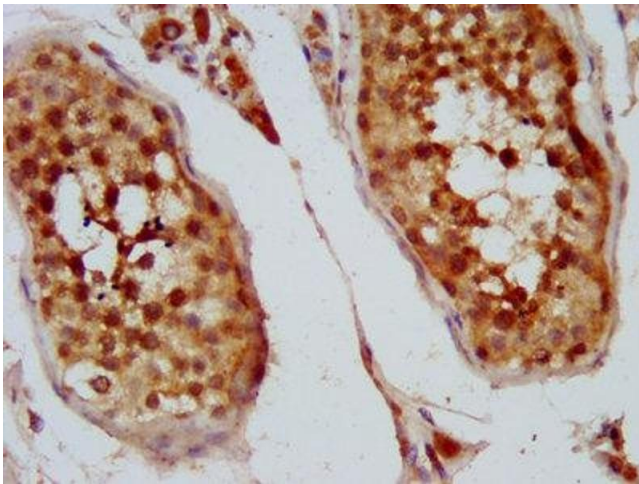
Storage: -20 °C,-80 °C

Storage Comment: Upon receipt, store at -20°C or -80°C. Avoid repeated freeze.



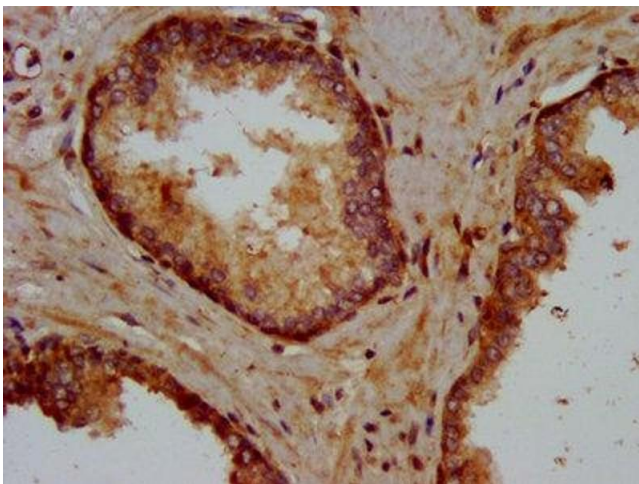
Immunofluorescence

Image 1. Immunofluorescence staining of HepG2 cells with ABIN7157575 at 1:133, counter-stained with DAPI. The cells were fixed in 4% formaldehyde, permeabilized using 0.2% Triton X-100 and blocked in 10% normal Goat Serum. The cells were then incubated with the antibody overnight at 4°C. The secondary antibody was Alexa Fluor 488-conjugated AffiniPure Goat Anti-Rabbit IgG(H+L).



Immunohistochemistry

Image 2. IHC image of ABIN7157575 diluted at 1:400 and staining in paraffin-embedded human testis tissue performed on a Leica Bond™ system. After dewaxing and hydration, antigen retrieval was mediated by high pressure in a citrate buffer (pH 6.0). Section was blocked with 10% normal goat serum 30min at RT. Then primary antibody (1% BSA) was incubated at 4°C overnight. The primary is detected by a biotinylated secondary antibody and visualized using an HRP conjugated SP system.



Immunohistochemistry

Image 3. IHC image of ABIN7157575 diluted at 1:400 and staining in paraffin-embedded human prostate cancer performed on a Leica Bond™ system. After dewaxing and hydration, antigen retrieval was mediated by high pressure in a citrate buffer (pH 6.0). Section was blocked with 10% normal goat serum 30min at RT. Then primary antibody (1% BSA) was incubated at 4°C overnight. The primary is detected by a biotinylated secondary antibody and visualized using an HRP conjugated SP system.