



[Go to Product page](#)

Datasheet for ABIN7157591

anti-KIF13B antibody (AA 1531-1701)

2 Images

Overview

Quantity:	100 µg
Target:	KIF13B
Binding Specificity:	AA 1531-1701
Reactivity:	Human
Host:	Rabbit
Clonality:	Polyclonal
Conjugate:	This KIF13B antibody is un-conjugated
Application:	ELISA, Immunohistochemistry (IHC), Immunofluorescence (IF)

Product Details

Immunogen:	Recombinant Human Kinesin-like protein KIF13B protein (1531-1701AA)
Isotype:	IgG
Cross-Reactivity:	Human
Purification:	>95%, Protein G purified

Target Details

Target:	KIF13B
Alternative Name:	KIF13B (KIF13B Products)
Background:	Background: Involved in reorganization of the cortical cytoskeleton. Regulates axon formation by promoting the formation of extra axons. May be functionally important for the intracellular

Target Details

trafficking of MAGUKs and associated protein complexes.

Aliases: GAKIN antibody, Guanylate kinase associated kinesin antibody, KI13B_HUMAN antibody, KIAA0639 antibody, KIF 13B antibody, KIF13B antibody, Kinesin 13B antibody, Kinesin family member 13B antibody, Kinesin like protein GAKIN antibody, Kinesin like protein KIF13B antibody, Kinesin-like protein GAKIN antibody, Kinesin-like protein KIF13B antibody, OTTHUMP00000225649 antibody

UniProt: [Q9NQT8](#)

Application Details

Application Notes: Recommended dilution: IHC:1:200-1:500, IF:1:50-1:200,

Restrictions: For Research Use only

Handling

Format: Liquid

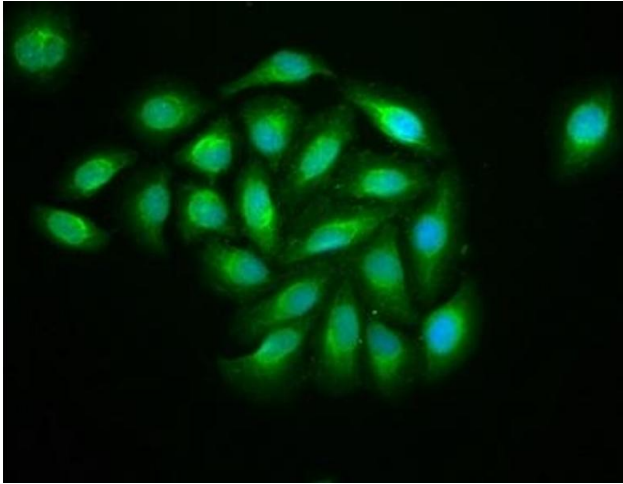
Buffer: Preservative: 0.03 % Proclin 300
Constituents: 50 % Glycerol, 0.01M PBS, pH 7.4

Preservative: ProClin

Precaution of Use: This product contains ProClin: a POISONOUS AND HAZARDOUS SUBSTANCE which should be handled by trained staff only.

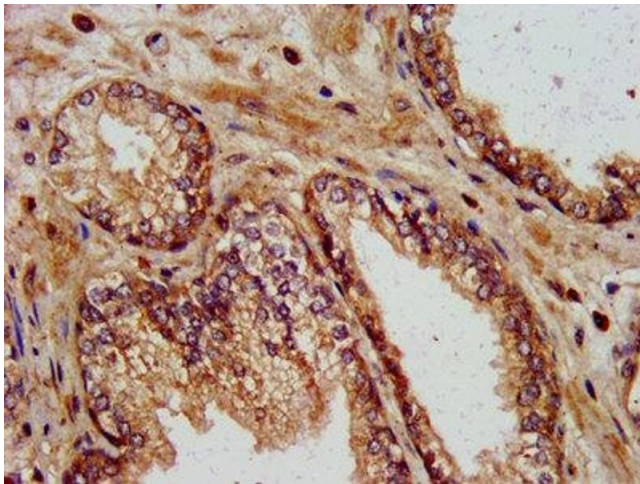
Storage: -20 °C,-80 °C

Storage Comment: Upon receipt, store at -20°C or -80°C. Avoid repeated freeze.



Immunofluorescence

Image 1. Immunofluorescence staining of A549 cells with ABIN7157591 at 1:133, counter-stained with DAPI. The cells were fixed in 4% formaldehyde, permeabilized using 0.2% Triton X-100 and blocked in 10% normal Goat Serum. The cells were then incubated with the antibody overnight at 4°C. The secondary antibody was Alexa Fluor 488-conjugated AffiniPure Goat Anti-Rabbit IgG(H+L).



Immunohistochemistry

Image 2. IHC image of ABIN7157591 diluted at 1:400 and staining in paraffin-embedded human prostate cancer performed on a Leica Bond™ system.