



[Go to Product page](#)

Datasheet for ABIN7157599
anti-KIF15 antibody (AA 1-129)

1 Image

Overview

Quantity:	100 µg
Target:	KIF15
Binding Specificity:	AA 1-129
Reactivity:	Human
Host:	Rabbit
Clonality:	Polyclonal
Conjugate:	This KIF15 antibody is un-conjugated
Application:	ELISA, Immunofluorescence (IF)

Product Details

Immunogen:	Recombinant Human Kinesin-like protein KIF15 protein (1-129AA)
Isotype:	IgG
Cross-Reactivity:	Human
Purification:	>95%, Protein G purified

Target Details

Target:	KIF15
Alternative Name:	KIF15 (KIF15 Products)
Background:	Background: Plus-end directed kinesin-like motor enzyme involved in mitotic spindle assembly. Aliases: KIF15 antibody, KLP2 antibody, KNSL7Kinesin-like protein KIF15 antibody, Kinesin-like

Target Details

protein 2 antibody, hKLP2 antibody, Kinesin-like protein 7 antibody, Serologically defined breast cancer antigen NY-BR-62 antibody

UniProt: [Q9NS87](#)

Application Details

Application Notes: Recommended dilution: IF:1:50-1:200,

Restrictions: For Research Use only

Handling

Format: Liquid

Buffer: Preservative: 0.03 % Proclin 300
Constituents: 50 % Glycerol, 0.01M PBS, pH 7.4

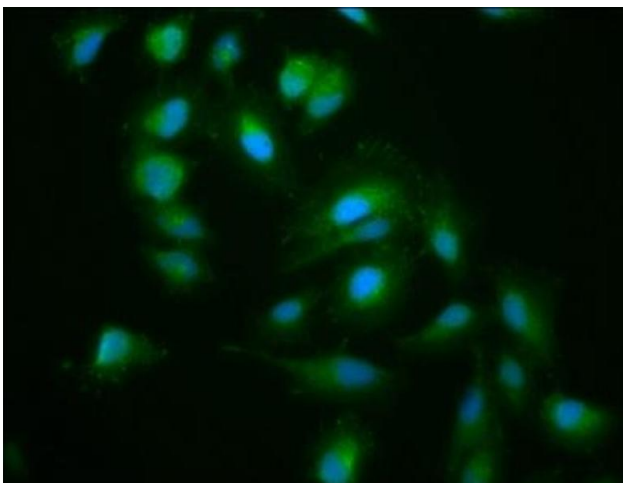
Preservative: ProClin

Precaution of Use: This product contains ProClin: a POISONOUS AND HAZARDOUS SUBSTANCE which should be handled by trained staff only.

Storage: -20 °C,-80 °C

Storage Comment: Upon receipt, store at -20°C or -80°C. Avoid repeated freeze.

Images



Immunofluorescence

Image 1. Immunofluorescence staining of HeLa cells with ABIN7157599 at 1:200, counter-stained with DAPI. The cells were fixed in 4% formaldehyde, permeabilized using 0.2% Triton X-100 and blocked in 10% normal Goat Serum. The cells were then incubated with the antibody overnight at 4°C. The secondary antibody was Alexa Fluor 488-conjugated AffiniPure Goat Anti-Rabbit IgG(H+L).