



[Go to Product page](#)

Datasheet for ABIN7157611
anti-KIF1B antibody (AA 1547-1816)

2 Images

Overview

Quantity:	100 µL
Target:	KIF1B
Binding Specificity:	AA 1547-1816
Reactivity:	Human
Host:	Rabbit
Clonality:	Polyclonal
Conjugate:	This KIF1B antibody is un-conjugated
Application:	Immunohistochemistry (IHC), ELISA

Product Details

Immunogen:	Recombinant Human Kinesin-like protein KIF1B protein (1547-1816AA)
Isotype:	IgG
Cross-Reactivity:	Human
Purification:	Antigen Affinity Purified

Target Details

Target:	KIF1B
Alternative Name:	KIF1B (KIF1B Products)
Background:	Background: Motor for anterograde transport of mitochondria. Has a microtubule plus end-directed motility. Isoform 2 is required for induction of neuronal apoptosis.

Target Details

Aliases: KIF1B antibody, KIAA0591 antibody, KIAA1448Kinesin-like protein KIF1B antibody, Klp antibody

UniProt: [O60333](#)

Application Details

Application Notes: Recommended dilution: IHC:1:20-1:200,

Restrictions: For Research Use only

Handling

Format: Liquid

Buffer: PBS with 0.02 % sodium azide, 50 % glycerol, pH 7.3.

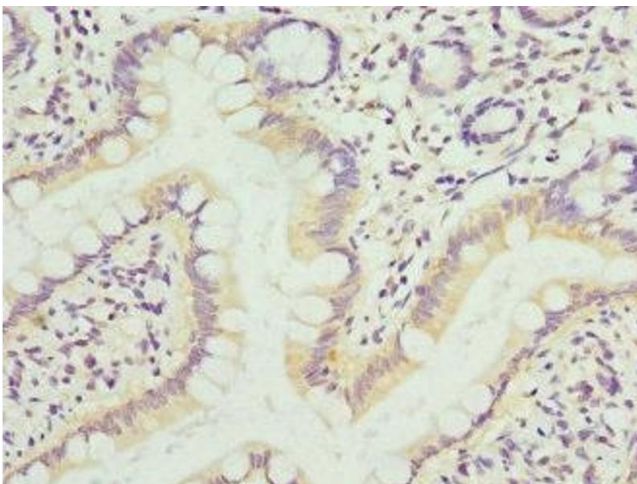
Preservative: Sodium azide

Precaution of Use: This product contains Sodium azide: a POISONOUS AND HAZARDOUS SUBSTANCE which should be handled by trained staff only.

Storage: -20 °C,-80 °C

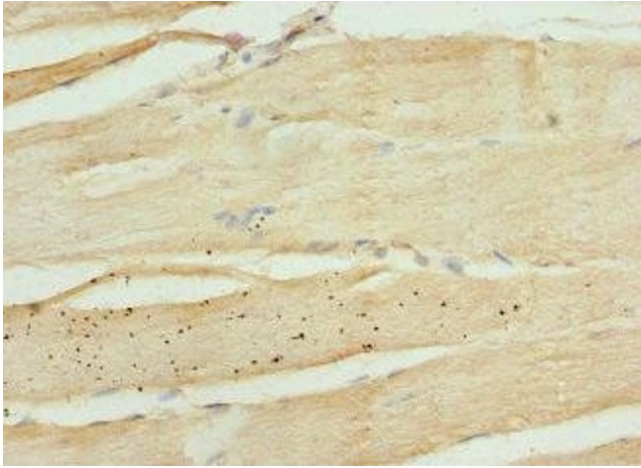
Storage Comment: Upon receipt, store at -20°C or -80°C. Avoid repeated freeze.

Images



Immunohistochemistry

Image 1. Immunohistochemistry of paraffin-embedded human small intestine tissue using ABIN7157611 at dilution of 1:100



Immunohistochemistry

Image 2. Immunohistochemistry of paraffin-embedded human skeletal muscle tissue using ABIN7157611 at dilution of 1:100