

Datasheet for ABIN7157612
anti-KIF2A antibody (AA 161-294)

2 Images

[Go to Product page](#)

Overview

Quantity:	100 µg
Target:	KIF2A
Binding Specificity:	AA 161-294
Reactivity:	Human
Host:	Rabbit
Clonality:	Polyclonal
Conjugate:	This KIF2A antibody is un-conjugated
Application:	ELISA, Immunohistochemistry (IHC), Immunoprecipitation (IP)

Product Details

Immunogen:	Recombinant Human Kinesin-like protein KIF20A protein (161-294AA)
Isotype:	IgG
Cross-Reactivity:	Human
Purification:	>95%, Protein G purified

Target Details

Target:	KIF2A
Alternative Name:	KIF2A (KIF2A Products)
Background:	Background: Mitotic kinesin required for chromosome passenger complex (CPC)-mediated cytokinesis. Following phosphorylation by PLK1, involved in recruitment of PLK1 to the central

Target Details

spindle. Interacts with guanosine triphosphate (GTP)-bound forms of RAB6A and RAB6B. May act as a motor required for the retrograde RAB6 regulated transport of Golgi membranes and associated vesicles along microtubules. Has a microtubule plus end-directed motility.

Aliases: AA415432 antibody, FLJ21151 antibody, GG10 2 antibody, GG10_2 antibody, KI20A_HUMAN antibody, KIF20A antibody, kinesin family member 20A antibody, Kinesin like protein KIF20A antibody, Kinesin-like protein 174 antibody, Kinesin-like protein KIF20A antibody, mitotic kinesin like protein 2 antibody, Mitotic kinesin-like protein 2 antibody, MKlp2 antibody, OTTHUMP00000159481 antibody, RAB6 interacting, kinesin like (rabkinesin6) antibody, Rab6-interacting kinesin-like protein antibody, RAB6-INTERACTING PROTEIN, KINESIN-LIKE antibody, RAB6KIFL antibody, Rabkinesin 6 antibody, Rabkinesin-6 antibody

UniProt: [095235](#)

Pathways: [Microtubule Dynamics](#), [Ribonucleoprotein Complex Subunit Organization](#)

Application Details

Application Notes: Recommended dilution: IHC:1:50-1:200, IP:1:200-1:2000,

Restrictions: For Research Use only

Handling

Format: Liquid

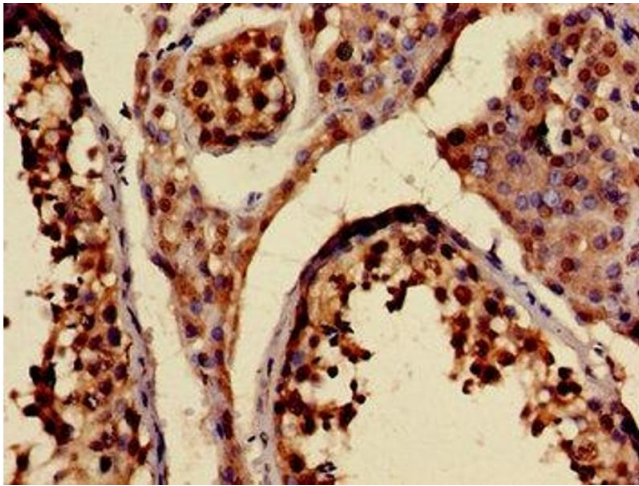
Buffer: Preservative: 0.03 % Proclin 300
Constituents: 50 % Glycerol, 0.01M PBS, pH 7.4

Preservative: ProClin

Precaution of Use: This product contains ProClin: a POISONOUS AND HAZARDOUS SUBSTANCE which should be handled by trained staff only.

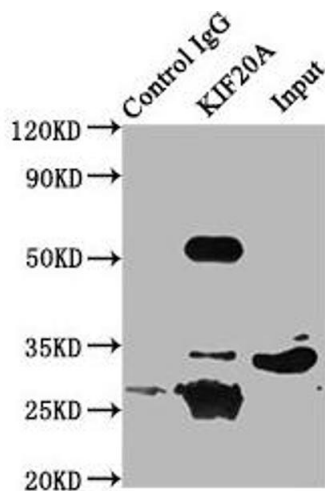
Storage: -20 °C,-80 °C

Storage Comment: Upon receipt, store at -20°C or -80°C. Avoid repeated freeze.



Immunohistochemistry

Image 1. Immunohistochemistry of paraffin-embedded human testis tissue using ABIN7157612 at dilution of 1:100



Western Blotting

Image 2. Immunoprecipitating KIF20A in 293 whole cell lysate Lane 1: Rabbit control IgG (1 µg) instead of ABIN7157612 in 293 whole cell lysate. For western blotting, a HRP-conjugated Protein G antibody was used as the secondary antibody (1/2000) Lane 2: ABIN7157612 (6 µg) + 293 whole cell lysate (500 µg) Lane 3: 293 whole cell lysate (10 µg)