

Datasheet for ABIN7157620
anti-KIF21B antibody (AA 829-986)[Go to Product page](#)

1 Image

Overview

Quantity:	100 µg
Target:	KIF21B
Binding Specificity:	AA 829-986
Reactivity:	Human
Host:	Rabbit
Clonality:	Polyclonal
Conjugate:	This KIF21B antibody is un-conjugated
Application:	ELISA, Immunohistochemistry (IHC)

Product Details

Immunogen:	Recombinant Human Kinesin-like protein KIF21B protein (829-986AA)
Isotype:	IgG
Cross-Reactivity:	Human
Purification:	>95%, Protein G purified

Target Details

Target:	KIF21B
Alternative Name:	KIF21B (KIF21B Products)
Background:	Background: Plus-end directed microtubule-dependent motor protein which displays processive activity. Is involved in regulation of microtubule dynamics, synapse function and neuronal

Target Details

morphology, including dendritic tree branching and spine formation. Plays a role in learning and memory. Involved in delivery of gamma-aminobutyric acid (GABA(A)) receptor to cell surface.
Aliases: KI21B_HUMAN antibody, KIAA0449 antibody, KIF21B antibody, Kinesin-like protein KIF21B antibody

UniProt: [O75037](#)

Application Details

Application Notes: Recommended dilution: IHC:1:200-1:500,

Restrictions: For Research Use only

Handling

Format: Liquid

Buffer: Preservative: 0.03 % Proclin 300
Constituents: 50 % Glycerol, 0.01M PBS, pH 7.4

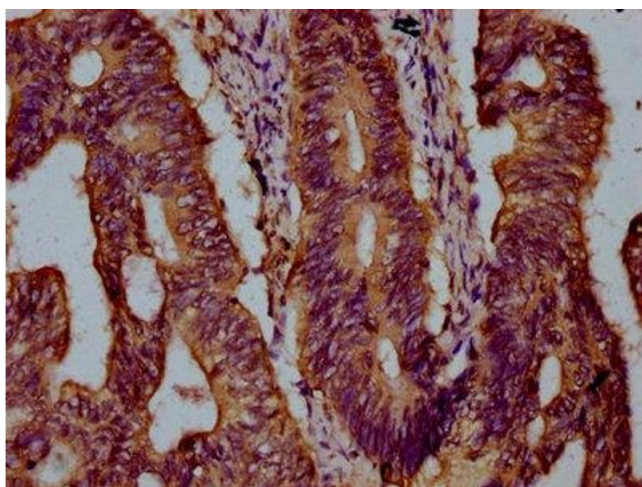
Preservative: ProClin

Precaution of Use: This product contains ProClin: a POISONOUS AND HAZARDOUS SUBSTANCE which should be handled by trained staff only.

Storage: -20 °C,-80 °C

Storage Comment: Upon receipt, store at -20°C or -80°C. Avoid repeated freeze.

Images



Immunohistochemistry

Image 1. IHC image of ABIN7157620 diluted at 1:300 and staining in paraffin-embedded human colon cancer performed on a Leica Bond™ system. After dewaxing and hydration, antigen retrieval was mediated by high pressure in a citrate buffer (pH 6.0). Section was blocked with 10% normal goat serum 30min at RT. Then primary antibody (1% BSA) was incubated at 4°C overnight. The primary is detected by a biotinylated secondary antibody and visualized using an HRP conjugated SP system.