

Datasheet for ABIN7157628
anti-KIF23 antibody (AA 865-960)



[Go to Product page](#)

1 Image

Overview

Quantity:	100 µg
Target:	KIF23
Binding Specificity:	AA 865-960
Reactivity:	Human
Host:	Rabbit
Clonality:	Polyclonal
Conjugate:	This KIF23 antibody is un-conjugated
Application:	ELISA, Immunohistochemistry (IHC)

Product Details

Immunogen:	Recombinant Human Kinesin-like protein KIF23 protein (865-960AA)
Isotype:	IgG
Cross-Reactivity:	Human
Purification:	>95%, Protein G purified

Target Details

Target:	KIF23
Alternative Name:	KIF23 (KIF23 Products)
Background:	Background: Component of the centralspindlin complex that serves as a microtubule-dependent and Rho-mediated signaling required for the myosin contractile ring formation

Target Details

during the cell cycle cytokinesis. Essential for cytokinesis in Rho-mediated signaling. Required for the localization of ECT2 to the central spindle. Plus-end-directed motor enzyme that moves antiparallel microtubules in vitro.

Aliases: CHO 1 antibody, CHO1 antibody, KIF 23 antibody, KIF23 antibody, KIF23_HUMAN antibody, Kinesin family member 23 antibody, Kinesin like 5 antibody, Kinesin like protein 5 antibody, Kinesin like protein KIF 23 antibody, Kinesin like protein KIF23 antibody, Kinesin-like protein 5 antibody, Kinesin-like protein KIF23 antibody, KNS L5 antibody, KNSL 5 antibody, KNSL5 antibody, Mitotic kinesin like 1 antibody, Mitotic kinesin like protein 1 antibody, Mitotic kinesin-like protein 1 antibody, MKLP 1 antibody

UniProt: [Q02241](#)

Application Details

Application Notes: Recommended dilution: IHC:1:200-1:500,

Restrictions: For Research Use only

Handling

Format: Liquid

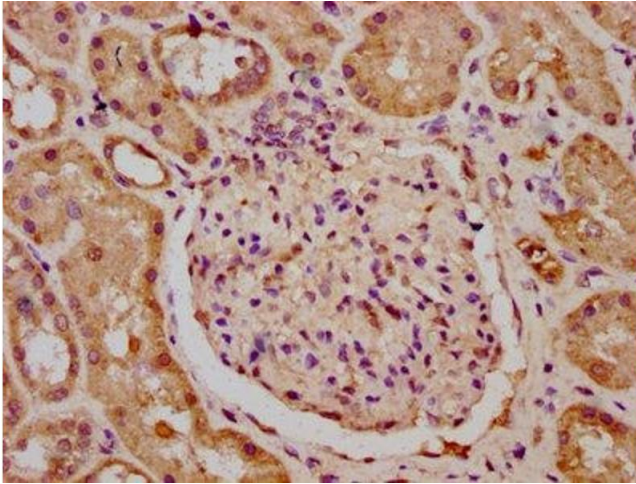
Buffer: Preservative: 0.03 % Proclin 300
Constituents: 50 % Glycerol, 0.01M PBS, pH 7.4

Preservative: ProClin

Precaution of Use: This product contains ProClin: a POISONOUS AND HAZARDOUS SUBSTANCE which should be handled by trained staff only.

Storage: -20 °C,-80 °C

Storage Comment: Upon receipt, store at -20°C or -80°C. Avoid repeated freeze.



Immunohistochemistry

Image 1. IHC image of ABIN7157628 diluted at 1:400 and staining in paraffin-embedded human kidney tissue performed on a Leica Bond™ system. After dewaxing and hydration, antigen retrieval was mediated by high pressure in a citrate buffer (pH 6.0). Section was blocked with 10% normal goat serum 30min at RT. Then primary antibody (1% BSA) was incubated at 4°C overnight. The primary is detected by a biotinylated secondary antibody and visualized using an HRP conjugated SP system.