

Datasheet for ABIN7157636
anti-KIF25 antibody (AA 1-262)[Go to Product page](#)

1 Image

Overview

Quantity:	100 µL
Target:	KIF25
Binding Specificity:	AA 1-262
Reactivity:	Human
Host:	Rabbit
Clonality:	Polyclonal
Conjugate:	This KIF25 antibody is un-conjugated
Application:	Immunohistochemistry (IHC), ELISA

Product Details

Immunogen:	Recombinant Human Kinesin-like protein KIF25 protein (1-262AA)
Isotype:	IgG
Cross-Reactivity:	Human
Purification:	Antigen Affinity Purified

Target Details

Target:	KIF25
Alternative Name:	KIF25 (KIF25 Products)
Background:	Background: Minus-end microtubule-dependent motor protein (By similarity). Acts as a negative regulator of centrosome separation required to prevent premature centrosome separation

Target Details

during interphase (PubMed:28263957). Required to maintain a centered nucleus to ensure that the spindle is stably oriented at the onset of mitosis (PubMed:28263957). May also act as a negative regulator of amino acid starvation-induced autophagy (PubMed:22354037).

Aliases: KIF25 antibody, KNSL3Kinesin-like protein KIF25 antibody, Kinesin-like protein 3 antibody

UniProt: [Q9UIL4](#)

Application Details

Application Notes: Recommended dilution: IHC:1:20-1:200,

Restrictions: For Research Use only

Handling

Format: Liquid

Buffer: Preservative: 0.03 % Proclin 300
Constituents: 50 % Glycerol, 0.01M PBS, pH 7.4

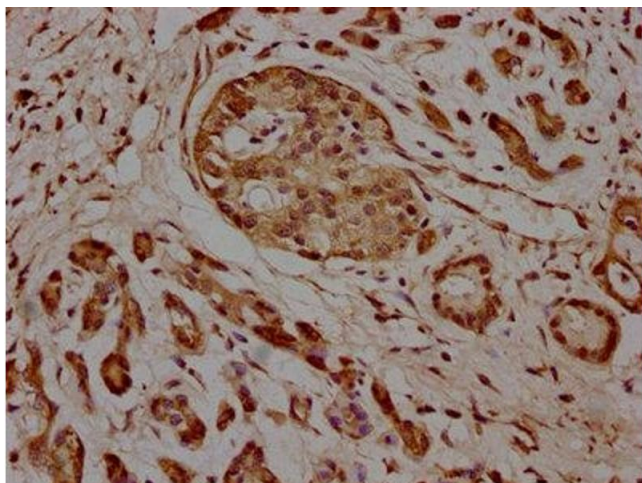
Preservative: ProClin

Precaution of Use: This product contains ProClin: a POISONOUS AND HAZARDOUS SUBSTANCE which should be handled by trained staff only.

Storage: -20 °C,-80 °C

Storage Comment: Upon receipt, store at -20°C or -80°C. Avoid repeated freeze.

Images



Immunohistochemistry

Image 1. IHC image of ABIN7157636 diluted at 1:100 and staining in paraffin-embedded human pancreatic cancer performed on a Leica Bond™ system. After dewaxing and hydration, antigen retrieval was mediated by high pressure in a citrate buffer (pH 6.0). Section was blocked with 10 % normal goat serum 30 min at RT. Then primary antibody (1 % BSA) was incubated at 4 °C overnight. The primary is detected by a biotinylated secondary antibody and

visualized using an HRP conjugated SP system.