

Datasheet for ABIN7157640
anti-KIF26B antibody (AA 8-133)[Go to Product page](#)

2 Images

Overview

Quantity:	100 µg
Target:	KIF26B
Binding Specificity:	AA 8-133
Reactivity:	Human
Host:	Rabbit
Clonality:	Polyclonal
Conjugate:	This KIF26B antibody is un-conjugated
Application:	ELISA, Immunohistochemistry (IHC)

Product Details

Immunogen:	Recombinant Human Kinesin-like protein KIF26B protein (8-133AA)
Isotype:	IgG
Cross-Reactivity:	Human
Purification:	>95%, Protein G purified

Target Details

Target:	KIF26B
Alternative Name:	KIF26B (KIF26B Products)
Background:	Background: Essential for embryonic kidney development. Plays an important role in the compact adhesion between mesenchymal cells adjacent to the ureteric buds, possibly by

Target Details

interacting with MYH10. This could lead to the establishment of the basolateral integrity of the mesenchyme and the polarized expression of ITGA8, which maintains the GDNF expression required for further ureteric bud attraction. Although it seems to lack ATPase activity it is constitutively associated with microtubules.

Aliases: FLJ10157 antibody, KI26B_HUMAN antibody, KIF26B antibody, Kinesin-like protein KIF26B antibody

UniProt: [Q2KJY2](#)

Application Details

Application Notes: Recommended dilution: IHC:1:20-1:200,

Restrictions: For Research Use only

Handling

Format: Liquid

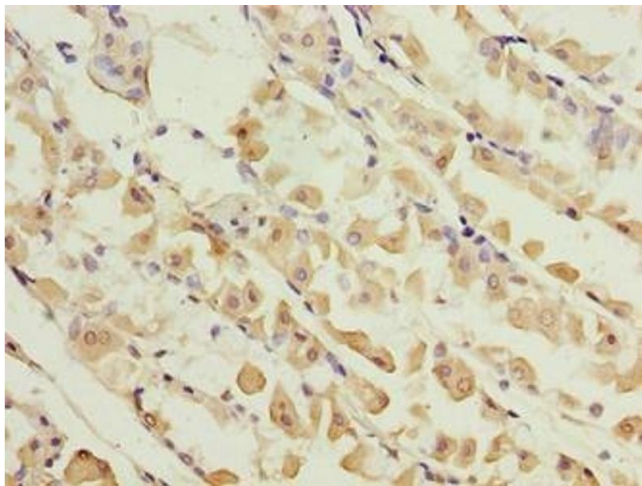
Buffer: Preservative: 0.03 % Proclin 300
Constituents: 50 % Glycerol, 0.01M PBS, PH 7.4

Preservative: ProClin

Precaution of Use: This product contains ProClin: a POISONOUS AND HAZARDOUS SUBSTANCE which should be handled by trained staff only.

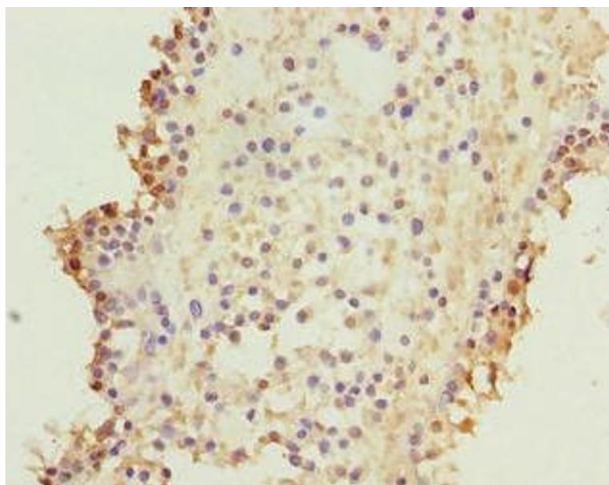
Storage: -20 °C,-80 °C

Storage Comment: Upon receipt, store at -20°C or -80°C. Avoid repeated freeze.



Immunohistochemistry

Image 1. Immunohistochemistry of paraffin-embedded human gastric cancer using ABIN7157640 at dilution of 1:100



Immunohistochemistry

Image 2. Immunohistochemistry of paraffin-embedded human breast cancer using ABIN7157640 at dilution of 1:100