



[Go to Product page](#)

Datasheet for ABIN7157649
anti-KIF2C antibody (AA 1-190)

2 Images

Overview

Quantity:	100 µL
Target:	KIF2C
Binding Specificity:	AA 1-190
Reactivity:	Human
Host:	Rabbit
Clonality:	Polyclonal
Conjugate:	This KIF2C antibody is un-conjugated
Application:	ELISA, Immunohistochemistry (IHC)

Product Details

Immunogen:	Recombinant Human Kinesin-like protein KIF2C protein (1-190AA)
Isotype:	IgG
Cross-Reactivity:	Human
Purification:	Antigen Affinity Purified

Target Details

Target:	KIF2C
Alternative Name:	KIF2C (KIF2C Products)
Background:	Background: In complex with KIF18B, constitutes the major microtubule plus-end depolymerizing activity in mitotic cells. Regulates the turnover of microtubules at the

Target Details

kinetochore and functions in chromosome segregation during mitosis.

Aliases: 4930402F02Rik antibody, CT139 antibody, ESTM5 antibody, KIF 2C antibody, kif2c antibody, KIF2C_HUMAN antibody, Kinesein Family Member 2C antibody, Kinesin family member 2C antibody, kinesin like 6 (mitotic centromere associated kinesin) antibody, Kinesin like 6 antibody, Kinesin like protein 6 antibody, Kinesin like protein KIF2C antibody, Kinesin-like protein 6 antibody, Kinesin-like protein KIF2C antibody, KNS L6 antibody, KNSL 6 antibody, KNSL6 antibody, MCAK antibody, MGC11883 antibody, Mitotic centromere associated kinesin antibody, Mitotic centromere-associated kinesin antibody, OTTHUMP00000010066 antibody, X83316 antibody

UniProt: [Q99661](#)

Pathways: [Microtubule Dynamics](#)

Application Details

Application Notes: Recommended dilution: IHC:1:20-1:200,

Restrictions: For Research Use only

Handling

Format: Liquid

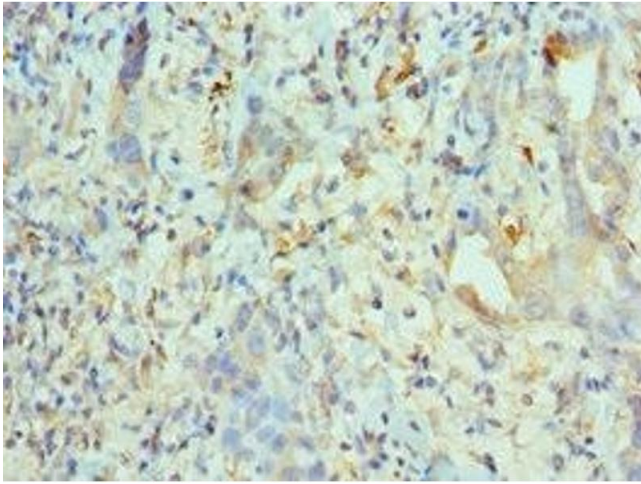
Buffer: PBS with 0.02 % sodium azide, 50 % glycerol, pH 7.3.

Preservative: Sodium azide

Precaution of Use: This product contains Sodium azide: a POISONOUS AND HAZARDOUS SUBSTANCE which should be handled by trained staff only.

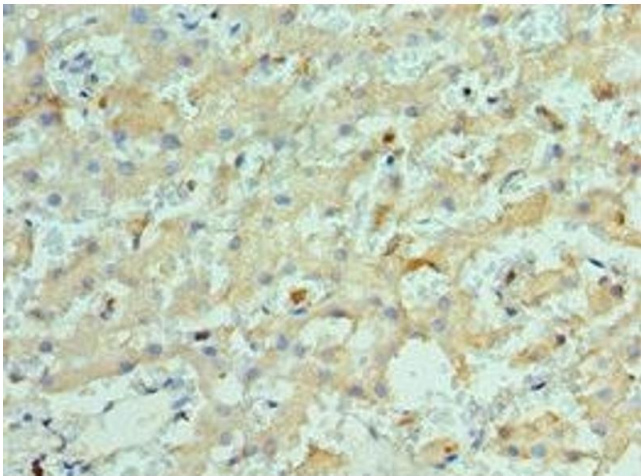
Storage: -20 °C,-80 °C

Storage Comment: Upon receipt, store at -20°C or -80°C. Avoid repeated freeze.



Immunohistochemistry

Image 1. Immunohistochemistry of paraffin-embedded human lung cancer using ABIN7157649 at dilution of 1:100



Immunohistochemistry

Image 2. Immunohistochemistry of paraffin-embedded human liver cancer using ABIN7157649 at dilution of 1:100