

Datasheet for ABIN7157651  
**anti-KIF3C antibody (AA 158-267)**

## 3 Images

[Go to Product page](#)

## Overview

Quantity:	100 µg
Target:	KIF3C
Binding Specificity:	AA 158-267
Reactivity:	Human
Host:	Rabbit
Clonality:	Polyclonal
Conjugate:	This KIF3C antibody is un-conjugated
Application:	Western Blotting (WB), ELISA, Immunohistochemistry (IHC), Immunofluorescence (IF)

## Product Details

Immunogen:	Recombinant Human Kinesin-like protein KIF3C protein (158-267AA)
Isotype:	IgG
Cross-Reactivity:	Human
Purification:	>95%, Protein G purified

## Target Details

Target:	KIF3C
Alternative Name:	KIF3C ( <a href="#">KIF3C Products</a> )
Background:	Background: Microtubule-based anterograde translocator for membranous organelles. Aliases: KIAA4058 antibody, KIF3C antibody, KIF3C variant protein antibody, KIF3C_HUMAN

## Target Details

antibody, Kinesin family member 3C antibody, Kinesin like protein KIF3C antibody, Kinesin-like protein KIF3C antibody, mKIAA4058 antibody

UniProt: [O14782](#)

Pathways: [Hedgehog Signaling](#)

## Application Details

Application Notes: Recommended dilution: WB:1:500-1:5000, IHC:1:500-1:1000, IF:1:200-1:500,

Restrictions: For Research Use only

## Handling

Format: Liquid

Buffer: Preservative: 0.03 % Proclin 300  
Constituents: 50 % Glycerol, 0.01M PBS, pH 7.4

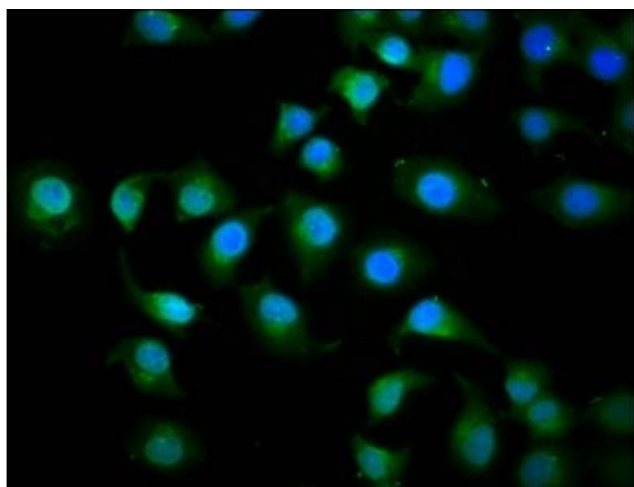
Preservative: ProClin

Precaution of Use: This product contains ProClin: a POISONOUS AND HAZARDOUS SUBSTANCE which should be handled by trained staff only.

Storage: -20 °C, -80 °C

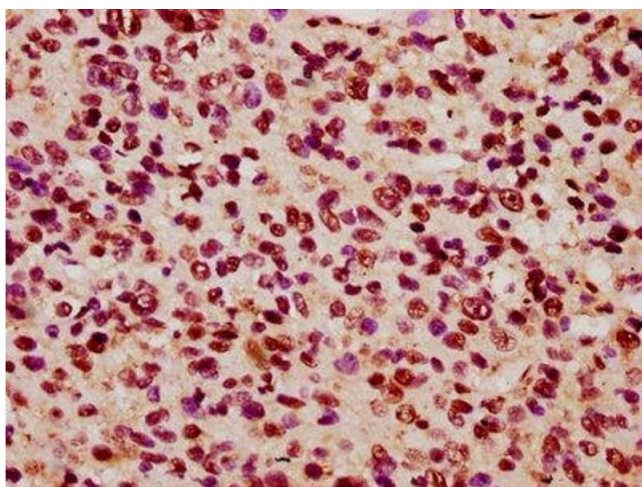
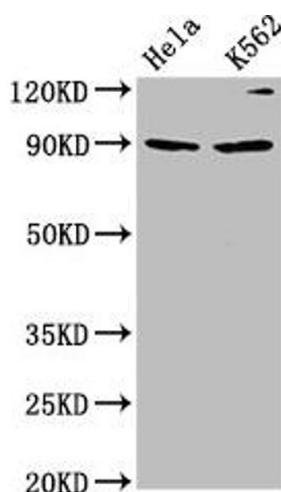
Storage Comment: Upon receipt, store at -20°C or -80°C. Avoid repeated freeze.

## Images



### Immunofluorescence

**Image 1.** Immunofluorescence staining of A549 cells with ABIN7157651 at 1:200, counter-stained with DAPI. The cells were fixed in 4% formaldehyde, permeabilized using 0.2% Triton X-100 and blocked in 10% normal Goat Serum. The cells were then incubated with the antibody overnight at 4°C. The secondary antibody was Alexa Fluor 488-conjugated AffiniPure Goat Anti-Rabbit IgG(H+L).



### Western Blotting

**Image 2.** Western Blot Positive WB detected in: HeLa whole cell lysate, K562 whole cell lysate All lanes: KIF3C antibody at 4.2 µg/mL Secondary Goat polyclonal to rabbit IgG at 1/50000 dilution Predicted band size: 90 kDa Observed band size: 90 kDa

### Immunohistochemistry

**Image 3.** IHC image of ABIN7157651 diluted at 1:600 and staining in paraffin-embedded human glioma performed on a Leica Bond™ system. After dewaxing and hydration, antigen retrieval was mediated by high pressure in a citrate buffer (pH 6.0). Section was blocked with 10% normal goat serum 30min at RT. Then primary antibody (1% BSA) was incubated at 4°C overnight. The primary is detected by a biotinylated secondary antibody and visualized using an HRP conjugated SP system.