



[Go to Product page](#)

Datasheet for ABIN7157655  
**anti-KIF6 antibody (AA 565-814)**

2 Images

Overview

Quantity:	100 µL
Target:	KIF6
Binding Specificity:	AA 565-814
Reactivity:	Human
Host:	Rabbit
Clonality:	Polyclonal
Conjugate:	This KIF6 antibody is un-conjugated
Application:	ELISA, Immunohistochemistry (IHC)

Product Details

Immunogen:	Recombinant Human Kinesin-like protein KIF6 protein (565-814AA)
Isotype:	IgG
Cross-Reactivity:	Human
Purification:	Antigen Affinity Purified

Target Details

Target:	KIF6
Alternative Name:	KIF6 ( <a href="#">KIF6 Products</a> )
Background:	KIF6 antibody, C6orf102Kinesin-like protein KIF6 antibody
UniProt:	<a href="#">Q6ZMV9</a>

## Application Details

Application Notes: Recommended dilution: IHC:1:20-1:200,

Restrictions: For Research Use only

## Handling

Format: Liquid

Buffer: PBS with 0.02 % sodium azide, 50 % glycerol, pH 7.3.

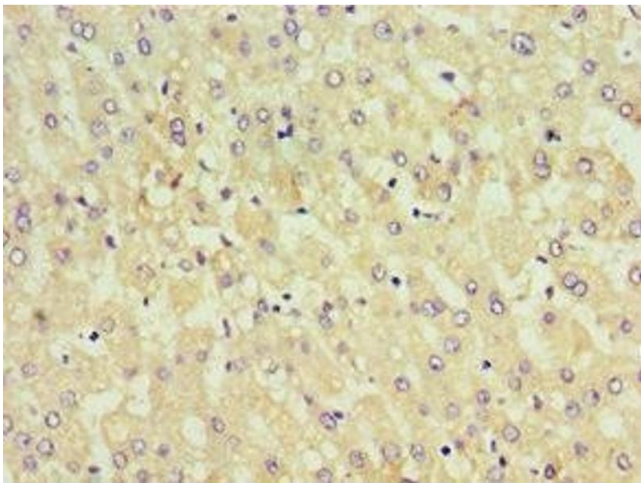
Preservative: Sodium azide

Precaution of Use: This product contains Sodium azide: a POISONOUS AND HAZARDOUS SUBSTANCE which should be handled by trained staff only.

Storage: -20 °C,-80 °C

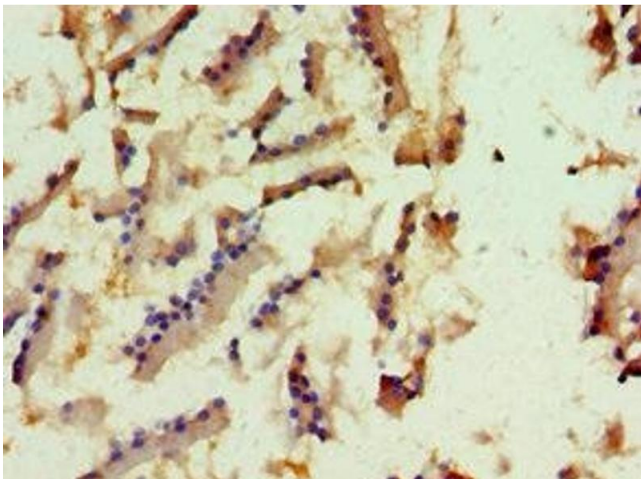
Storage Comment: Upon receipt, store at -20°C or -80°C. Avoid repeated freeze.

## Images



### Immunohistochemistry

**Image 1.** Immunohistochemistry of paraffin-embedded human liver tissue using ABIN7157655 at dilution of 1:100



### Immunohistochemistry

**Image 2.** Immunohistochemistry of paraffin-embedded human prostate tissue using ABIN7157655 at dilution of 1:100