

Datasheet for ABIN7157656
anti-KIFC1 antibody (AA 337-498)



[Go to Product page](#)

1 Image

Overview

Quantity:	100 µg
Target:	KIFC1
Binding Specificity:	AA 337-498
Reactivity:	Human
Host:	Rabbit
Clonality:	Polyclonal
Conjugate:	This KIFC1 antibody is un-conjugated
Application:	ELISA, Immunofluorescence (IF)

Product Details

Immunogen:	Recombinant Human Kinesin-like protein KIFC1 protein (337-498AA)
Isotype:	IgG
Cross-Reactivity:	Human
Purification:	>95%, Protein G purified

Target Details

Target:	KIFC1
Alternative Name:	KIFC1 (KIFC1 Products)
Background:	Background: Minus end-directed microtubule-dependent motor required for bipolar spindle formation (PubMed:15843429). May contribute to movement of early endocytic vesicles (By

Target Details

similarity). Regulates cilium formation and structure (By similarity).

Aliases: HSET antibody, HSET KNSL2 antibody, KIF C1 antibody, KIFC 1 antibody, KIFC1 antibody, KIFC1_HUMAN antibody, Kinesin family member C1 antibody, Kinesin like 2 antibody, Kinesin like protein 2 antibody, Kinesin like protein KIFC1 antibody, Kinesin related protein HSET antibody, Kinesin-like protein 2 antibody, Kinesin-like protein KIFC1 antibody, Kinesin-related protein HSET antibody, KNSL 2 antibody, KNSL2 antibody, MGC1202 antibody, MGC149736 antibody, MGC149737 antibody, Mitotic kinesin like protein 2 antibody, MKLP 2 antibody, MKLP2 antibody, RAB6 KIFL antibody, Rabkinesin 6 antibody

UniProt: [Q9BW19](#)

Application Details

Application Notes: Recommended dilution: IF:1:200-1:500,

Restrictions: For Research Use only

Handling

Format: Liquid

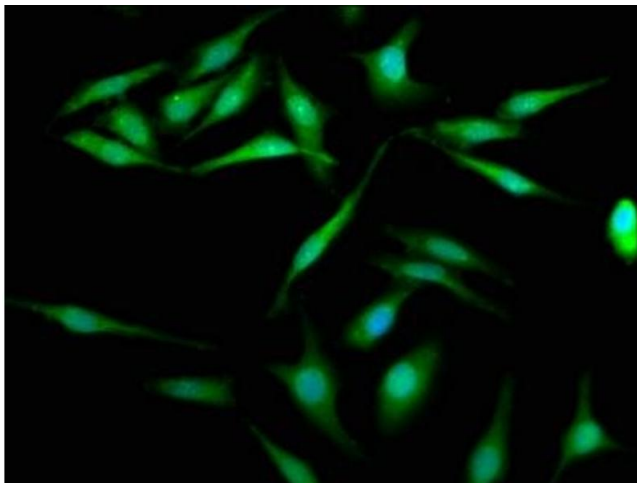
Buffer: Preservative: 0.03 % Proclin 300
Constituents: 50 % Glycerol, 0.01M PBS, pH 7.4

Preservative: ProClin

Precaution of Use: This product contains ProClin: a POISONOUS AND HAZARDOUS SUBSTANCE which should be handled by trained staff only.

Storage: -20 °C,-80 °C

Storage Comment: Upon receipt, store at -20°C or -80°C. Avoid repeated freeze.



Immunofluorescence

Image 1. Immunofluorescence staining of HeLa cells with ABIN7157656 at 1:200, counter-stained with DAPI. The cells were fixed in 4% formaldehyde, permeabilized using 0.2% Triton X-100 and blocked in 10% normal Goat Serum. The cells were then incubated with the antibody overnight at 4°C. The secondary antibody was Alexa Fluor 488-conjugated AffiniPure Goat Anti-Rabbit IgG(H+L).