



[Go to Product page](#)

Datasheet for ABIN7157675
anti-DSN1 antibody (AA 1-356)

2 Images

Overview

Quantity:	100 µL
Target:	DSN1
Binding Specificity:	AA 1-356
Reactivity:	Human
Host:	Rabbit
Clonality:	Polyclonal
Conjugate:	This DSN1 antibody is un-conjugated
Application:	Western Blotting (WB), ELISA, Immunohistochemistry (IHC)

Product Details

Immunogen:	Recombinant Human Kinetochores-associated protein DSN1 homolog protein (1-356AA)
Isotype:	IgG
Cross-Reactivity:	Human, Mouse
Purification:	Antigen Affinity Purified

Target Details

Target:	DSN1
Alternative Name:	DSN1 (DSN1 Products)
Background:	Background: Part of the MIS12 complex which is required for normal chromosome alignment and segregation and kinetochores formation during mitosis.

Target Details

Aliases: C20orf172 antibody, Chromosome 20 open reading frame 172 antibody, dJ469A13.2 antibody, DSN1 antibody, DSN1, MIND kinetochore complex component, homolog antibody, DSN1, MIND kinetochore complex component, homolog (S. cerevisiae) antibody, DSN1, MIS12 kinetochore complex component antibody, DSN1_HUMAN antibody, FLJ13346 antibody, hKNL3 antibody, Kinetochore associated protein DSN1 antibody, Kinetochore associated protein DSN1 homolog antibody, Kinetochore null 3 homolog antibody, Kinetochore-associated protein DSN1 homolog antibody, KNL3 antibody, MGC32987 antibody, MIS13 antibody

UniProt: [Q9H410](#)

Application Details

Application Notes: Recommended dilution: WB:1:1000-1:5000, IHC:1:20-1:200,

Restrictions: For Research Use only

Handling

Format: Liquid

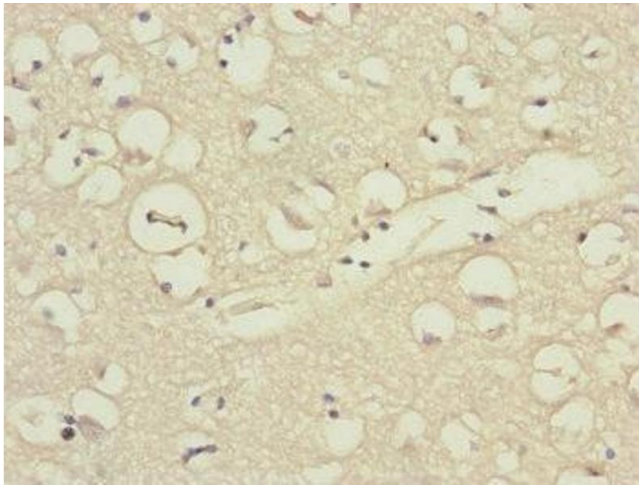
Buffer: PBS with 0.02 % sodium azide, 50 % glycerol, pH 7.3.

Preservative: Sodium azide

Precaution of Use: This product contains Sodium azide: a POISONOUS AND HAZARDOUS SUBSTANCE which should be handled by trained staff only.

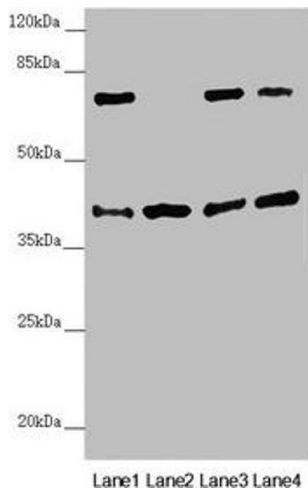
Storage: -20 °C,-80 °C

Storage Comment: Upon receipt, store at -20°C or -80°C. Avoid repeated freeze.



Immunohistochemistry

Image 1. Immunohistochemistry of paraffin-embedded human brain tissue using ABIN7157675 at dilution of 1:100



Western Blotting

Image 2. Western blot All lanes: DSN1 antibody at 2.19 μ g/mL Lane 1: Hela whole cell lysate Lane 2: Mouse skeletal muscle tissue Lane 3: Mouse lung tissue Lane 4: Mouse stomach tissue Secondary Goat polyclonal to rabbit IgG at 1/10000 dilution Predicted band size: 41, 33, 39, 28 kDa Observed band size: 41, 70 kDa