

Datasheet for ABIN7157681
anti-KNG1 antibody (AA 390-644)

3 Images

[Go to Product page](#)

Overview

Quantity:	100 µg
Target:	KNG1
Binding Specificity:	AA 390-644
Reactivity:	Human
Host:	Rabbit
Clonality:	Polyclonal
Conjugate:	This KNG1 antibody is un-conjugated
Application:	Western Blotting (WB), Immunohistochemistry (IHC), ELISA, Immunofluorescence (IF)

Product Details

Immunogen:	Recombinant Human Kininogen-1 protein (390-644AA)
Isotype:	IgG
Cross-Reactivity:	Human
Purification:	>95%, Protein G purified

Target Details

Target:	KNG1
Alternative Name:	KNG1 (KNG1 Products)
Background:	Background: Kininogens are inhibitors of thiol proteases, (2) HMW-kininogen plays an important role in blood coagulation by helping to position optimally prekallikrein and factor XI next to

Target Details

factor XII, (3) HMW-kininogen inhibits the thrombin- and plasmin-induced aggregation of thrombocytes, (4) the active peptide bradykinin that is released from HMW-kininogen shows a variety of physiological effects: (4A) influence in smooth muscle contraction, (4B) induction of hypotension, (4C) natriuresis and diuresis, (4D) decrease in blood glucose level, (4E) it is a mediator of inflammation and causes (4E1) increase in vascular permeability, (4E2) stimulation of nociceptors (4E3) release of other mediators of inflammation (e.g. prostaglandins), (4F) it has a cardioprotective effect (directly via bradykinin action, indirectly via endothelium-derived relaxing factor action), (5) LMW-kininogen inhibits the aggregation of thrombocytes, (6) LMW-kininogen is in contrast to HMW-kininogen not involved in blood clotting.

Aliases: Alpha-2-thiol proteinase inhibitor antibody, BDK antibody, BK antibody, Bradykinin antibody, Bradykinin included antibody, Fitzgerald factor antibody, FLAUJEAC FACTOR antibody, High molecular weight kininogen antibody, HMWK antibody, Ile-Ser-Bradykinin antibody, Kallidin I antibody, Kallidin II antibody, KNG antibody, KNG1 antibody, KNG1_HUMAN antibody, Low molecular weight growth-promoting factor antibody, WILLIAMS FACTOR antibody, Williams-Fitzgerald-Flaujeac factor antibody

UniProt: [P01042](#)

Pathways: [ACE Inhibitor Pathway](#), [Glycosaminoglycan Metabolic Process](#)

Application Details

Application Notes: Recommended dilution: WB:1:500-1:2000, IHC:1:20-1:200, IF:1:50-1:200,

Restrictions: For Research Use only

Handling

Format: Liquid

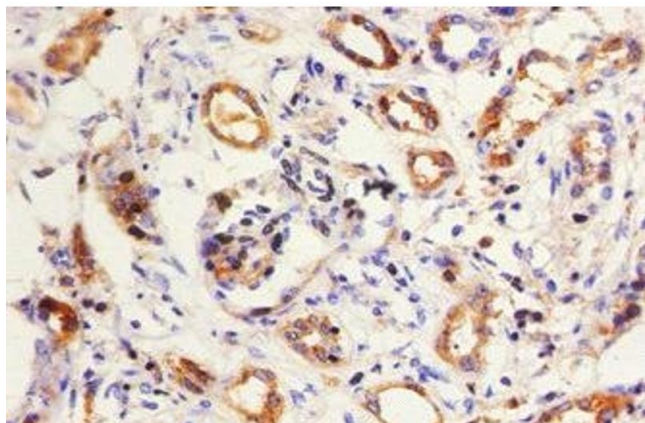
Buffer: Preservative: 0.03 % Proclin 300
Constituents: 50 % Glycerol, 0.01M PBS, PH 7.4

Preservative: ProClin

Precaution of Use: This product contains ProClin: a POISONOUS AND HAZARDOUS SUBSTANCE which should be handled by trained staff only.

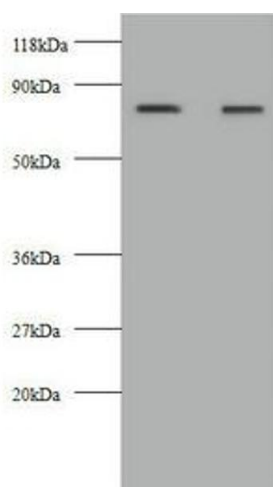
Storage: -20 °C,-80 °C

Storage Comment: Upon receipt, store at -20°C or -80°C. Avoid repeated freeze.



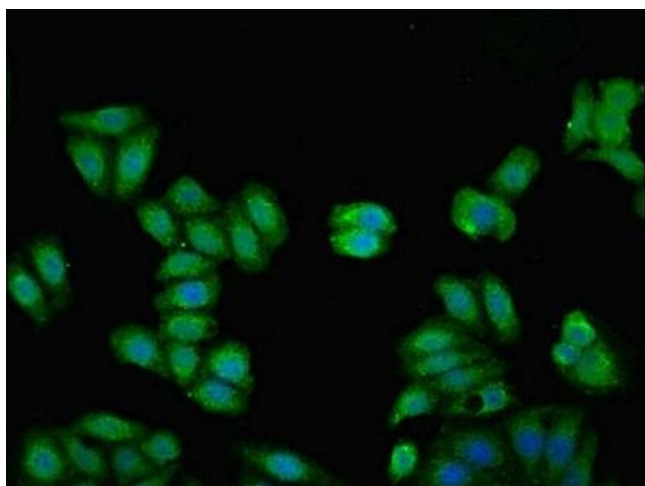
Immunohistochemistry

Image 1. Immunohistochemistry of paraffin-embedded human kidney tissue using ABIN7157681 at dilution of 1:50



Western Blotting

Image 2. Western blot All lanes: KNG1 antibody at 2 µg/mL
Lane 1: HepG2 whole cell lysate Lane 2: 293T whole cell lysate Secondary Goat polyclonal to rabbit IgG at 1/10000 dilution Predicted band size: 72, 48, 44 kDa Observed band size: 72 kDa



Immunofluorescence

Image 3. Immunofluorescent analysis of HepG2 cells using ABIN7157681 at dilution of 1:100 and Alexa Fluor 488-conjugated AffiniPure Goat Anti-Rabbit IgG(H+L)