

Datasheet for ABIN7157686

**anti-ANKRD15 antibody (AA 66-255)**[Go to Product page](#)**1** Image

## Overview

|                      |  |
|----------------------|--|
| Quantity:            | 100 µg                                 |
| Target:              | ANKRD15                                |
| Binding Specificity: | AA 66-255                              |
| Reactivity:          | Human                                  |
| Host:                | Rabbit                                 |
| Clonality:           | Polyclonal                             |
| Conjugate:           | This ANKRD15 antibody is un-conjugated |
| Application:         | ELISA, Immunohistochemistry (IHC)      |

## Product Details

|                   |  |
|-------------------|--|
| Immunogen:        | Recombinant Human KN motif and ankyrin repeat domain-containing protein 1 protein (66-255AA) |
| Isotype:          | IgG  |
| Cross-Reactivity: | Human  |
| Purification:     | >95%, Protein G purified   |

## Target Details

|                   |   |
|-------------------|---|
| Target:           | ANKRD15   |
| Alternative Name: | KANK1 ( <a href="#">ANKRD15 Products</a> )  |
| Background:       | Background: Involved in the control of cytoskeleton formation by regulating actin |

## Target Details

polymerization. Inhibits actin fiber formation and cell migration. Inhibits RhoA activity, the function involves phosphorylation through PI3K/Akt signaling and may depend on the competitive interaction with 14-3-3 adapter proteins to sequester them from active complexes. Inhibits the formation of lamellipodia but not of filopodia, the function may depend on the competitive interaction with BAIAP2 to block its association with activated RAC1. Inhibits fibronectin-mediated cell spreading, the function is partially mediated by BAIAP2. Inhibits neurite outgrowth. Involved in the establishment and persistence of cell polarity during directed cell movement in wound healing. In the nucleus, is involved in beta-catenin-dependent activation of transcription. Potential tumor suppressor for renal cell carcinoma.

Aliases: ANKRD 15 antibody, Ankyrin repeat domain 15 antibody, Ankyrin repeat domain containing protein 15 antibody, Ankyrin repeat domain-containing protein 15 antibody, DKFZp451G231 antibody, KANK antibody, KANK1 antibody, KANK1\_HUMAN antibody, KIAA0172 antibody, Kidney ankyrin repeat containing protein antibody, Kidney ankyrin repeat-containing protein antibody, KN motif and ankyrin repeat domain-containing protein 1 antibody, MGC43128 antibody

UniProt: [Q14678](#)

Pathways: [Regulation of Actin Filament Polymerization](#)

## Application Details

Application Notes: Recommended dilution: IHC:1:200-1:500,

Restrictions: For Research Use only

## Handling

Format: Liquid

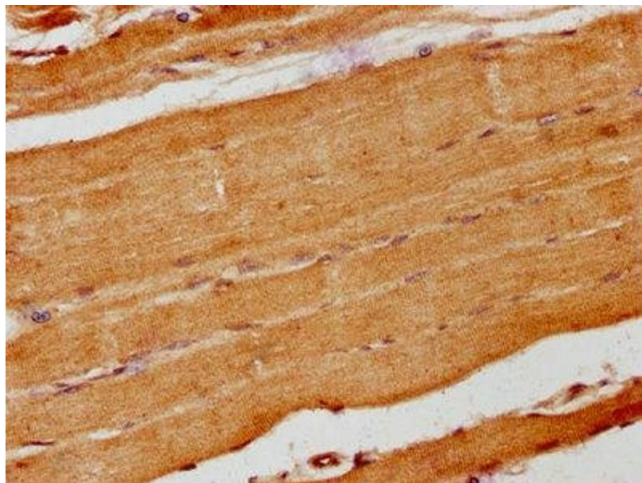
Buffer: Preservative: 0.03 % Proclin 300  
Constituents: 50 % Glycerol, 0.01M PBS, pH 7.4

Preservative: ProClin

Precaution of Use: This product contains ProClin: a POISONOUS AND HAZARDOUS SUBSTANCE which should be handled by trained staff only.

Storage: -20 °C,-80 °C

Storage Comment: Upon receipt, store at -20°C or -80°C. Avoid repeated freeze.



#### Immunohistochemistry

**Image 1.** IHC image of ABIN7157686 diluted at 1:200 and staining in paraffin-embedded human skeletal muscle tissue performed on a Leica Bond™ system. After dewaxing and hydration, antigen retrieval was mediated by high pressure in a citrate buffer (pH 6.0). Section was blocked with 10% normal goat serum 30min at RT. Then primary antibody (1% BSA) was incubated at 4°C overnight. The primary is detected by a biotinylated secondary antibody and visualized using an HRP conjugated SP system.