

Datasheet for ABIN7157703
anti-KLF1 antibody (AA 1-362)[Go to Product page](#)

1 Image

Overview

Quantity:	100 µg
Target:	KLF1
Binding Specificity:	AA 1-362
Reactivity:	Human
Host:	Rabbit
Clonality:	Polyclonal
Conjugate:	This KLF1 antibody is un-conjugated
Application:	ELISA, Immunofluorescence (IF)

Product Details

Immunogen:	Recombinant Human Krueppel-like factor 1 protein (1-362AA)
Isotype:	IgG
Cross-Reactivity:	Human
Purification:	>95%, Protein G purified

Target Details

Target:	KLF1
Alternative Name:	KLF1 (KLF1 Products)
Background:	Background: Transcription regulator of erythrocyte development that probably serves as a general switch factor during erythropoiesis. Is a dual regulator of fetal-to-adult globin switching.

Target Details

Binds to the CACCC box in the beta-globin gene promoter and acts as a preferential activator of this gene. Furthermore, it binds to the BCL11A promoter and activates expression of BCL11A, which in turn represses the HBG1 and HBG2 genes. This dual activity ensures that, in most adults, fetal hemoglobin levels are low. Able to activate CD44 and AQP1 promoters. When sumoylated, acts as a transcriptional repressor by promoting interaction with CDH2/MI2beta and also represses megakaryocytic differentiation.

Aliases: CDAN4 antibody, EKLF antibody, EKLF PEN antibody, Erythroid krueppel like transcription factor (EKLF) (Erythroid transcription factor) antibody, Erythroid krueppel-like transcription factor antibody, Erythroid Kruppel like factor antibody, Erythroid specific transcription factor EKLF antibody, HBFQTL6 antibody, Human erythroid-specific transcription factor EKLF mRNA complete cds antibody, INLU antibody, Klf1 antibody, KLF1_HUMAN antibody, Krueppel-like factor 1 antibody, Kruppel like factor 1 (erythroid) antibody

UniProt: [Q13351](#)

Application Details

Application Notes: Recommended dilution: IF:1:50-1:200,

Restrictions: For Research Use only

Handling

Format: Liquid

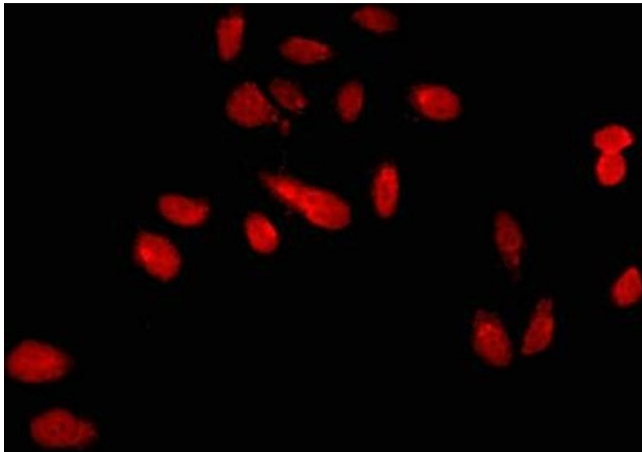
Buffer: Preservative: 0.03 % Proclin 300
Constituents: 50 % Glycerol, 0.01M PBS, PH 7.4

Preservative: ProClin

Precaution of Use: This product contains ProClin: a POISONOUS AND HAZARDOUS SUBSTANCE which should be handled by trained staff only.

Storage: -20 °C,-80 °C

Storage Comment: Upon receipt, store at -20°C or -80°C. Avoid repeated freeze.



Immunofluorescence

Image 1. Immunofluorescent analysis of HeLa cells using ABIN7157703 at dilution of 1:100 and Cy3-conjugated Goat Anti-Rabbit IgG