



Datasheet for ABIN7157708
anti-KLF11 antibody (AA 107-205)



[Go to Product page](#)

1 Image

Overview

Quantity:	100 µg
Target:	KLF11
Binding Specificity:	AA 107-205
Reactivity:	Human
Host:	Rabbit
Clonality:	Polyclonal
Conjugate:	This KLF11 antibody is un-conjugated
Application:	ELISA, Immunohistochemistry (IHC)

Product Details

Immunogen:	Recombinant Human Krueppel-like factor 11 protein (107-205AA)
Isotype:	IgG
Cross-Reactivity:	Human
Purification:	>95%, Protein G purified

Target Details

Target:	KLF11
Alternative Name:	KLF11 (KLF11 Products)
Background:	Background: Transcription factor (PubMed:9748269, PubMed:10207080). Activates the epsilon- and gamma-globin gene promoters and, to a much lower degree, the beta-globin gene and

Target Details

represses promoters containing SP1-like binding inhibiting cell growth (PubMed:9748269, PubMed:10207080, PubMed:16131492). Represses transcription of SMAD7 which enhances TGF-beta signaling (By similarity). Induces apoptosis (By similarity).

Aliases: 9830142A17 antibody, D12Ert427e antibody, FKLf antibody, FKLf1 antibody, Klf11 antibody, KLF11_HUMAN antibody, Krueppel like factor 11 antibody, Krueppel-like factor 11 antibody, Krueppel-like transcription factor 1 antibody, MODY7 antibody, Tcfcp2l2 antibody, TGFB Early Growth Response 2 antibody, TGFB-inducible early growth response protein 2 antibody, TGFB-inducible early growth response protein 2b antibody, TGFB-inducible early growth response protein 3 antibody, TIEG 2 antibody, TIEG-2 antibody, TIEG-3 antibody, Tieg2b antibody, Transforming Growth Factor Beta Inducible Early Growth Response 2 antibody, Transforming growth factor-beta-inducible early growth response protein 2 antibody, Transforming growth factor-beta-inducible early growth response protein 3 antibody

UniProt: [O14901](#)

Application Details

Application Notes: Recommended dilution: IHC:1:20-1:200,

Restrictions: For Research Use only

Handling

Format: Liquid

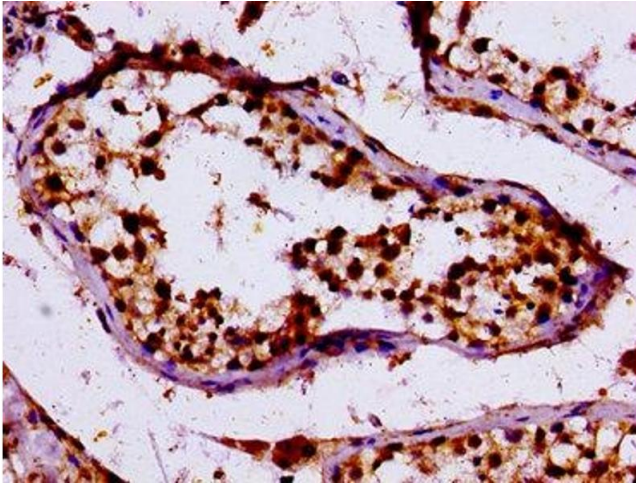
Buffer: Preservative: 0.03 % Proclin 300
Constituents: 50 % Glycerol, 0.01M PBS, pH 7.4

Preservative: ProClin

Precaution of Use: This product contains ProClin: a POISONOUS AND HAZARDOUS SUBSTANCE which should be handled by trained staff only.

Storage: -20 °C,-80 °C

Storage Comment: Upon receipt, store at -20°C or -80°C. Avoid repeated freeze.



Immunohistochemistry

Image 1. IHC image of ABIN7157708 diluted at 1:100 and staining in paraffin-embedded human testis tissue performed on a Leica Bond™ system. After dewaxing and hydration, antigen retrieval was mediated by high pressure in a citrate buffer (pH 6.0). Section was blocked with 10% normal goat serum 30min at RT. Then primary antibody (1% BSA) was incubated at 4°C overnight. The primary is detected by a biotinylated secondary antibody and visualized using an HRP conjugated SP system.