

Datasheet for ABIN7157720  
**anti-KLF15 antibody (AA 1-260)**[Go to Product page](#)

## 2 Images

## Overview

Quantity:	100 µL
Target:	KLF15
Binding Specificity:	AA 1-260
Reactivity:	Human
Host:	Rabbit
Clonality:	Polyclonal
Conjugate:	This KLF15 antibody is un-conjugated
Application:	ELISA, Immunohistochemistry (IHC)

## Product Details

Immunogen:	Recombinant Human Krueppel-like factor 15 protein (1-260AA)
Isotype:	IgG
Cross-Reactivity:	Human
Purification:	Antigen Affinity Purified

## Target Details

Target:	KLF15
Alternative Name:	KLF15 ( <a href="#">KLF15 Products</a> )
Background:	Background: Transcriptional regulator that binds to the GA element of the CLCNKA promoter. Binds to the KCNIP2 promoter and regulates KCNIP2 circadian expression in the heart (By

## Target Details

similarity). Is a repressor of CTGF expression, involved in the control of cardiac fibrosis. It is also involved in the control of cardiac hypertrophy acting through the inhibition of MEF2A and GATA4 (By similarity). Involved in podocyte differentiation (By similarity). Inhibits MYOCD activity. Is a negative regulator of TP53 acetylation. Inhibits NF-kappa-B activation through repression of EP300-dependent RELA acetylation.

Aliases: Kidney enriched Kruppel like factor antibody, Kidney-enriched krueppel-like factor antibody, KKLf antibody, KKLf protein antibody, KLF 15 antibody, KLF15 antibody, KLF15\_HUMAN antibody, Krueppel-like factor 15 antibody, Kruppel like factor 15 antibody

UniProt: [Q9UIH9](#)

## Application Details

Application Notes: Recommended dilution: IHC:1:20-1:200,

Restrictions: For Research Use only

## Handling

Format: Liquid

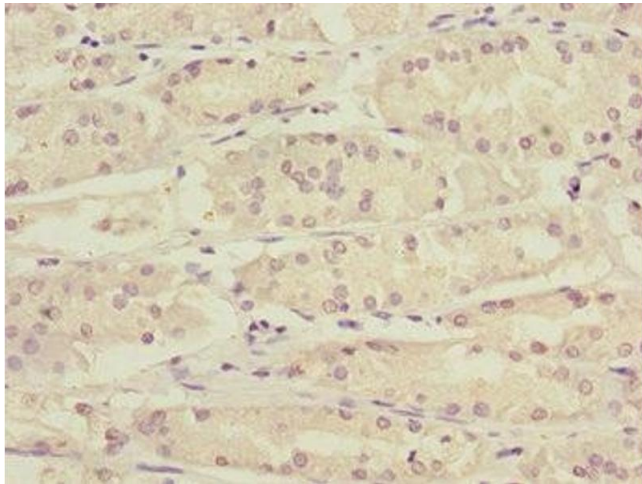
Buffer: PBS with 0.02 % sodium azide, 50 % glycerol, pH 7.3.

Preservative: Sodium azide

Precaution of Use: This product contains Sodium azide: a POISONOUS AND HAZARDOUS SUBSTANCE which should be handled by trained staff only.

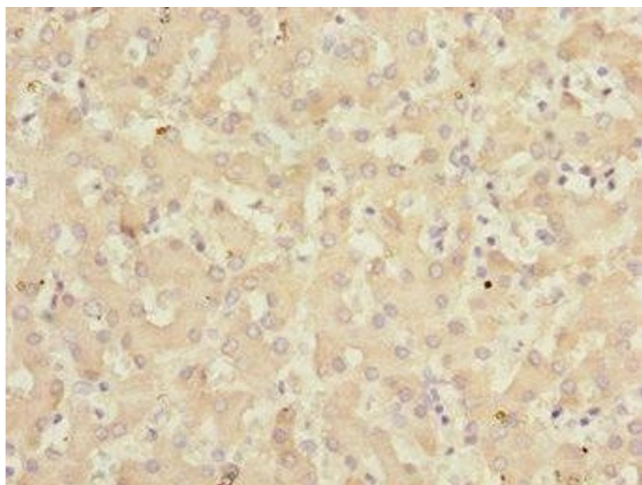
Storage: -20 °C,-80 °C

Storage Comment: Upon receipt, store at -20°C or -80°C. Avoid repeated freeze.



#### Immunohistochemistry

**Image 1.** Immunohistochemistry of paraffin-embedded human gastric cancer using ABIN7157720 at dilution of 1:100



#### Immunohistochemistry

**Image 2.** Immunohistochemistry of paraffin-embedded human liver tissue using ABIN7157720 at dilution of 1:100