



Datasheet for ABIN7157727
anti-KLF4 antibody (AA 30-230)



[Go to Product page](#)

3 Images

Overview

Quantity:	100 µL
Target:	KLF4
Binding Specificity:	AA 30-230
Reactivity:	Human
Host:	Rabbit
Clonality:	Polyclonal
Conjugate:	This KLF4 antibody is un-conjugated
Application:	Western Blotting (WB), ELISA, Immunohistochemistry (IHC)

Product Details

Immunogen:	Recombinant Human Krueppel-like factor 4 protein (30-230AA)
Isotype:	IgG
Cross-Reactivity:	Human
Purification:	Antigen Affinity Purified

Target Details

Target:	KLF4
Alternative Name:	KLF4 (KLF4 Products)
Background:	Background: Transcription factor, can act both as activator and as repressor. Binds the 5'-' CACCC-3' core sequence. Binds to the promoter region of its own gene and can activate its

Target Details

own transcription. Regulates the expression of key transcription factors during embryonic development. Plays an important role in maintaining embryonic stem cells, and in preventing their differentiation. Required for establishing the barrier function of the skin and for postnatal maturation and maintenance of the ocular surface. Involved in the differentiation of epithelial cells and may also function in skeletal and kidney development. Contributes to the down-regulation of p53/TP53 transcription.

Aliases: Endothelial Kruppel like zinc finger protein antibody, Epithelial zinc finger protein EZF antibody, EZF antibody, GKLf antibody, gut Kruppel-like factor antibody, Gut-enriched krueppel-like factor antibody, KLF antibody, KLF4 antibody, KLF4_HUMAN antibody, Krueppel-like factor 4 antibody, Kruppel like factor 4 (Epithelial zinc finger protein EZF) (Gut enriched Krueppel like factor) antibody, Kruppel like factor 4 (gut) antibody

UniProt: [O43474](#)

Pathways: [Peptide Hormone Metabolism](#), [Stem Cell Maintenance](#)

Application Details

Application Notes: Recommended dilution: WB:1:500-1:2000, IHC:1:20-1:200,

Restrictions: For Research Use only

Handling

Format: Liquid

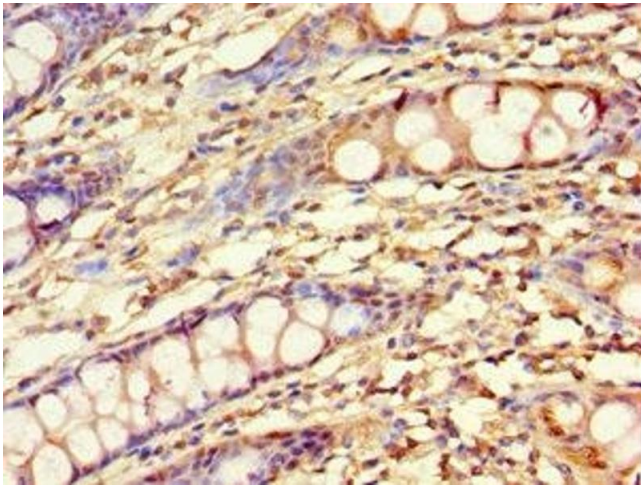
Buffer: PBS with 0.02 % sodium azide, 50 % glycerol, pH 7.3.

Preservative: Sodium azide

Precaution of Use: This product contains Sodium azide: a POISONOUS AND HAZARDOUS SUBSTANCE which should be handled by trained staff only.

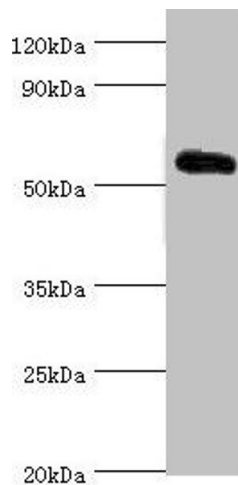
Storage: -20 °C,-80 °C

Storage Comment: Upon receipt, store at -20°C or -80°C. Avoid repeated freeze.



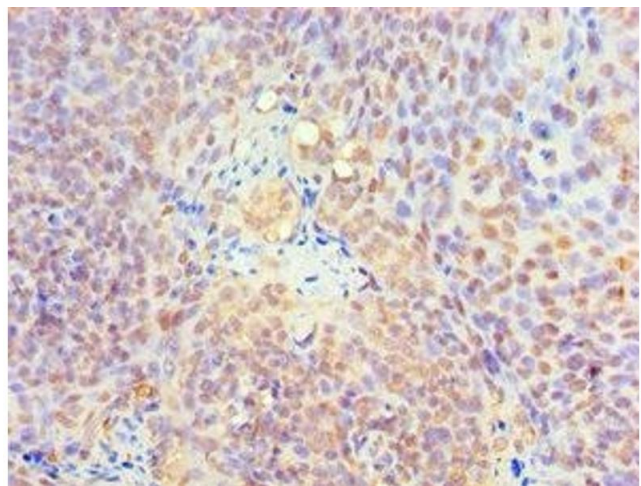
Immunohistochemistry

Image 1. Immunohistochemistry of paraffin-embedded human colon tissue using ABIN7157727 at dilution of 1:100



Western Blotting

Image 2. Western blot All lanes: Krueppel-like factor 4 antibody at 5 µg/mL + 293T whole cell lysate Secondary Goat polyclonal to rabbit IgG at 1/10000 dilution Predicted band size: 55, 52, 46, 13, 7 kDa Observed band size: 55 kDa



Immunohistochemistry

Image 3. Immunohistochemistry of paraffin-embedded human tonsil tissue using ABIN7157727 at dilution of 1:100