



[Go to Product page](#)

Datasheet for ABIN7157843
anti-GLO1 antibody (AA 1-184)

2 Images

Overview

Quantity:	100 µL
Target:	GLO1
Binding Specificity:	AA 1-184
Reactivity:	Human
Host:	Rabbit
Clonality:	Polyclonal
Conjugate:	This GLO1 antibody is un-conjugated
Application:	Western Blotting (WB), Immunohistochemistry (IHC), ELISA

Product Details

Immunogen:	Recombinant Human Lactoylglutathione lyase protein (1-184AA)
Isotype:	IgG
Cross-Reactivity:	Human
Purification:	Antigen Affinity Purified

Target Details

Target:	GLO1
Alternative Name:	GLO1 (GLO1 Products)
Background:	Background: Catalyzes the conversion of hemimercaptal, formed from methylglyoxal and glutathione, to S-lactoylglutathione. Involved in the regulation of TNF-induced transcriptional

Target Details

activity of NF-kappa-B. Required for normal osteoclastogenesis.

Aliases: Aldoketomutase antibody, glo1 antibody, GLOD1 antibody, Glx I antibody, GLYI antibody, glyoxalase domain containing 1 antibody, Glyoxalase I antibody, Ketone aldehyde mutase antibody, Ketone-aldehyde mutase antibody, Lactoyl glutathione lyase antibody, Lactoylglutathione lyase antibody, LGUL_HUMAN antibody, Methylglyoxalase antibody, S D lactoylglutathione methylglyoxal lyase antibody, S-D-lactoylglutathione methylglyoxal lyase antibody

UniProt: [Q04760](#)

Application Details

Application Notes: Recommended dilution: WB:1:200-1:1000, IHC:1:20-1:200,

Restrictions: For Research Use only

Handling

Format: Liquid

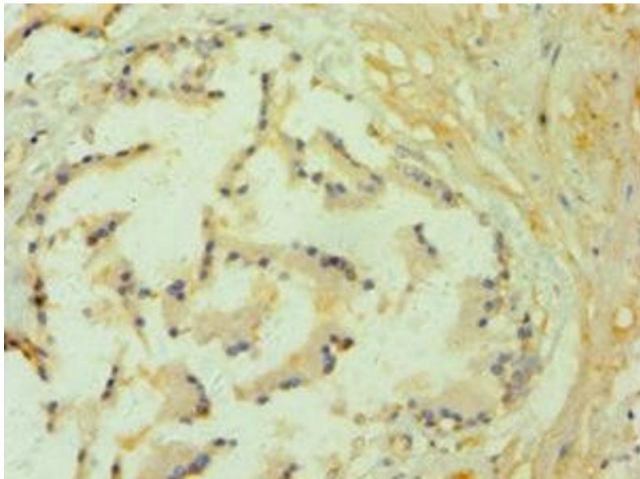
Buffer: PBS with 0.02 % sodium azide, 50 % glycerol, pH 7.3.

Preservative: Sodium azide

Precaution of Use: This product contains Sodium azide: a POISONOUS AND HAZARDOUS SUBSTANCE which should be handled by trained staff only.

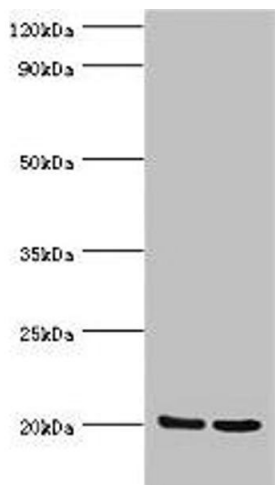
Storage: -20 °C,-80 °C

Storage Comment: Upon receipt, store at -20°C or -80°C. Avoid repeated freeze.



Immunohistochemistry

Image 1. Immunohistochemistry of paraffin-embedded human prostate tissue using ABIN7157843 at dilution of 1:100



Western Blotting

Image 2. Western blot All lanes: GLO1 antibody at 2 µg/mL
Lane 1: HepG2 whole cell lysate Lane 2: Hela whole cell lysate
Secondary Goat polyclonal to rabbit IgG at 1/10000 dilution
Predicted band size: 21, 20 kDa Observed band size: 21 kDa