

Datasheet for ABIN7157854  
**anti-Lamin B1 antibody (AA 385-552)**



[Go to Product page](#)

2 Images

## Overview

Quantity:	100 µg
Target:	Lamin B1 (LMNB1)
Binding Specificity:	AA 385-552
Reactivity:	Human
Host:	Rabbit
Clonality:	Polyclonal
Conjugate:	This Lamin B1 antibody is un-conjugated
Application:	ELISA, Immunohistochemistry (IHC)

## Product Details

Immunogen:	Recombinant Human Lamin-B1 protein (385-552AA)
Isotype:	IgG
Cross-Reactivity:	Human
Purification:	>95%, Protein G purified

## Target Details

Target:	Lamin B1 (LMNB1)
Alternative Name:	LMNB1 ( <a href="#">LMNB1 Products</a> )
Background:	Background: Lamins are components of the nuclear lamina, a fibrous layer on the nucleoplasmic side of the inner nuclear membrane, which is thought to provide a framework for

## Target Details

the nuclear envelope and may also interact with chromatin.

Aliases: ADLD antibody, lamin B1 antibody, Lamin-B1 antibody, LMN antibody, LMN2 antibody, LMNB antibody, Lmnb1 antibody, LMNB1\_HUMAN antibody, MGC111419 antibody, OTTHUMP00000159218 antibody

UniProt: [P20700](#)

Pathways: [Apoptosis, Caspase Cascade in Apoptosis](#)

## Application Details

Application Notes: Recommended dilution: IHC:1:20-1:200,

Restrictions: For Research Use only

## Handling

Format: Liquid

Buffer: Preservative: 0.03 % Proclin 300  
Constituents: 50 % Glycerol, 0.01M PBS, PH 7.4

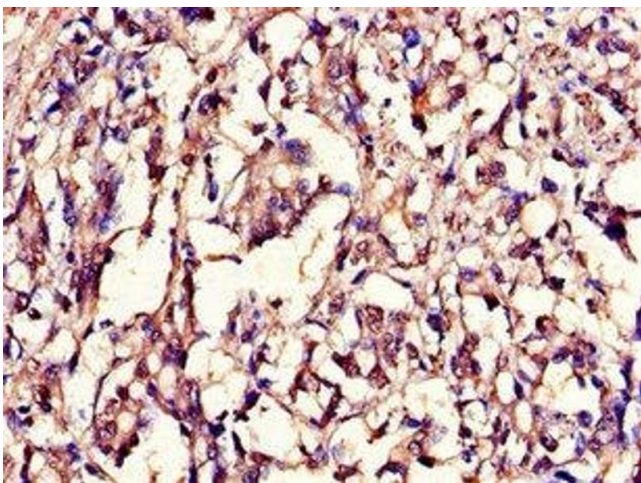
Preservative: ProClin

Precaution of Use: This product contains ProClin: a POISONOUS AND HAZARDOUS SUBSTANCE which should be handled by trained staff only.

Storage: -20 °C,-80 °C

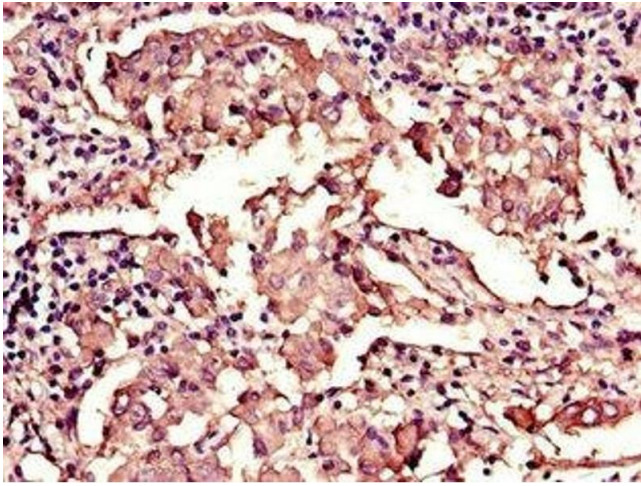
Storage Comment: Upon receipt, store at -20°C or -80°C. Avoid repeated freeze.

## Images



### Immunohistochemistry

**Image 1.** Immunohistochemistry of paraffin-embedded human gastric cancer using ABIN7157854 at dilution of 1:100



### Immunohistochemistry

**Image 2.** Immunohistochemistry of paraffin-embedded human lung cancer using ABIN7157854 at dilution of 1:100