

Datasheet for ABIN7157862  
**anti-Laminin antibody (AA 974-1162)**[Go to Product page](#)

## 2 Images

## Overview

|                      |  |
|----------------------|--|
| Quantity:            | 100 µg   |
| Target:              | Laminin (LAMA2)  |
| Binding Specificity: | AA 974-1162  |
| Reactivity:          | Human  |
| Host:                | Rabbit   |
| Clonality:           | Polyclonal   |
| Conjugate:           | This Laminin antibody is un-conjugated                     |
| Application:         | ELISA, Immunohistochemistry (IHC), Immunofluorescence (IF) |

## Product Details

|                   |  |
|-------------------|--|
| Immunogen:        | Recombinant Human Laminin subunit alpha-2 protein (974-1162AA) |
| Isotype:          | IgG  |
| Cross-Reactivity: | Human  |
| Purification:     | >95%, Protein G purified                                       |

## Target Details

|                   |   |
|-------------------|---|
| Target:           | Laminin (LAMA2)   |
| Alternative Name: | LAMA2 ( <a href="#">LAMA2 Products</a> )  |
| Background:       | Background: Binding to cells via a high affinity receptor, laminin is thought to mediate the attachment, migration and organization of cells into tissues during embryonic development by |

## Target Details

interacting with other extracellular matrix components.

Aliases: LAMA 2 antibody, LAMA2 antibody, LAMA2\_HUMAN antibody, Laminin alpha 2 (merosin congenital muscular dystrophy) antibody, Laminin alpha 2 antibody, Laminin alpha 2 chain antibody, Laminin alpha 2 subunit antibody, Laminin M antibody, Laminin M chain antibody, Laminin subunit alpha-2 antibody, Laminin-12 subunit alpha antibody, Laminin-2 subunit alpha antibody, Laminin-4 subunit alpha antibody, LAMM antibody, Merosin heavy chain antibody

UniProt: [P24043](#)

## Application Details

Application Notes: Recommended dilution: IHC:1:200-1:500, IF:1:50-1:200,

Restrictions: For Research Use only

## Handling

Format: Liquid

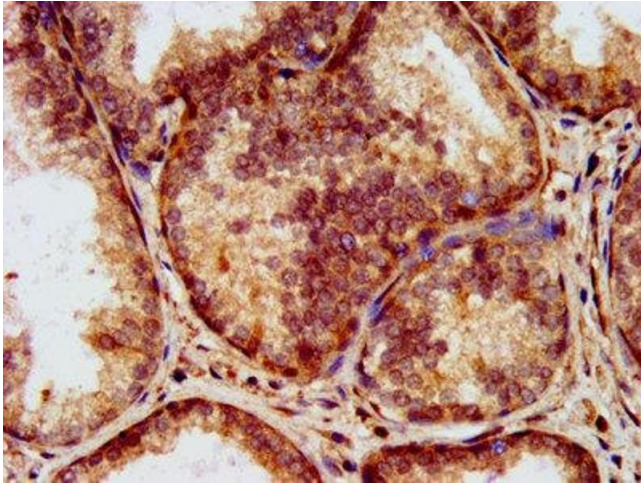
Buffer: Preservative: 0.03 % Proclin 300  
Constituents: 50 % Glycerol, 0.01M PBS, pH 7.4

Preservative: ProClin

Precaution of Use: This product contains ProClin: a POISONOUS AND HAZARDOUS SUBSTANCE which should be handled by trained staff only.

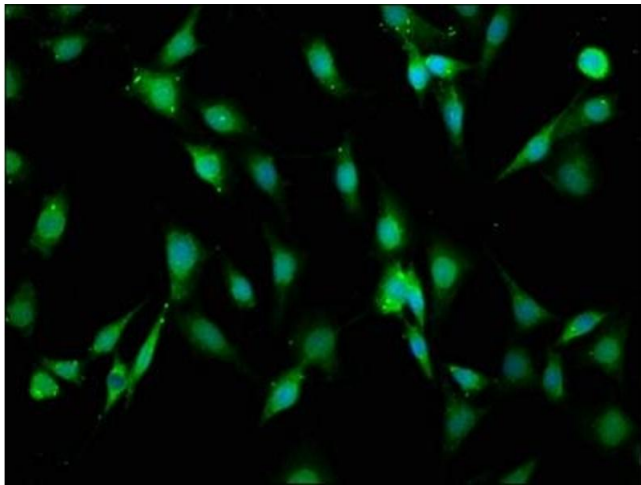
Storage: -20 °C, -80 °C

Storage Comment: Upon receipt, store at -20°C or -80°C. Avoid repeated freeze.



#### Immunohistochemistry

**Image 1.** IHC image of ABIN7157862 diluted at 1:200 and staining in paraffin-embedded human prostate cancer performed on a Leica Bond™ system. After dewaxing and hydration, antigen retrieval was mediated by high pressure in a citrate buffer (pH 6.0). Section was blocked with 10% normal goat serum 30min at RT. Then primary antibody (1% BSA) was incubated at 4°C overnight. The primary is detected by a biotinylated secondary antibody and visualized using an HRP conjugated SP system.



#### Immunofluorescence

**Image 2.** Immunofluorescence staining of NIH/3T3 cells with ABIN7157862 at 1:66, counter-stained with DAPI. The cells were fixed in 4% formaldehyde, permeabilized using 0.2% Triton X-100 and blocked in 10% normal Goat Serum. The cells were then incubated with the antibody overnight at 4°C. The secondary antibody was Alexa Fluor 488-conjugated AffiniPure Goat Anti-Rabbit IgG(H+L).