

Datasheet for ABIN7157866
anti-LAMA3 antibody (AA 1570-1796)[Go to Product page](#)

1 Image

Overview

Quantity:	100 µg
Target:	LAMA3
Binding Specificity:	AA 1570-1796
Reactivity:	Human
Host:	Rabbit
Clonality:	Polyclonal
Conjugate:	This LAMA3 antibody is un-conjugated
Application:	ELISA, Immunohistochemistry (IHC)

Product Details

Immunogen:	Recombinant Human Laminin subunit alpha-3 protein (1570-1796AA)
Isotype:	IgG
Cross-Reactivity:	Human
Purification:	>95%, Protein G purified

Target Details

Target:	LAMA3
Alternative Name:	LAMA3 (LAMA3 Products)
Background:	Background: Binding to cells via a high affinity receptor, laminin is thought to mediate the attachment, migration and organization of cells into tissues during embryonic development by

Target Details

interacting with other extracellular matrix components.

Aliases: E170 antibody, Epiligrin 170 kDa subunit antibody, Epiligrin subunit alpha antibody, Kalinin B1 chain antibody, Kalinin subunit alpha antibody, LAMA3 antibody, LAMA3_HUMAN antibody, LAMB3 antibody, LAMC2 antibody, Laminin gamma 2 antibody, Laminin 5 beta 3 antibody, Laminin 5 gamma 2 subunit antibody, Laminin beta 3 antibody, Laminin subunit alpha-3 antibody, Laminin subunit beta 3 antibody, Laminin subunit gamma 2 antibody, Laminin-5 subunit alpha antibody, Laminin-6 subunit alpha antibody, Laminin-7 subunit alpha antibody, Nicein subunit alpha antibody

UniProt: [Q16787](#)

Application Details

Application Notes: Recommended dilution: IHC:1:20-1:200,

Restrictions: For Research Use only

Handling

Format: Liquid

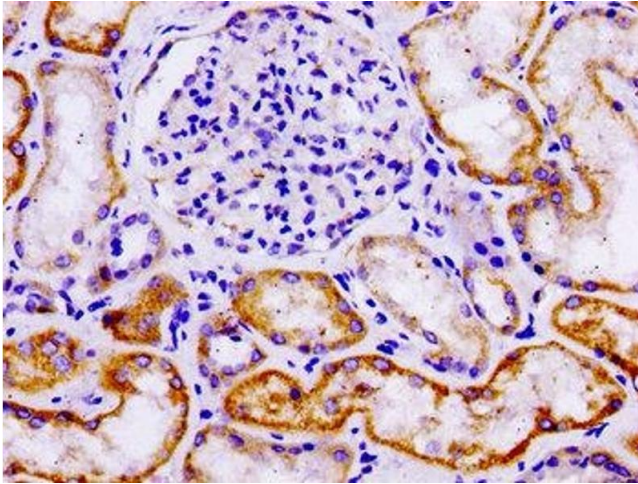
Buffer: Preservative: 0.03 % Proclin 300
Constituents: 50 % Glycerol, 0.01M PBS, pH 7.4

Preservative: ProClin

Precaution of Use: This product contains ProClin: a POISONOUS AND HAZARDOUS SUBSTANCE which should be handled by trained staff only.

Storage: -20 °C,-80 °C

Storage Comment: Upon receipt, store at -20°C or -80°C. Avoid repeated freeze.



Immunohistochemistry

Image 1. IHC image of ABIN7157866 diluted at 1:100 and staining in paraffin-embedded human kidney tissue performed on a Leica Bond™ system. After dewaxing and hydration, antigen retrieval was mediated by high pressure in a citrate buffer (pH 6.0). Section was blocked with 10% normal goat serum 30min at RT. Then primary antibody (1% BSA) was incubated at 4°C overnight. The primary is detected by a biotinylated secondary antibody and visualized using an HRP conjugated SP system.