

Datasheet for ABIN7157870
anti-LAMa4 antibody (AA 1593-1823)

2 Images

[Go to Product page](#)

Overview

Quantity:	100 µL
Target:	LAMa4
Binding Specificity:	AA 1593-1823
Reactivity:	Human
Host:	Rabbit
Clonality:	Polyclonal
Conjugate:	This LAMa4 antibody is un-conjugated
Application:	Western Blotting (WB), ELISA, Immunofluorescence (IF)

Product Details

Immunogen:	Recombinant Human Laminin subunit alpha-4 protein (1593-1823AA)
Isotype:	IgG
Cross-Reactivity:	Human
Purification:	Antigen Affinity Purified

Target Details

Target:	LAMa4
Alternative Name:	LAMA4 (LAMa4 Products)
Background:	Background: Binding to cells via a high affinity receptor, laminin is thought to mediate the attachment, migration and organization of cells into tissues during embryonic development by

Target Details

interacting with other extracellular matrix components.

Aliases: CMD1JJ antibody, DKFZp686D23145 antibody, LAMA3 antibody, LAMA3, formerly antibody, LAMA4 1 antibody, LAMA4 antibody, LAMA4*-1 antibody, LAMA4_HUMAN antibody, Laminin alpha 4 antibody, Laminin alpha 4 chain antibody, Laminin subunit alpha 4 precursor antibody, Laminin subunit alpha-4 antibody, Laminin-14 subunit alpha antibody, Laminin-8 subunit alpha antibody, Laminin-9 subunit alpha antibody

UniProt: [Q16363](#)

Pathways: [Brown Fat Cell Differentiation](#)

Application Details

Application Notes: Recommended dilution: WB:1:500-1:2000, IF:1:50-1:200,

Restrictions: For Research Use only

Handling

Format: Liquid

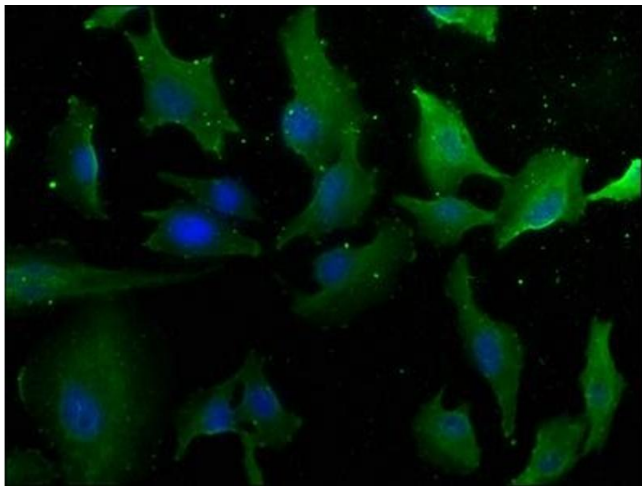
Buffer: Preservative: 0.03 % Proclin 300
Constituents: 50 % Glycerol, 0.01M PBS, pH 7.4

Preservative: ProClin

Precaution of Use: This product contains ProClin: a POISONOUS AND HAZARDOUS SUBSTANCE which should be handled by trained staff only.

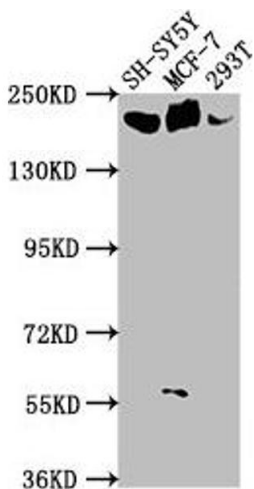
Storage: -20 °C,-80 °C

Storage Comment: Upon receipt, store at -20°C or -80°C. Avoid repeated freeze.



Immunofluorescence

Image 1. Immunofluorescence staining of U251 cells with ABIN7157870 at 1:50, counter-stained with DAPI. The cells were fixed in 4 % formaldehyde, permeabilized using 0.2 % Triton X-100 and blocked in 10 % normal Goat Serum. The cells were then incubated with the antibody overnight at 4 °C. The secondary antibody was Alexa Fluor 488-conjugated AffiniPure Goat Anti-Rabbit IgG(H+L).



Western Blotting

Image 2. Western Blot Positive WB detected in: SH-SY5Y whole cell lysate, MCF-7 whole cell lysate, 293T whole cell lysate. All lanes: LAMA4 antibody at 1:1000 Secondary Goat polyclonal to rabbit IgG at 1/50000 dilution. Predicted band size: 203, 202, 13 kDa. Observed band size: 203 kDa.