



[Go to Product page](#)

Datasheet for ABIN7157878

## anti-Laminin beta 1 antibody (AA 523-661)

### 1 Image

#### Overview

Quantity:	100 µg
Target:	Laminin beta 1 (LAMB1)
Binding Specificity:	AA 523-661
Reactivity:	Human
Host:	Rabbit
Clonality:	Polyclonal
Conjugate:	This Laminin beta 1 antibody is un-conjugated
Application:	Immunohistochemistry (IHC), ELISA

#### Product Details

Immunogen:	Recombinant Human Laminin subunit beta-1 protein (523-661AA)
Isotype:	IgG
Cross-Reactivity:	Human
Purification:	>95%, Protein G purified

#### Target Details

Target:	Laminin beta 1 (LAMB1)
Alternative Name:	LAMB1 ( <a href="#">LAMB1 Products</a> )
Background:	Background: Binding to cells via a high affinity receptor, laminin is thought to mediate the attachment, migration and organization of cells into tissues during embryonic development by

## Target Details

---

interacting with other extracellular matrix components. Involved in the organization of the laminar architecture of cerebral cortex. It is probably required for the integrity of the basement membrane/glia limitans that serves as an anchor point for the endfeet of radial glial cells and as a physical barrier to migrating neurons. Radial glial cells play a central role in cerebral cortical development, where they act both as the proliferative unit of the cerebral cortex and a scaffold for neurons migrating toward the pial surface.

Aliases: CLM antibody, Cutis laxa with marfanoid phenotype antibody, LAM B1 antibody, LAMB 1 antibody, LAMB1 antibody, LAMB1\_HUMAN antibody, Laminin B1 antibody, Laminin B1 chain antibody, Laminin beta 1 chain antibody, Laminin beta 1 chain precursor antibody, Laminin beta1 antibody, Laminin subunit beta 1 antibody, Laminin subunit beta-1 antibody, Laminin-1 subunit beta antibody, Laminin-10 subunit beta antibody, Laminin-12 subunit beta antibody, Laminin-2 subunit beta antibody, Laminin-6 subunit beta antibody, Laminin-8 subunit beta antibody, LIS5 antibody, MGC142015 antibody

---

UniProt: [P07942](#)

## Application Details

---

Application Notes: Recommended dilution: IHC:1:20-1:200,

Restrictions: For Research Use only

## Handling

---

Format: Liquid

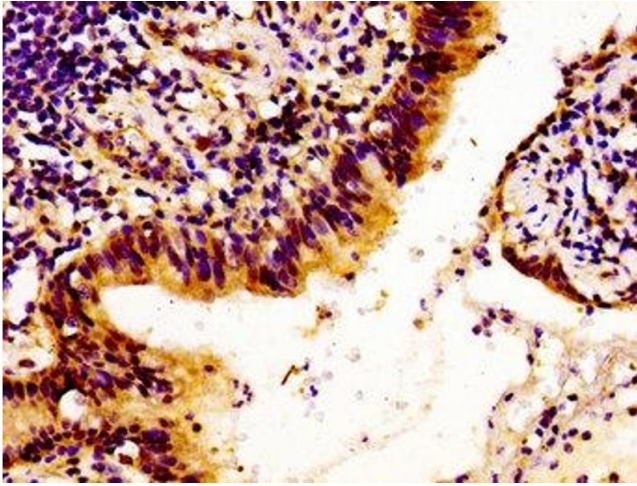
Buffer: Preservative: 0.03 % Proclin 300  
Constituents: 50 % Glycerol, 0.01M PBS, pH 7.4

Preservative: ProClin

Precaution of Use: This product contains ProClin: a POISONOUS AND HAZARDOUS SUBSTANCE which should be handled by trained staff only.

Storage: -20 °C,-80 °C

Storage Comment: Upon receipt, store at -20°C or -80°C. Avoid repeated freeze.



### Immunohistochemistry

**Image 1.** Immunohistochemistry of paraffin-embedded human lung cancer using ABIN7157878 at dilution of 1:100