



[Go to Product page](#)

Datasheet for ABIN7157886

anti-Laminin beta 3 antibody (AA 256-397)

2 Images

Overview

Quantity:	100 µg
Target:	Laminin beta 3 (LAMB3)
Binding Specificity:	AA 256-397
Reactivity:	Human
Host:	Rabbit
Clonality:	Polyclonal
Conjugate:	This Laminin beta 3 antibody is un-conjugated
Application:	Immunohistochemistry (IHC), ELISA

Product Details

Immunogen:	Recombinant Human Laminin subunit beta-3 protein (256-397AA)
Isotype:	IgG
Cross-Reactivity:	Human
Purification:	>95%, Protein G purified

Target Details

Target:	Laminin beta 3 (LAMB3)
Alternative Name:	LAMB3 (LAMB3 Products)
Background:	Background: Binding to cells via a high affinity receptor, laminin is thought to mediate the attachment, migration and organization of cells into tissues during embryonic development by

Target Details

interacting with other extracellular matrix components.

Aliases: BM600 125KDA antibody, Epiligrin subunit bata antibody, FLJ99565 antibody, Kalinin B1 chain antibody, Kalinin subunit beta antibody, LAM5 antibody, LAMB3 antibody, LAMB3_HUMAN antibody, Laminin B1k chain antibody, Laminin subunit beta-3 antibody, Laminin-5 subunit beta antibody, LAMNB1 antibody, Nicein subunit beta antibody

UniProt: [Q13751](#)

Pathways: [Brown Fat Cell Differentiation](#)

Application Details

Application Notes: Recommended dilution: IHC:1:200-1:500,

Restrictions: For Research Use only

Handling

Format: Liquid

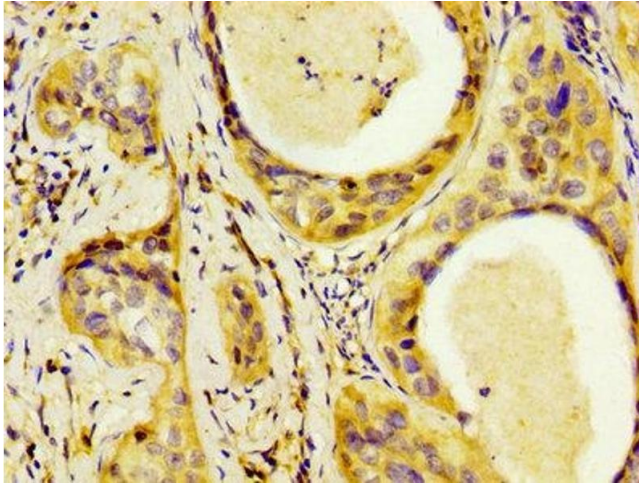
Buffer: Preservative: 0.03 % Proclin 300
Constituents: 50 % Glycerol, 0.01M PBS, pH 7.4

Preservative: ProClin

Precaution of Use: This product contains ProClin: a POISONOUS AND HAZARDOUS SUBSTANCE which should be handled by trained staff only.

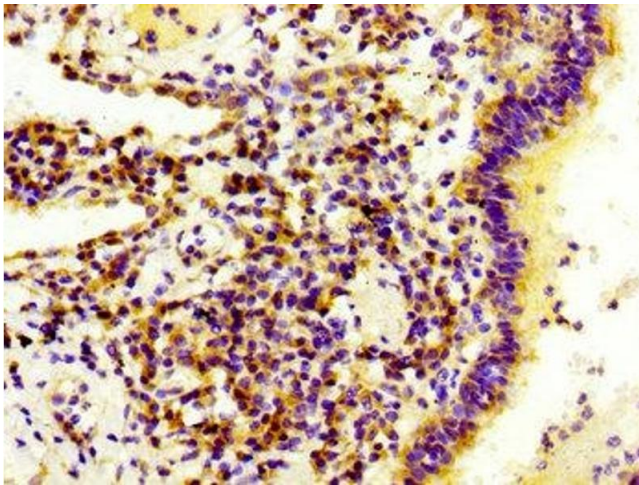
Storage: -20 °C,-80 °C

Storage Comment: Upon receipt, store at -20°C or -80°C. Avoid repeated freeze.



Immunohistochemistry

Image 1. IHC image of ABIN7157886 diluted at 1:300 and staining in paraffin-embedded human cervical cancer performed on a Leica Bond™ system. After dewaxing and hydration, antigen retrieval was mediated by high pressure in a citrate buffer (pH 6.0). Section was blocked with 10% normal goat serum 30min at RT. Then primary antibody (1% BSA) was incubated at 4°C overnight. The primary is detected by a biotinylated secondary antibody and visualized using an HRP conjugated SP system.



Immunohistochemistry

Image 2. IHC image of ABIN7157886 diluted at 1:300 and staining in paraffin-embedded human lung cancer performed on a Leica Bond™ system. After dewaxing and hydration, antigen retrieval was mediated by high pressure in a citrate buffer (pH 6.0). Section was blocked with 10% normal goat serum 30min at RT. Then primary antibody (1% BSA) was incubated at 4°C overnight. The primary is detected by a biotinylated secondary antibody and visualized using an HRP conjugated SP system.