



[Go to Product page](#)

Datasheet for ABIN7157898
anti-LAMC2 antibody (AA 417-588)

3 Images

Overview

Quantity:	100 µg
Target:	LAMC2
Binding Specificity:	AA 417-588
Reactivity:	Human
Host:	Rabbit
Clonality:	Polyclonal
Conjugate:	This LAMC2 antibody is un-conjugated
Application:	Western Blotting (WB), Immunohistochemistry (IHC), ELISA

Product Details

Immunogen:	Recombinant Human Laminin subunit gamma-2 protein (417-588AA)
Isotype:	IgG
Cross-Reactivity:	Human
Purification:	>95%, Protein G purified

Target Details

Target:	LAMC2
Alternative Name:	LAMC2 (LAMC2 Products)
Background:	Background: Binding to cells via a high affinity receptor, laminin is thought to mediate the attachment, migration and organization of cells into tissues during embryonic development by

Target Details

interacting with other extracellular matrix components. Ladsin exerts cell-scattering activity toward a wide variety of cells, including epithelial, endothelial, and fibroblastic cells.

Aliases: 3918 antibody, B2T antibody, BM600 antibody, Cell-scattering factor 140 kDa subunit antibody, CSF 140 kDa subunit antibody, CSF antibody, EBR2 antibody, EBR2A antibody, Epiligrin subunit gamma antibody, Kalinin subunit gamma antibody, Kalinin/nicein/epiligrin 100 kDa subunit antibody, Ladsin 140 kDa subunit antibody, LAMB2T antibody, LAMC2 antibody, LAMC2_HUMAN antibody, Laminin 5 gamma 2 subunit antibody, Laminin B2t chain antibody, Laminin gamma 2 antibody, laminin gamma 2 chain antibody, Laminin subunit gamma-2 antibody, Laminin-5 subunit gamma antibody, LAMNB2 antibody, Large adhesive scatter factor 140 kDa subunit antibody, MGC138491 antibody, MGC141938 antibody, Nicein subunit gamma antibody, NICEIN-100KDA antibody

UniProt: [Q13753](#)

Application Details

Application Notes: Recommended dilution: WB:1:500-1:5000, IHC:1:200-1:500,

Restrictions: For Research Use only

Handling

Format: Liquid

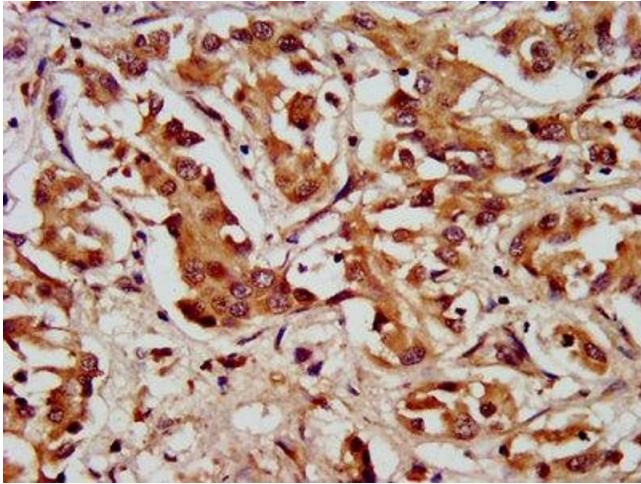
Buffer: Preservative: 0.03 % Proclin 300
Constituents: 50 % Glycerol, 0.01M PBS, pH 7.4

Preservative: ProClin

Precaution of Use: This product contains ProClin: a POISONOUS AND HAZARDOUS SUBSTANCE which should be handled by trained staff only.

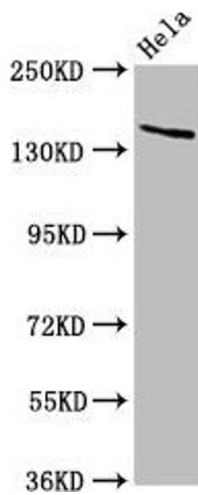
Storage: -20 °C, -80 °C

Storage Comment: Upon receipt, store at -20°C or -80°C. Avoid repeated freeze.



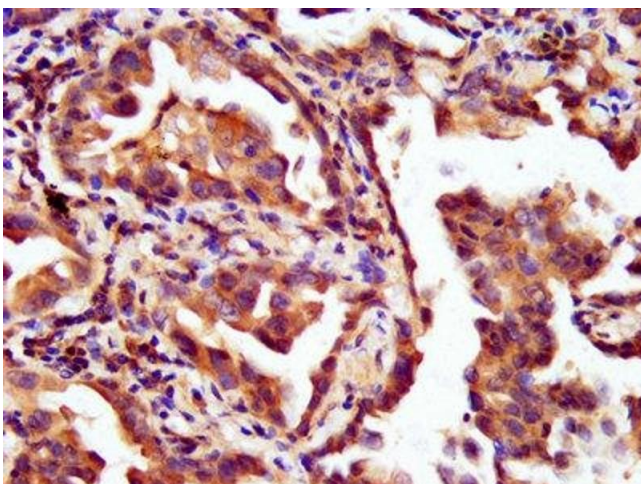
Immunohistochemistry

Image 1. IHC image of ABIN7157898 diluted at 1:200 and staining in paraffin-embedded human liver cancer performed on a Leica Bond™ system. After dewaxing and hydration, antigen retrieval was mediated by high pressure in a citrate buffer (pH 6.0). Section was blocked with 10 % normal goat serum 30 min at RT. Then primary antibody (1 % BSA) was incubated at 4 °C overnight. The primary is detected by a biotinylated secondary antibody and visualized using an HRP conjugated SP system.



Western Blotting

Image 2. Western Blot Positive WB detected in: HeLa whole cell lysate All lanes: LAMC2 antibody at 5 µg/mL Secondary Goat polyclonal to rabbit IgG at 1/50000 dilution Predicted band size: 131, 122 kDa Observed band size: 140 kDa



Immunohistochemistry

Image 3. IHC image of ABIN7157898 diluted at 1:200 and staining in paraffin-embedded human lung cancer performed on a Leica Bond™ system. After dewaxing and hydration, antigen retrieval was mediated by high pressure in a citrate buffer (pH 6.0). Section was blocked with 10 % normal goat serum 30 min at RT. Then primary antibody (1 % BSA) was incubated at 4 °C overnight. The primary is detected by a biotinylated secondary antibody and visualized using an HRP conjugated SP system.