

Datasheet for ABIN7157914  
**anti-LSS antibody (AA 1-300)**



[Go to Product page](#)

2 Images

### Overview

Quantity:	100 µL
Target:	LSS
Binding Specificity:	AA 1-300
Reactivity:	Human
Host:	Rabbit
Clonality:	Polyclonal
Conjugate:	This LSS antibody is un-conjugated
Application:	Immunohistochemistry (IHC), ELISA

### Product Details

Immunogen:	Recombinant Human Lanosterol synthase protein (1-300AA)
Isotype:	IgG
Cross-Reactivity:	Human
Purification:	Antigen Affinity Purified

### Target Details

Target:	LSS
Alternative Name:	LSS ( <a href="#">LSS Products</a> )
Background:	Background: Catalyzes the cyclization of (S)-2,3 oxidosqualene to lanosterol, a reaction that forms the sterol nucleus. Through the production of lanosterol may regulate lens protein

## Target Details

aggregation and increase transparency.

Aliases: LSS antibody, OSClanosterol synthase antibody, EC 5.4.99.7 antibody, 2,3-epoxysqualene-lanosterol cyclase antibody, Oxidosqualene-lanosterol cyclase antibody, OSC antibody, hOSC antibody

UniProt: [P48449](#)

## Application Details

Application Notes: Recommended dilution: IHC:1:20-1:200,

Restrictions: For Research Use only

## Handling

Format: Liquid

Buffer: PBS with 0.02 % sodium azide, 50 % glycerol, pH 7.3.

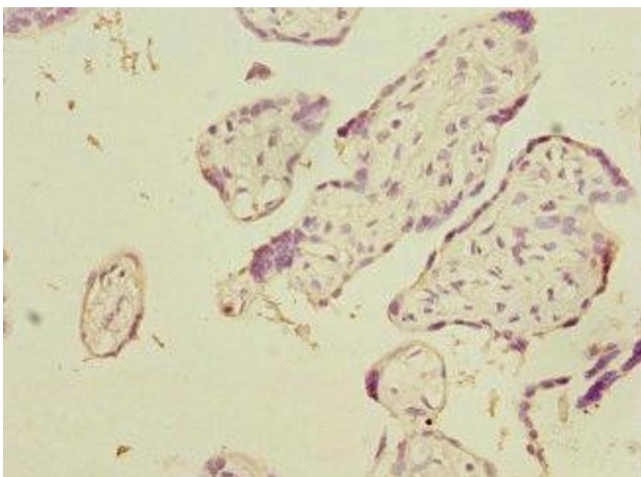
Preservative: Sodium azide

Precaution of Use: This product contains Sodium azide: a POISONOUS AND HAZARDOUS SUBSTANCE which should be handled by trained staff only.

Storage: -20 °C,-80 °C

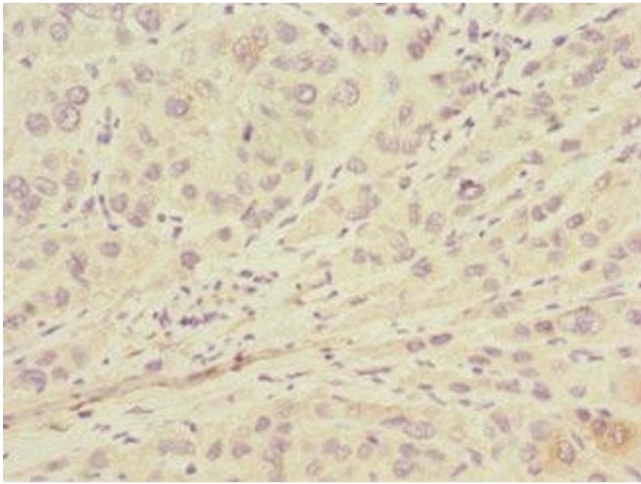
Storage Comment: Upon receipt, store at -20°C or -80°C. Avoid repeated freeze.

## Images



### Immunohistochemistry

**Image 1.** Immunohistochemistry of paraffin-embedded human placenta tissue using ABIN7157914 at dilution of 1:100



### Immunohistochemistry

**Image 2.** Immunohistochemistry of paraffin-embedded human liver cancer using ABIN7157914 at dilution of 1:100