



[Go to Product page](#)

Datasheet for ABIN7157925  
**anti-LCE2A antibody (AA 1-106)**

1 Image

Overview

Quantity:	100 µg
Target:	LCE2A
Binding Specificity:	AA 1-106
Reactivity:	Human
Host:	Rabbit
Clonality:	Polyclonal
Conjugate:	This LCE2A antibody is un-conjugated
Application:	ELISA, Immunohistochemistry (IHC)

Product Details

Immunogen:	Recombinant Human Late cornified envelope protein 2A protein (1-106AA)
Isotype:	IgG
Cross-Reactivity:	Human
Purification:	>95%, Protein G purified

Target Details

Target:	LCE2A
Alternative Name:	LCE2A ( <a href="#">LCE2A Products</a> )
Background:	Background: Precursors of the cornified envelope of the stratum corneum. Aliases: LCE2A antibody, LEP9Late cornified envelope protein 2A antibody, Late envelope

## Target Details

protein 9 antibody

UniProt: [Q5TA79](#)

## Application Details

Application Notes: Recommended dilution: IHC:1:20-1:200,

Restrictions: For Research Use only

## Handling

Format: Liquid

Buffer: Preservative: 0.03 % Proclin 300  
Constituents: 50 % Glycerol, 0.01M PBS, PH 7.4

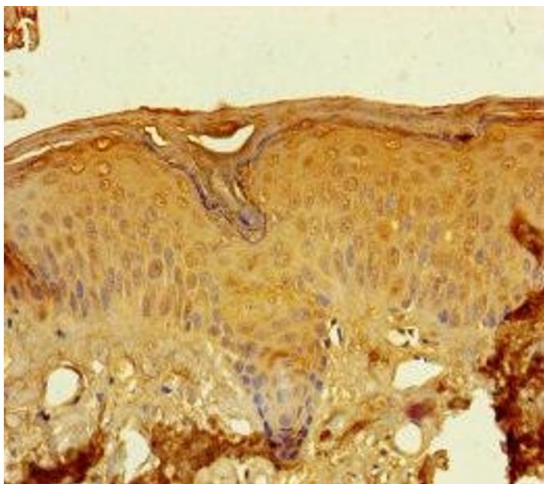
Preservative: ProClin

Precaution of Use: This product contains ProClin: a POISONOUS AND HAZARDOUS SUBSTANCE which should be handled by trained staff only.

Storage: -20 °C,-80 °C

Storage Comment: Upon receipt, store at -20°C or -80°C. Avoid repeated freeze.

## Images



### Immunohistochemistry

**Image 1.** Immunohistochemistry of paraffin-embedded human skin tissue using ABIN7157925 at dilution of 1:100