



Datasheet for ABIN7157929
anti-LCE3C antibody (AA 1-94)



[Go to Product page](#)

1 Image

Overview

Quantity:	100 µg
Target:	LCE3C (SPRL3A)
Binding Specificity:	AA 1-94
Reactivity:	Human
Host:	Rabbit
Clonality:	Polyclonal
Conjugate:	This LCE3C antibody is un-conjugated
Application:	ELISA, Immunofluorescence (IF)

Product Details

Immunogen:	Recombinant Human Late cornified envelope protein 3C protein (1-94AA)
Isotype:	IgG
Cross-Reactivity:	Human
Purification:	>95%, Protein G purified

Target Details

Target:	LCE3C (SPRL3A)
Alternative Name:	LCE3C (SPRL3A Products)
Background:	Background: Precursors of the cornified envelope of the stratum corneum. Aliases: LCE3C antibody, LEP15 antibody, SPRL3A Late cornified envelope protein 3C antibody,

Target Details

Late envelope protein 15 antibody, Small proline-rich-like epidermal differentiation complex protein 3A antibody

UniProt: [Q5T5A8](#)

Application Details

Application Notes: Recommended dilution: IF:1:20-1:200,

Restrictions: For Research Use only

Handling

Format: Liquid

Buffer: Preservative: 0.03 % Proclin 300
Constituents: 50 % Glycerol, 0.01M PBS, pH 7.4

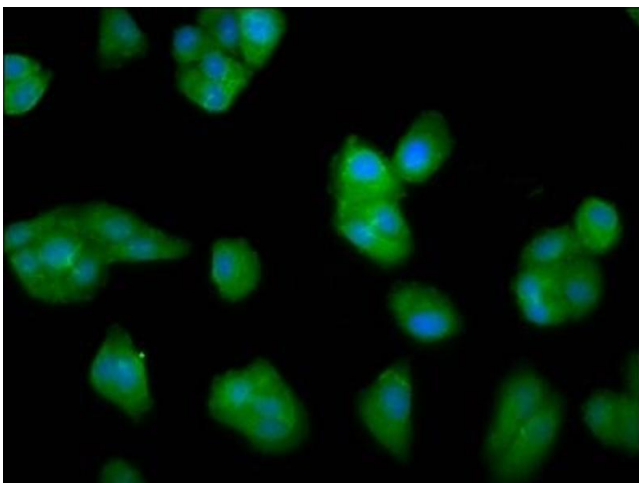
Preservative: ProClin

Precaution of Use: This product contains ProClin: a POISONOUS AND HAZARDOUS SUBSTANCE which should be handled by trained staff only.

Storage: -20 °C,-80 °C

Storage Comment: Upon receipt, store at -20°C or -80°C. Avoid repeated freeze.

Images



Immunofluorescence

Image 1. Immunofluorescence staining of HepG2 cells with ABIN7157929 at 1:33, counter-stained with DAPI. The cells were fixed in 4% formaldehyde, permeabilized using 0.2% Triton X-100 and blocked in 10% normal Goat Serum. The cells were then incubated with the antibody overnight at 4°C. The secondary antibody was Alexa Fluor 488-conjugated AffiniPure Goat Anti-Rabbit IgG(H+L).