



[Go to Product page](#)

Datasheet for ABIN7157958
anti-LCA5 antibody (AA 101-400)

1 Image

Overview

Quantity:	100 µg
Target:	LCA5
Binding Specificity:	AA 101-400
Reactivity:	Human
Host:	Rabbit
Clonality:	Polyclonal
Conjugate:	This LCA5 antibody is un-conjugated
Application:	ELISA, Western Blotting (WB)

Product Details

Immunogen:	Recombinant Human Lebercilin protein (101-400AA)
Isotype:	IgG
Cross-Reactivity:	Human, Mouse
Purification:	>95%, Protein G purified

Target Details

Target:	LCA5
Alternative Name:	LCA5 (LCA5 Products)
Background:	Background: Might be involved in minus end-directed microtubule transport. Aliases: LCA5 antibody, C6orf152Lebercilin antibody, Leber congenital amaurosis 5 protein

Target Details

antibody

UniProt: [Q86VQ0](#)

Application Details

Application Notes: Recommended dilution: WB:1:1000-1:5000,

Restrictions: For Research Use only

Handling

Format: Liquid

Buffer: Preservative: 0.03 % Proclin 300
Constituents: 50 % Glycerol, 0.01M PBS, PH 7.4

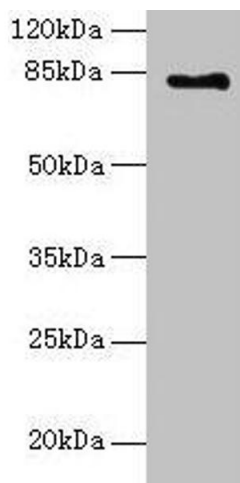
Preservative: ProClin

Precaution of Use: This product contains ProClin: a POISONOUS AND HAZARDOUS SUBSTANCE which should be handled by trained staff only.

Storage: -20 °C,-80 °C

Storage Comment: Upon receipt, store at -20°C or -80°C. Avoid repeated freeze.

Images



Western Blotting

Image 1. Western blot All lanes: LCA5 antibody at 18 µg/mL + Mouse kidney tissue Secondary Goat polyclonal to rabbit IgG at 1/10000 dilution Predicted band size: 81 kDa Observed band size: 81 kDa