

Datasheet for ABIN7157997  
**anti-LLGL1 antibody (AA 953-1056)**[Go to Product page](#)

## 2 Images

## Overview

Quantity:	100 µL
Target:	LLGL1
Binding Specificity:	AA 953-1056
Reactivity:	Human
Host:	Rabbit
Clonality:	Polyclonal
Conjugate:	This LLGL1 antibody is un-conjugated
Application:	ELISA, Immunohistochemistry (IHC), Immunofluorescence (IF)

## Product Details

Immunogen:	Recombinant Human Lethal (2) giant larvae protein homolog 1 protein (953-1056AA)
Isotype:	IgG
Cross-Reactivity:	Human
Purification:	>95%, Protein G purified

## Target Details

Target:	LLGL1
Alternative Name:	LLGL1 ( <a href="#">LLGL1 Products</a> )
Background:	Background: Cortical cytoskeleton protein found in a complex involved in maintaining cell polarity and epithelial integrity. Involved in the regulation of mitotic spindle orientation,

## Target Details

proliferation, differentiation and tissue organization of neuroepithelial cells. Involved in axonogenesis through RAB10 activation thereby regulating vesicular membrane trafficking toward the axonal plasma membrane.

Aliases: DLG4 antibody, DLG4, formerly antibody, Hugl 1 antibody, HUGL antibody, Hugl-1 antibody, HUGL1 antibody, Human homolog to the D-Igl gene protein antibody, L2GL1\_HUMAN antibody, Lethal giant larvae homolog 1 (Drosophila) antibody, Lethal giant larvae homolog 1 antibody, Lethal(2) giant larvae protein homolog 1 antibody, LLGL antibody, LIgl1 antibody, Ly 49G2 antibody, Ly49G2 antibody, Mgl1 antibody, Mlgl antibody

UniProt: [Q15334](#)

Pathways: [WNT Signaling](#)

## Application Details

Application Notes: Recommended dilution: IHC:1:20-1:200, IF:1:20-1:200,

Restrictions: For Research Use only

## Handling

Format: Liquid

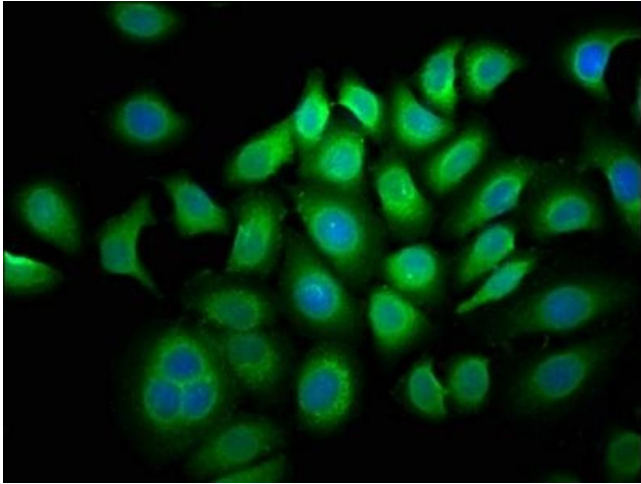
Buffer: Preservative: 0.03 % Proclin 300  
Constituents: 50 % Glycerol, 0.01M PBS, pH 7.4

Preservative: ProClin

Precaution of Use: This product contains ProClin: a POISONOUS AND HAZARDOUS SUBSTANCE which should be handled by trained staff only.

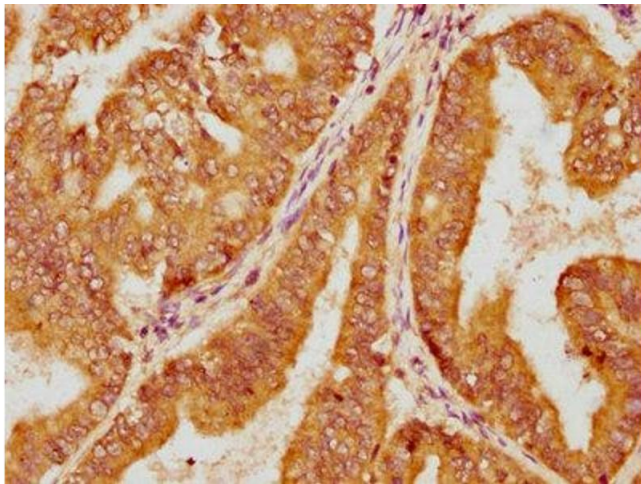
Storage: -20 °C, -80 °C

Storage Comment: Upon receipt, store at -20°C or -80°C. Avoid repeated freeze.



#### Immunofluorescence

**Image 1.** Immunofluorescence staining of A549 cells with ABIN7157997 at 1:33, counter-stained with DAPI. The cells were fixed in 4 % formaldehyde, permeabilized using 0.2 % Triton X-100 and blocked in 10 % normal Goat Serum. The cells were then incubated with the antibody overnight at 4 °C. The secondary antibody was Alexa Fluor 488-conjugated AffiniPure Goat Anti-Rabbit IgG(H+L).



#### Immunohistochemistry

**Image 2.** IHC image of ABIN7157997 diluted at 1:100 and staining in paraffin-embedded human endometrial cancer performed on a Leica Bond™ system. After dewaxing and hydration, antigen retrieval was mediated by high pressure in a citrate buffer (pH 6.0). Section was blocked with 10 % normal goat serum 30 min at RT. Then primary antibody (1 % BSA) was incubated at 4 °C overnight. The primary is detected by a biotinylated secondary antibody and visualized using an HRP conjugated SP system.