



[Go to Product page](#)

Datasheet for ABIN7158001  
**anti-LLGL2 antibody (AA 251-505)**

1 Image

### Overview

Quantity:	100 µg
Target:	LLGL2
Binding Specificity:	AA 251-505
Reactivity:	Human
Host:	Rabbit
Clonality:	Polyclonal
Application:	ELISA, Immunofluorescence (IF)

### Product Details

Immunogen:	Recombinant Human Lethal(2) giant larvae protein homolog 2 protein (251-505AA)
Isotype:	IgG
Cross-Reactivity:	Human
Purification:	>95%, Protein G purified

### Target Details

Target:	LLGL2
Alternative Name:	LLGL2 ( <a href="#">LLGL2 Products</a> )
Background:	<p>Background: Part of a complex with GPSM2/LGN, PRKCI/aPKC and PARD6B/Par-6, which may ensure the correct organization and orientation of bipolar spindles for normal cell division. This complex plays roles in the initial phase of the establishment of epithelial cell polarity.</p> <p>Aliases: HGL antibody, Human giant larvae homolog antibody, L2GL2 antibody, L2GL2_HUMAN</p>

## Target Details

antibody, Lethal 2 giant larvae protein homolog 2 antibody, Lethal giant larvae homolog 2 antibody, Lethal(2) giant larvae protein homolog 2 antibody, LGL2 antibody, LLGL2 antibody

UniProt: [Q6P1M3](#)

Pathways: [WNT Signaling](#)

## Application Details

Application Notes: Recommended dilution: IF:1:50-1:200,

Restrictions: For Research Use only

## Handling

Format: Liquid

Buffer: Preservative: 0.03 % Proclin 300  
Constituents: 50 % Glycerol, 0.01M PBS, pH 7.4

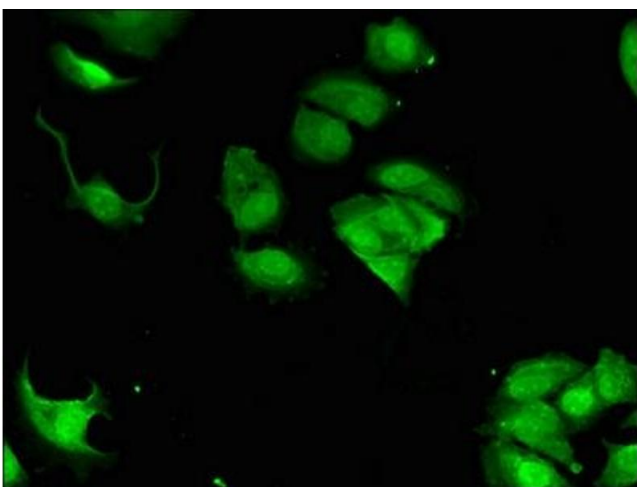
Preservative: ProClin

Precaution of Use: This product contains ProClin: a POISONOUS AND HAZARDOUS SUBSTANCE which should be handled by trained staff only.

Storage: -20 °C,-80 °C

Storage Comment: Upon receipt, store at -20°C or -80°C. Avoid repeated freeze.

## Images



### Immunofluorescence

**Image 1.** Immunofluorescent analysis of MCF-7 cells using ABIN7158001 at dilution of 1:100 and Alexa Fluor 488-conjugated AffiniPure Goat Anti-Rabbit IgG(H+L)