

Datasheet for ABIN7158026  
**anti-LZTS1 antibody (AA 47-212)**

## 2 Images

[Go to Product page](#)

## Overview

Quantity:	100 µg
Target:	LZTS1
Binding Specificity:	AA 47-212
Reactivity:	Human
Host:	Rabbit
Clonality:	Polyclonal
Conjugate:	This LZTS1 antibody is un-conjugated
Application:	ELISA, Immunohistochemistry (IHC), Immunofluorescence (IF)

## Product Details

Immunogen:	Recombinant Human Leucine zipper putative tumor suppressor 1 protein (47-212AA)
Isotype:	IgG
Cross-Reactivity:	Human
Purification:	>95%, Protein G purified

## Target Details

Target:	LZTS1
Alternative Name:	LZTS1 ( <a href="#">LZTS1 Products</a> )
Background:	Background: Involved in the regulation of cell growth. May stabilize the active CDC2-cyclin B1 complex and thereby contribute to the regulation of the cell cycle and the prevention of

## Target Details

uncontrolled cell proliferation. May act as a tumor suppressor.

Aliases: F37 antibody, F37/esophageal cancer related gene coding leucine zipper motif antibody, F37/esophageal cancer-related gene-coding leucine-zipper motif antibody, Fez1 antibody, Leucine zipper putative tumor suppressor 1 antibody, Lzts1 antibody, LZTS1\_HUMAN antibody, Psdzip70 antibody

UniProt: [Q9Y250](#)

Pathways: [Synaptic Membrane](#)

## Application Details

Application Notes: Recommended dilution: IHC:1:500-1:1000, IF:1:50-1:200,

Restrictions: For Research Use only

## Handling

Format: Liquid

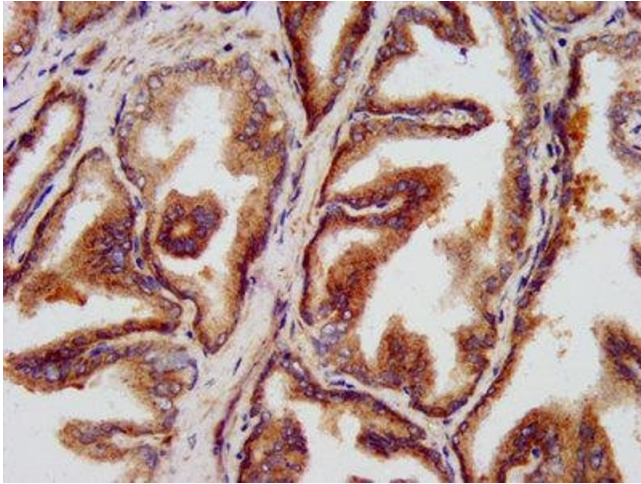
Buffer: Preservative: 0.03 % Proclin 300  
Constituents: 50 % Glycerol, 0.01M PBS, pH 7.4

Preservative: ProClin

Precaution of Use: This product contains ProClin: a POISONOUS AND HAZARDOUS SUBSTANCE which should be handled by trained staff only.

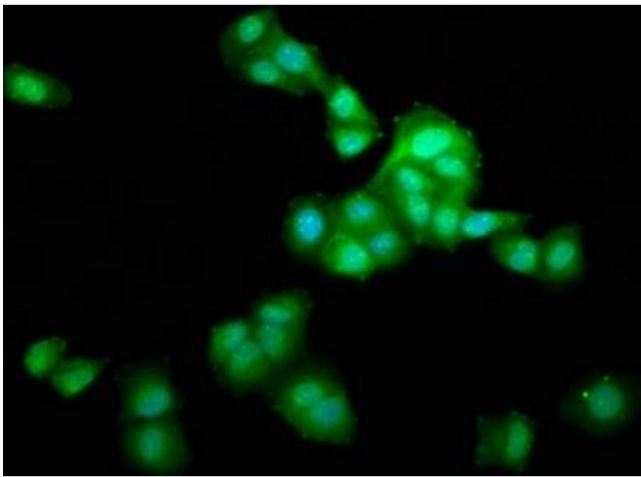
Storage: -20 °C, -80 °C

Storage Comment: Upon receipt, store at -20°C or -80°C. Avoid repeated freeze.



#### Immunohistochemistry

**Image 1.** IHC image of ABIN7158026 diluted at 1:500 and staining in paraffin-embedded human prostate tissue performed on a Leica Bond<sup>TM</sup> system. After dewaxing and hydration, antigen retrieval was mediated by high pressure in a citrate buffer (pH 6.0). Section was blocked with 10% normal goat serum 30min at RT. Then primary antibody (1% BSA) was incubated at 4°C overnight. The primary is detected by a biotinylated secondary antibody and visualized using an HRP conjugated SP system.



#### Immunofluorescence

**Image 2.** Immunofluorescence staining of HepG2 cells with ABIN7158026 at 1:166, counter-stained with DAPI. The cells were fixed in 4% formaldehyde, permeabilized using 0.2% Triton X-100 and blocked in 10% normal Goat Serum. The cells were then incubated with the antibody overnight at 4°C. The secondary antibody was Alexa Fluor 488-conjugated AffiniPure Goat Anti-Rabbit IgG(H+L).