

Datasheet for ABIN7158045  
**anti-LRPPRC antibody (AA 901-1036)**



[Go to Product page](#)

5 Images

## Overview

Quantity:	100 µg
Target:	LRPPRC
Binding Specificity:	AA 901-1036
Reactivity:	Human
Host:	Rabbit
Clonality:	Polyclonal
Conjugate:	This LRPPRC antibody is un-conjugated
Application:	Western Blotting (WB), Immunohistochemistry (IHC), ELISA, Immunofluorescence (IF), Immunoprecipitation (IP)

## Product Details

Immunogen:	Recombinant Human Leucine-rich PPR motif-containing protein, mitochondrial protein (901-1036AA)
Isotype:	IgG
Cross-Reactivity:	Human
Purification:	>95%, Protein G purified

## Target Details

Target:	LRPPRC
Alternative Name:	LRPPRC ( <a href="#">LRPPRC Products</a> )

## Target Details

Background:	<p>Background: May play a role in RNA metabolism in both nuclei and mitochondria. In the nucleus binds to HNRPA1-associated poly(A) mRNAs and is part of nmRNP complexes at late stages of mRNA maturation which are possibly associated with nuclear mRNA export. May bind mature mRNA in the nucleus outer membrane. In mitochondria binds to poly(A) mRNA. Plays a role in translation or stability of mitochondrially encoded cytochrome c oxidase (COX) subunits. May be involved in transcription regulation. Cooperates with PPARGC1A to regulate certain mitochondrially encoded genes and gluconeogenic genes and may regulate docking of PPARGC1A to transcription factors. Seems to be involved in the transcription regulation of the multidrug-related genes MDR1 and MVP. Part of a nuclear factor that binds to the invMED1 element of MDR1 and MVP gene promoters. Binds single-stranded DNA (By similarity).</p> <p>Aliases: 130 kDa leucine-rich protein antibody, gp130 antibody, Leucine-rich PPR motif-containing protein antibody, Leucine-rich PPR-motif containing protein antibody, LPPRC_HUMAN antibody, LRP 130 antibody, Irpprc antibody, mitochondrial antibody</p>
-------------	--

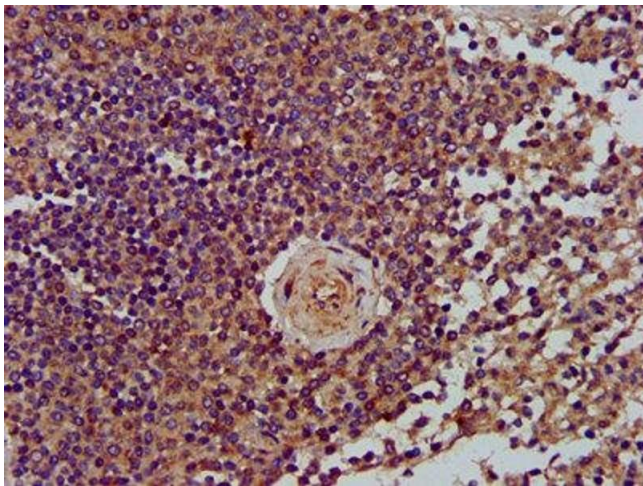
UniProt: [P42704](#)

## Application Details

Application Notes:	Recommended dilution: WB:1:500-1:5000, IHC:1:200-1:500, IF:1:50-1:200, IP:1:200-1:2000,
Restrictions:	For Research Use only

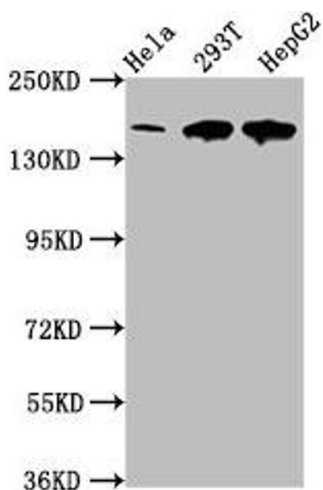
## Handling

Format:	Liquid
Buffer:	Preservative: 0.03 % Proclin 300 Constituents: 50 % Glycerol, 0.01M PBS, pH 7.4
Preservative:	ProClin
Precaution of Use:	This product contains ProClin: a POISONOUS AND HAZARDOUS SUBSTANCE which should be handled by trained staff only.
Storage:	-20 °C,-80 °C
Storage Comment:	Upon receipt, store at -20°C or -80°C. Avoid repeated freeze.



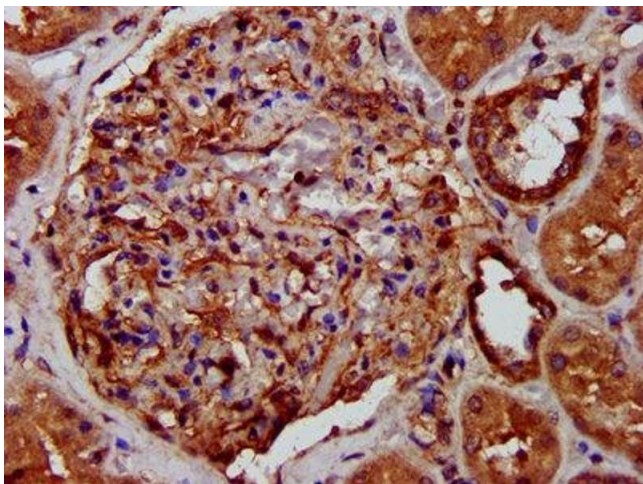
#### Immunohistochemistry

**Image 1.** IHC image of ABIN7158045 diluted at 1:400 and staining in paraffin-embedded human spleen tissue performed on a Leica Bond™ system. After dewaxing and hydration, antigen retrieval was mediated by high pressure in a citrate buffer (pH 6.0). Section was blocked with 10% normal goat serum 30min at RT. Then primary antibody (1% BSA) was incubated at 4°C overnight. The primary is detected by a biotinylated secondary antibody and visualized using an HRP conjugated SP system.



#### Western Blotting

**Image 2.** Western Blot Positive WB detected in: HeLa whole cell lysate, 293T whole cell lysate, HepG2 whole cell lysate All lanes: LRPPRC antibody at 4 µg/mL Secondary Goat polyclonal to rabbit IgG at 1/50000 dilution Predicted band size: 158 kDa Observed band size: 158 kDa



#### Immunohistochemistry

**Image 3.** IHC image of ABIN7158045 diluted at 1:400 and staining in paraffin-embedded human kidney tissue performed on a Leica Bond™ system. After dewaxing and hydration, antigen retrieval was mediated by high pressure in a citrate buffer (pH 6.0). Section was blocked with 10% normal goat serum 30min at RT. Then primary antibody (1% BSA) was incubated at 4°C overnight. The primary is detected by a biotinylated secondary antibody and visualized using an HRP conjugated SP system.

Please check the [product details page](#) for more images. Overall 5 images are available for ABIN7158045.