



Datasheet for ABIN7158058
anti-LRTM1 antibody (AA 1-212)



[Go to Product page](#)

3 Images

Overview

| | |
|----------------------|---|
| Quantity: | 100 µg |
| Target: | LRTM1 |
| Binding Specificity: | AA 1-212 |
| Reactivity: | Human |
| Host: | Rabbit |
| Clonality: | Polyclonal |
| Application: | ELISA, Immunohistochemistry (IHC), Western Blotting (WB), Immunofluorescence (IF) |

Product Details

| | |
|-------------------|---|
| Immunogen: | Recombinant Human Leucine-rich repeat and transmembrane domain-containing protein 1 protein (1-212AA) |
| Isotype: | IgG |
| Cross-Reactivity: | Human |
| Purification: | Antigen Affinity Purified |

Target Details

| | |
|-------------------|---|
| Target: | LRTM1 |
| Alternative Name: | LRTM1 (LRTM1 Products) |
| Background: | HT017 antibody, Leucine rich repeats and transmembrane domains 1 antibody, Leucine-rich repeat and transmembrane domain-containing protein 1 antibody, Lrtm1 antibody, LRTM1_HUMAN antibody |

Target Details

UniProt: [Q9HBL6](#)

Application Details

Application Notes: Recommended dilution: WB:1:1000-1:5000, IHC:1:20-1:200, IF:1:10-1:100,

Restrictions: For Research Use only

Handling

Format: Liquid

Buffer: Preservative: 0.03 % Proclin 300
Constituents: 50 % Glycerol, 0.01M PBS, PH 7.4

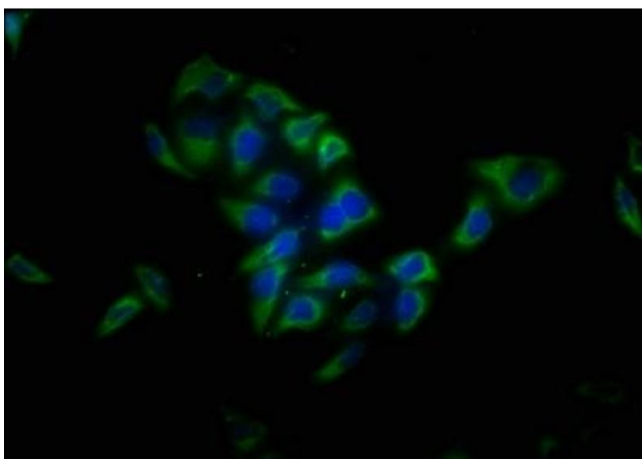
Preservative: ProClin

Precaution of Use: This product contains ProClin: a POISONOUS AND HAZARDOUS SUBSTANCE which should be handled by trained staff only.

Storage: -20 °C,-80 °C

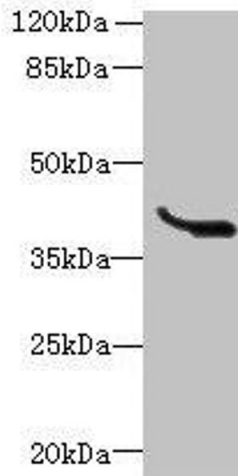
Storage Comment: Upon receipt, store at -20°C or -80°C. Avoid repeated freeze.

Images



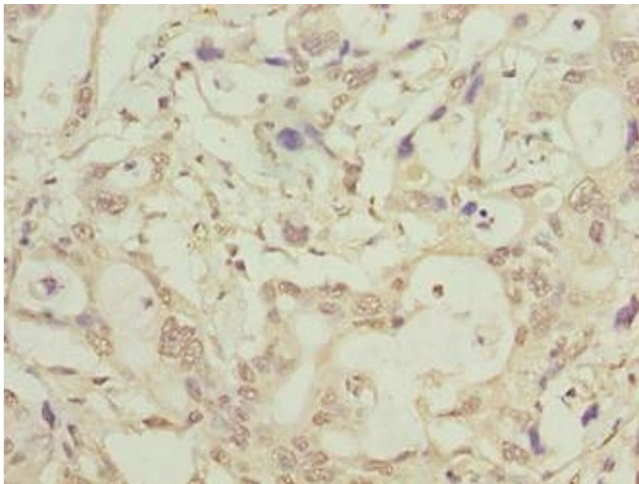
Immunofluorescence

Image 1. Immunofluorescence staining of HeLa cells with ABIN7158058 at 1:13, counter-stained with DAPI. The cells were fixed in 4 % formaldehyde, permeabilized using 0.2 % Triton X-100 and blocked in 10 % normal Goat Serum. The cells were then incubated with the antibody overnight at 4 °C. The secondary antibody was Alexa Fluor 488-conjugated AffiniPure Goat Anti-Rabbit IgG(H+L).



Western Blotting

Image 2. Western blot All lanes: LRTM1 antibody at 0.4 μ g/mL + K562 whole cell lysate Secondary Goat polyclonal to rabbit IgG at 1/10000 dilution Predicted band size: 39, 30 kDa Observed band size: 39 kDa



Immunohistochemistry

Image 3. Immunohistochemistry of paraffin-embedded human pancreatic cancer using ABIN7158058 at dilution of 1:100