

Datasheet for ABIN7158062
anti-LRTM2 antibody (AA 36-310)

4 Images

[Go to Product page](#)

Overview

Quantity:	100 µL
Target:	LRTM2
Binding Specificity:	AA 36-310
Reactivity:	Human
Host:	Rabbit
Clonality:	Polyclonal
Application:	Western Blotting (WB), Immunofluorescence (IF), Immunohistochemistry (IHC), ELISA

Product Details

Immunogen:	Recombinant Human Leucine-rich repeat and transmembrane domain-containing protein 2 protein (36-310AA)
Isotype:	IgG
Cross-Reactivity:	Human, Rat
Purification:	>95%, Protein G purified

Target Details

Target:	LRTM2
Alternative Name:	LRTM2 (LRTM2 Products)
Background:	Background: cytoplasm, protein kinase inhibitor activity, cytokine-mediated signaling pathway, negative regulation of JAK-STAT cascade, negative regulation of protein kinase activity. Aliases: Leucine-rich repeat and transmembrane domain-containing protein 2 antibody,

Target Details

Leucine-rich repeats and transmembrane domains 2 antibody, Lrtm2 antibody, LRTM2_HUMAN antibody

UniProt: [Q8N967](#)

Application Details

Application Notes: Recommended dilution: WB:1:1000-1:5000, IHC:1:20-1:200, IF:1:50-1:200,

Restrictions: For Research Use only

Handling

Format: Liquid

Buffer: Preservative: 0.03 % Proclin 300
Constituents: 50 % Glycerol, 0.01M PBS, pH 7.4

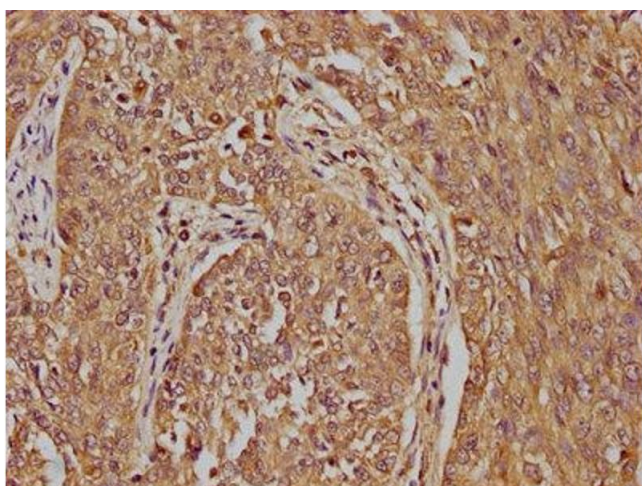
Preservative: ProClin

Precaution of Use: This product contains ProClin: a POISONOUS AND HAZARDOUS SUBSTANCE which should be handled by trained staff only.

Storage: -20 °C,-80 °C

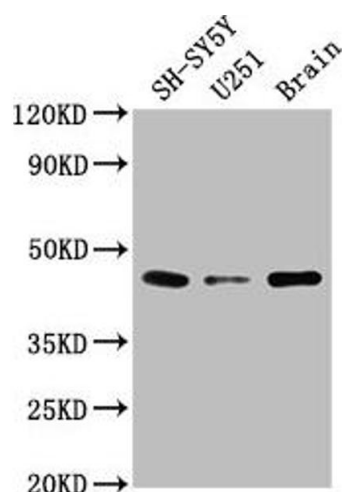
Storage Comment: Upon receipt, store at -20°C or -80°C. Avoid repeated freeze.

Images



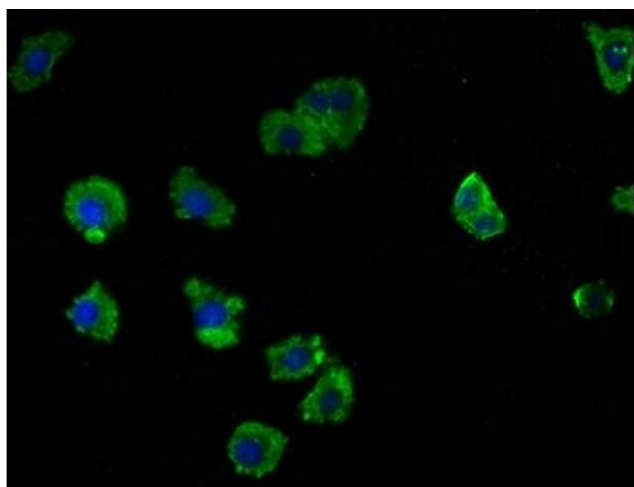
Immunohistochemistry

Image 1. IHC image of ABIN7158062 diluted at 1:100 and staining in paraffin-embedded human cervical cancer performed on a Leica Bond™ system. After dewaxing and hydration, antigen retrieval was mediated by high pressure in a citrate buffer (pH 6.0). Section was blocked with 10% normal goat serum 30min at RT. Then primary antibody (1% BSA) was incubated at 4°C overnight. The primary is detected by a biotinylated secondary antibody and visualized using an HRP conjugated SP system.



Western Blotting

Image 2. Western Blot Positive WB detected in: SH-SY5Y whole cell lysate, U251 whole cell lysate, Rat brain tissue All lanes: LRTM2 antibody at 1:2000 Secondary Goat polyclonal to rabbit IgG at 1/50000 dilution Predicted band size: 42 kDa Observed band size: 42 kDa



Immunofluorescence

Image 3. Immunofluorescence staining of HepG2 cells with ABIN7158062 at 1:100, counter-stained with DAPI. The cells were fixed in 4% formaldehyde, permeabilized using 0.2% Triton X-100 and blocked in 10% normal Goat Serum. The cells were then incubated with the antibody overnight at 4°C. The secondary antibody was Alexa Fluor 488-conjugated AffiniPure Goat Anti-Rabbit IgG(H+L).

Please check the [product details page](#) for more images. Overall 4 images are available for ABIN7158062.